

For Research Use Only

# LYN Monoclonal antibody, PBS Only

Catalog Number: 60211-1-PBS



## Basic Information

<b>Catalog Number:</b> 60211-1-PBS	<b>GenBank Accession Number:</b> BC075002	<b>Purification Method:</b> Protein A purification
<b>Size:</b> 100ug , Concentration: 1mg/ml by Nanodrop;	<b>GeneID (NCBI):</b> 4067	<b>CloneNo.:</b> 3C7F2
<b>Source:</b> Mouse	<b>UNIPROT ID:</b> P07948	
<b>Isotype:</b> IgG2a	<b>Full Name:</b> v-src-1 Yamaguchi sarcoma viral related oncogene homolog	
<b>Immunogen Catalog Number:</b> AG12723	<b>Calculated MW:</b> 512 aa, 59 kDa	
	<b>Observed MW:</b> 56 kDa	

## Applications

**Tested Applications:**  
WB, IF, IHC, Indirect ELISA

**Species Specificity:**  
human, mouse

## Background Information

LYN, also named as JTK8, p53Lyn and p56Lyn, belongs to the protein kinase superfamily, Tyr protein kinase family and SRC subfamily. It is a non-receptor tyrosine-protein kinase that transmits signals from cell surface receptors and plays an important role in the regulation of innate and adaptive immune responses, hematopoiesis, responses to growth factors and cytokines, integrin signaling, but also responses to DNA damage and genotoxic agents. LYN is a component of the mTOR (mammalian target of rapamycin) pathway.

## Storage

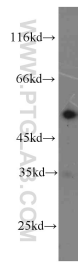
**Storage:**  
Store at -80°C.

**Storage Buffer:**  
PBS Only

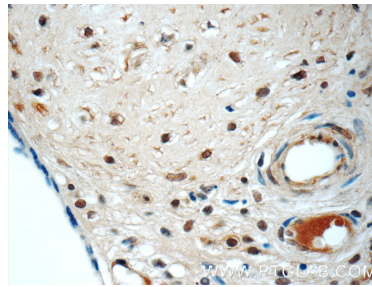
For technical support and original validation data for this product please contact:  
T: 1 (888) 4PTGLAB (1-888-478-4522) (toll free in USA), or 1(312) 455-8498 (outside USA)  
E: [proteintech@ptglab.com](mailto:proteintech@ptglab.com)  
W: [ptglab.com](http://ptglab.com)

This product is exclusively available under Proteintech Group brand and is not available to purchase from any other manufacturer.

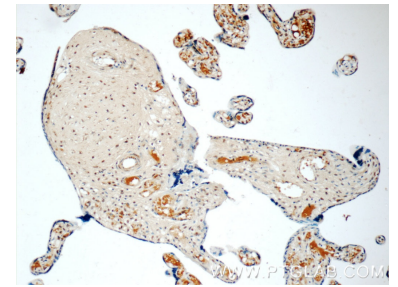
## Selected Validation Data



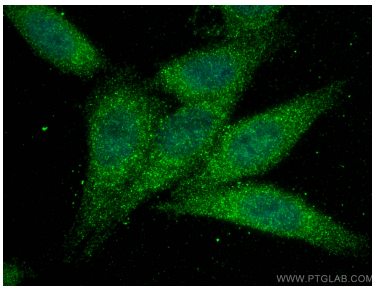
Jurkat cells were subjected to SDS PAGE followed by western blot with 60211-1-Ig (LYN antibody) at dilution of 1:1000 incubated at room temperature for 1.5 hours. This data was developed using the same antibody clone with 60211-1-PBS in a different storage buffer formulation.



Immunohistochemical analysis of paraffin-embedded human placenta tissue slide using 60211-1-Ig (LYN Antibody) at dilution of 1:50 (under 40x lens). This data was developed using the same antibody clone with 60211-1-PBS in a different storage buffer formulation.



Immunohistochemical analysis of paraffin-embedded human placenta tissue slide using 60211-1-Ig (LYN Antibody) at dilution of 1:50 (under 10x lens). This data was developed using the same antibody clone with 60211-1-PBS in a different storage buffer formulation.



Immunofluorescent analysis of (4% PFA) fixed HepG2 cells using LYN antibody (60211-1-Ig, Clone: 3C7F2 ) at dilution of 1:800 and CoraLite®488-Conjugated AffiniPure Goat Anti-Mouse IgG(H+L). This data was developed using the same antibody clone with 60211-1-PBS in a different storage buffer formulation.