

For Research Use Only

transgelin/SM22 Monoclonal antibody



Catalog Number: 60213-1-Ig **8 Publications**

Basic Information

Catalog Number: 60213-1-Ig	GenBank Accession Number: BC004927	Purification Method: Protein A purification
Size: 150ul , Concentration: 700 µg/ml by Bradford method using BSA as the standard;	GeneID (NCBI): 6876	CloneNo.: 2A10C2
Source: Mouse	Full Name: transgelin	Recommended Dilutions: WB 1:1000-1:8000 IHC 1:50-1:400 IF 1:50-1:500
Isotype: IgG1	Calculated MW: 22 kDa	
Immunogen Catalog Number: AG0764	Observed MW: 18+22 kDa	

Applications

Tested Applications:

IF, IHC, WB, ELISA

Cited Applications:

FC, IF, WB

Species Specificity:

human, rat, pig, mouse

Cited Species:

human, mouse, rat

Note-IHC: suggested antigen retrieval with TE buffer pH 9.0; (*) Alternatively, antigen retrieval may be performed with citrate buffer pH 6.0

Positive Controls:

WB : human colon tissue, human stomach tissue, pig stomach tissue, rat colon tissue, rat stomach tissue

IHC : human colon tissue, human heart tissue

IF : mouse heart tissue,

Background Information

The transgelin family is a group of proteins that belong to 22 kDa actin-related corpnin superfamily. Of all three isoforms, transgelin 1 is the best characterized. Transgelin 1, also known as SM22 alpha, is a specific marker for differentiated smooth muscle cells. Transgelin 2, also known as SM22 beta, is expressed by both smooth muscle and non-smooth muscle cells in a temporally and spatially regulated pattern. Transgelin 3, also known as NP25, is only found in highly differentiated neuronal cells.

Notable Publications

Author	Pubmed ID	Journal	Application
Ji-Ting Liu	34604241	Front Cell Dev Biol	WB
Sarah Lang	29152087	Oncotarget	WB
Bao-Ying Luo	35643386	Biochim Biophys Acta Mol Basis Dis	IF

Storage

Storage:

Store at -20°C. Stable for one year after shipment.

Storage Buffer:

PBS with 0.02% sodium azide and 50% glycerol pH 7.3.

Aliquoting is unnecessary for -20°C storage

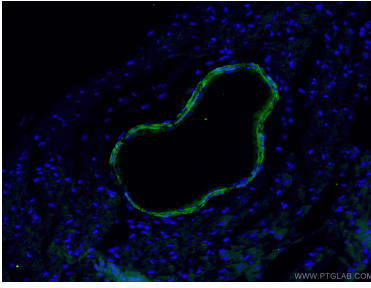
For technical support and original validation data for this product please contact:

T: 1 (888) 4PTGLAB (1-888-478-4522) (toll free in USA), or 1(312) 455-8498 (outside USA)

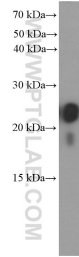
E: proteintech@ptglab.com
W: ptglab.com

This product is exclusively available under Proteintech Group brand and is not available to purchase from any other manufacturer.

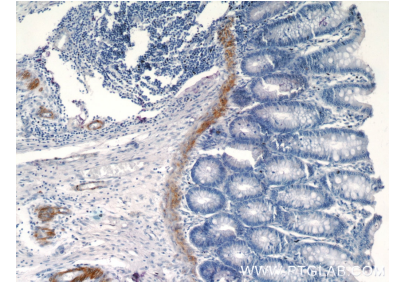
Selected Validation Data



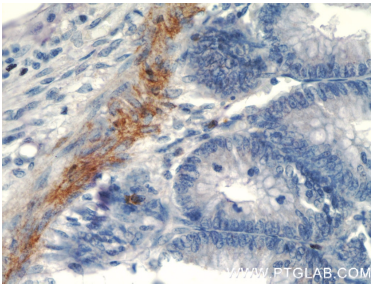
Immunofluorescent analysis of (4% PFA) fixed mouse heart tissue using 60213-1-Ig (transgelin/SM22 antibody) at dilution of 1:50 and Alexa Fluor 488-conjugated AffiniPure Goat Anti-Mouse IgG(H+L).



human colon tissue were subjected to SDS PAGE followed by western blot with 60213-1-Ig (transgelin/SM22 antibody at dilution of 1:4000 incubated at room temperature for 1.5 hours.



Immunohistochemical analysis of paraffin-embedded human colon tissue slide using 60213-1-Ig (transgelin/SM22 antibody at dilution of 1:200 (under 10x lens).



Immunohistochemical analysis of paraffin-embedded human colon tissue slide using 60213-1-Ig (transgelin/SM22 antibody at dilution of 1:200 (under 40x lens).