

For Research Use Only



transgelin/SM22 Monoclonal antibody, PBS Only

Catalog Number: 60213-1-PBS

Basic Information

Catalog Number: 60213-1-PBS	GenBank Accession Number: BC004927	Purification Method: Protein A purification
Size: 100ug , Concentration: 1mg/ml by Nanodrop;	GeneID (NCBI): 6876	CloneNo.: 2A10C2
Source: Mouse	UNIPROT ID: Q01995	
Isotype: IgG1	Full Name: transgelin	
Immunogen Catalog Number: AG0764	Calculated MW: 22 kDa	
	Observed MW: 18+22 kDa	

Applications

Tested Applications:
WB, IF, IHC, ELISA

Species Specificity:
human, rat, pig, mouse, mouse

Background Information

The transgelin family is a group of proteins that belong to 22 kDa actin-related corpnin superfamily. Of all three isoforms, transgelin 1 is the best characterized. Transgelin 1, also known as SM22 alpha, is a specific marker for differentiated smooth muscle cells. Transgelin 2, also known as SM22 beta, is expressed by both smooth muscle and non-smooth muscle cells in a temporally and spatially regulated pattern. Transgelin 3, also known as NP25, is only found in highly differentiated neuronal cells.

Storage

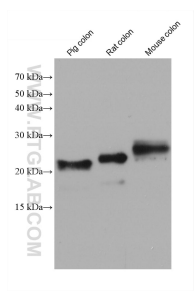
Storage:
Store at -80°C.

Storage Buffer:
PBS only

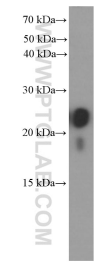
For technical support and original validation data for this product please contact:
T: 1 (888) 4PTGLAB (1-888-478-4522) (toll free in USA), or 1(312) 455-8498 (outside USA)
E: proteintech@ptglab.com
W: ptglab.com

This product is exclusively available under Proteintech Group brand and is not available to purchase from any other manufacturer.

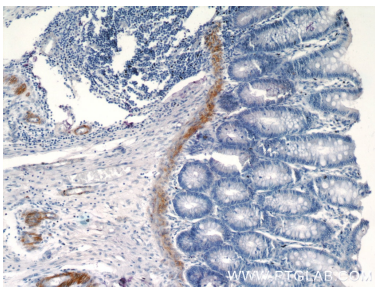
Selected Validation Data



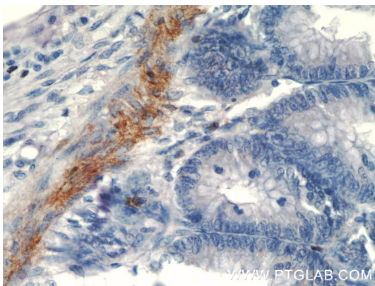
Various lysates were subjected to SDS PAGE followed by western blot with 60213-1-Ig (transgelin/SM22 antibody) at dilution of 1:20000 incubated at room temperature for 1.5 hours. This data was developed using the same antibody clone with 60213-1-PBS in a different storage buffer formulation.



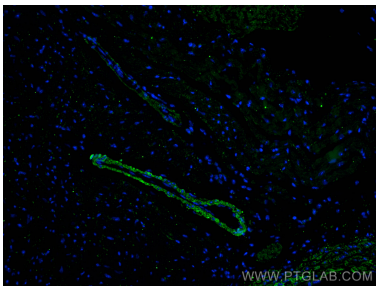
human colon tissue were subjected to SDS PAGE followed by western blot with 60213-1-Ig (transgelin/SM22 antibody at dilution of 1:4000 incubated at room temperature for 1.5 hours. This data was developed using the same antibody clone with 60213-1-PBS in a different storage buffer formulation.



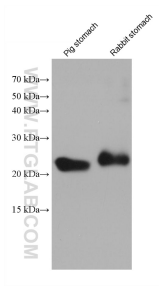
Immunohistochemical analysis of paraffin-embedded human colon tissue slide using 60213-1-Ig (transgelin/SM22 antibody at dilution of 1:200 (under 10x lens). This data was developed using the same antibody clone with 60213-1-PBS in a different storage buffer formulation.



Immunohistochemical analysis of paraffin-embedded human colon tissue slide using 60213-1-Ig (transgelin/SM22 antibody at dilution of 1:200 (under 40x lens). This data was developed using the same antibody clone with 60213-1-PBS in a different storage buffer formulation.



Immunofluorescent analysis of (4% PFA) fixed paraffin-embedded mouse heart tissue using transgelin/SM22 antibody (60213-1-Ig, Clone: 2A10C2) at dilution of 1:1000 and CoraLite®488-Conjugated AffiniPure Goat Anti-Mouse IgG(H+L). Heat mediated antigen retrieval with Tris-EDTA buffer (pH 9.0). This data was developed using the same antibody clone with 60213-1-PBS in a different storage buffer formulation.



Various lysates were subjected to SDS PAGE followed by western blot with 60213-1-Ig (transgelin/SM22 antibody) at dilution of 1:20000 incubated at room temperature for 1.5 hours. This data was developed using the same antibody clone with 60213-1-PBS in a different storage buffer formulation.