

For Research Use Only

# IFT88 Monoclonal antibody, PBS Only



Catalog Number: 60227-1-PBS

Featured Product

## Basic Information

### Catalog Number:

60227-1-PBS

### Size:

100ug, Concentration: 1 mg/ml by Nanodrop;

### Source:

Mouse

### Isotype:

IgG1

### Immunogen Catalog Number:

AG4980

### GenBank Accession Number:

BC030776

### GeneID (NCBI):

8100

### UNIPROT ID:

Q13099

### Full Name:

intraflagellar transport 88 homolog (Chlamydomonas)

### Calculated MW:

94 kDa

### Observed MW:

88-95 kDa

### Purification Method:

Protein A purification

### CloneNo.:

4A4G5

## Applications

### Tested Applications:

WB, IP, IHC, Indirect ELISA

### Species Specificity:

human, mouse, rat

## Background Information

Intraflagellar transport (IFT), mediated by molecular motors and IFT particles, is an important transport process that occurs in the cilium and has been shown to be essential for the assembly and maintenance of cilia and flagella in many organisms. IFT88 (intraflagellar transport protein 88; also known as TG737 or TTC10) is a component of IFT particles and required for cilium biogenesis. Defects in IFT88/TG737 lead to polycystic kidney disease (11062270). IFT88 localizes to spindle poles during mitosis and is required for spindle orientation in mitosis (21441926). This antibody was raised against the C-terminal region of human IFT88 and can detect the endogenous level of IFT88.

## Storage

### Storage:

Store at -80°C.

### Storage Buffer:

PBS Only

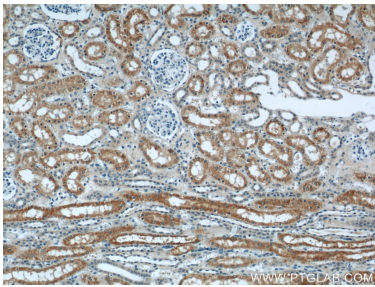
For technical support and original validation data for this product please contact:

T: 1 (888) 4PTGLAB (1-888-478-4522) (toll free in USA), or 1(312) 455-8498 (outside USA)

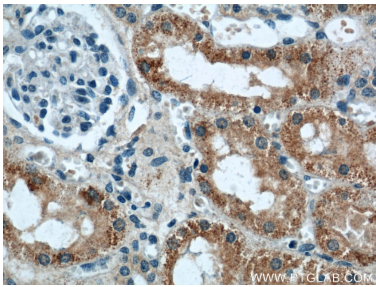
E: [proteintech@ptglab.com](mailto:proteintech@ptglab.com)  
W: [ptglab.com](http://ptglab.com)

This product is exclusively available under Proteintech Group brand and is not available to purchase from any other manufacturer.

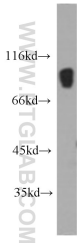
Selected Validation Data



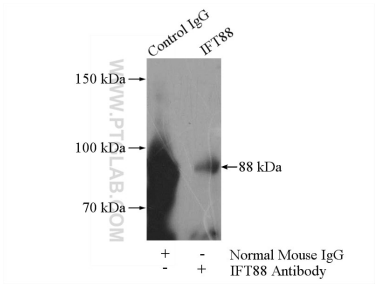
Immunohistochemical analysis of paraffin-embedded human kidney using 60227-1-Ig (IFT88 antibody) at dilution of 1:50 (under 10x lens). This data was developed using the same antibody clone with 60227-1-PBS in a different storage buffer formulation.



Immunohistochemical analysis of paraffin-embedded human kidney using 60227-1-Ig (IFT88 antibody) at dilution of 1:50 (under 40x lens). This data was developed using the same antibody clone with 60227-1-PBS in a different storage buffer formulation.



human testis tissue were subjected to SDS PAGE followed by western blot with 60227-1-Ig (IFT88 antibody) at dilution of 1:1000 incubated at room temperature for 1.5 hours. This data was developed using the same antibody clone with 60227-1-PBS in a different storage buffer formulation.



IP result of anti-IFT88 (IP: 60227-1-Ig, 5ug; Detection: 60227-1-Ig 1:800) with PC-3 cells lysate 1040ug. This data was developed using the same antibody clone with 60227-1-PBS in a different storage buffer formulation.