

For Research Use Only

# Myosin Light Chain 2/MLC-2V Monoclonal antibody

Catalog Number: 60229-1-Ig **3 Publications**



## Basic Information

<b>Catalog Number:</b> 60229-1-Ig	<b>GenBank Accession Number:</b> BC015821	<b>Purification Method:</b> Protein A purification
<b>Size:</b> 150ul , Concentration: 1500 ug/ml by Nanodrop;	<b>GeneID (NCBI):</b> 4633	<b>CloneNo.:</b> 5A1F1
<b>Source:</b> Mouse	<b>UNIPROT ID:</b> P10916	<b>Recommended Dilutions:</b> WB 1:5000-1:50000 IHC 1:500-1:2000 IF/ICC 1:400-1:1600
<b>Isotype:</b> IgG1	<b>Full Name:</b> myosin, light chain 2, regulatory, cardiac, slow	
<b>Immunogen Catalog Number:</b> AG1356	<b>Calculated MW:</b> 19 kDa	
	<b>Observed MW:</b> 18 kDa	

## Applications

<b>Tested Applications:</b> WB, IHC, IF/ICC, ELISA	<b>Positive Controls:</b>
<b>Cited Applications:</b> WB, IF	<b>WB :</b> human heart tissue, pig heart tissue, rat heart tissue, rabbit heart tissue
<b>Species Specificity:</b> human, mouse, rat, pig, rabbit	<b>IHC :</b> mouse heart tissue, human heart tissue, mouse skeletal muscle tissue
<b>Cited Species:</b> human, rat	<b>IF/ICC :</b> C2C12 cells,
<b>Note-IHC: suggested antigen retrieval with TE buffer pH 9.0; (*) Alternatively, antigen retrieval may be performed with citrate buffer pH 6.0</b>	

## Background Information

MYL2, also named as MLC-2v and MLC-2, is ventricular/cardiac muscle isoform. Defects in MYL2 are the cause of cardiomyopathy familial hypertrophic type 10 (CMH10). Defects in MYL2 are the cause of cardiomyopathy familial hypertrophic with mid-left ventricular chamber type 2 (MVC2). MYL2 has been widely used as a marker of mature ventricular cardiomyocytes.

## Notable Publications

Author	Pubmed ID	Journal	Application
Xiangyu Zhang	35246800	Stem Cell Rev Rep	IF
Jingcheng Wang	36042011	Int J Stem Cells	WB
Y Wang	26269433	Stem Cells	IF

## Storage

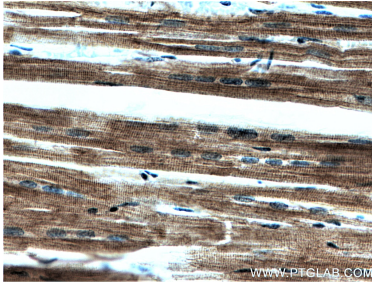
**Storage:**  
Store at -20°C. Stable for one year after shipment.  
**Storage Buffer:**  
PBS with 0.02% sodium azide and 50% glycerol pH 7.3.  
Aliquoting is unnecessary for -20°C storage

\*\*\* 20ul sizes contain 0.1% BSA

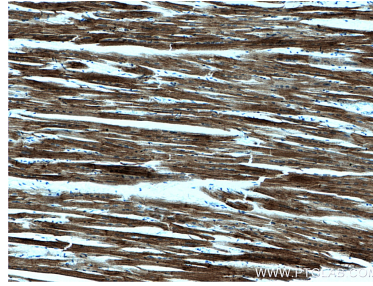
For technical support and original validation data for this product please contact:  
T: 1 (888) 4PTGLAB (1-888-478-4522) (toll free in USA), or 1(312) 455-8498 (outside USA)  
E: proteintech@ptglab.com  
W: ptglab.com

This product is exclusively available under Proteintech Group brand and is not available to purchase from any other manufacturer.

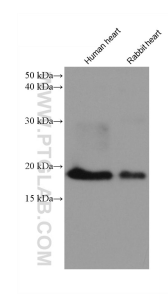
## Selected Validation Data



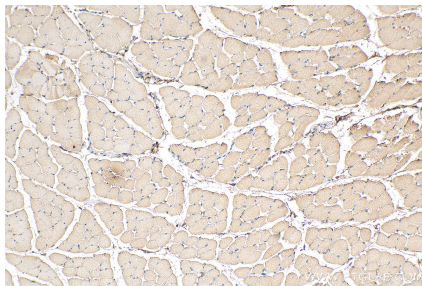
Immunohistochemical analysis of paraffin-embedded human heart tissue slide using 60229-1-Ig (Myosin Light Chain 2 antibody) at dilution of 1:500 (under 0x lens).



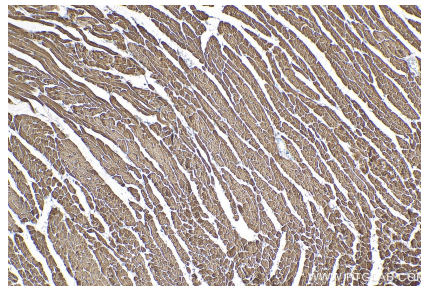
Immunohistochemical analysis of paraffin-embedded human heart tissue slide using 60229-1-Ig (Myosin Light Chain 2 antibody) at dilution of 1:500 (under 0x lens).



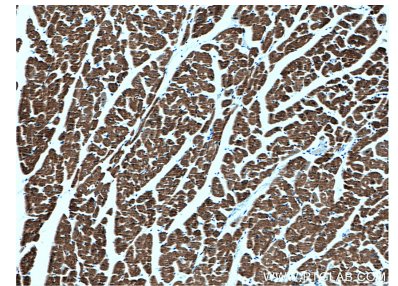
Various lysates were subjected to SDS PAGE followed by western blot with 60229-1-Ig (Myosin Light Chain 2/MLC-2V antibody) at dilution of 1:10000 incubated at room temperature for 1.5 hours.



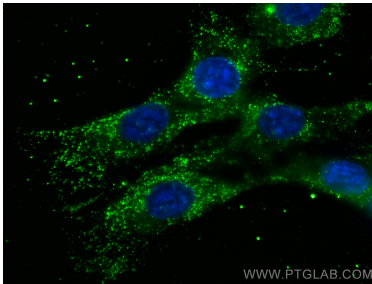
Immunohistochemical analysis of paraffin-embedded mouse skeletal muscle tissue slide using 60229-1-Ig (Myosin Light Chain 2/MLC-2V antibody) at dilution of 1:1000 (under 10x lens). Heat mediated antigen retrieval with Tris-EDTA buffer (pH 9.0).



Immunohistochemical analysis of paraffin-embedded mouse heart tissue slide using 60229-1-Ig (Myosin Light Chain 2/MLC-2V antibody) at dilution of 1:1000 (under 10x lens). Heat mediated antigen retrieval with Tris-EDTA buffer (pH 9.0).



Immunohistochemical analysis of paraffin-embedded human heart tissue slide using 60229-1-Ig (Myosin Light Chain 2 antibody) at dilution of 1:500 (under 10x lens).



Immunofluorescent analysis of (-20°C Methanol) fixed C2C12 cells using Myosin Light Chain 2/MLC-2V antibody (60229-1-Ig, Clone: 5A1F1) at dilution of 1:800 and CoraLite®488-Conjugated AffiniPure Goat Anti-Mouse IgG(H+L).