

Cytokeratin 15 Monoclonal antibody, PBS Only (Capture)

Catalog Number: 60247-1-PBS

Basic Information

Catalog Number: 60247-1-PBS	GenBank Accession Number: BC002641	Purification Method: Protein A purification
Size: 100ug , Concentration: 1mg/ml by Nanodrop;	GeneID (NCBI): 3866	CloneNo.: 6B4F8
Source: Mouse	UNIPROT ID: P19012	
Isotype: IgG1	Full Name: keratin 15	
Immunogen Catalog Number: AG0185	Calculated MW: 49 kDa	
	Observed MW: 49 kDa	

Applications

Tested Applications:
WB, IF, IHC, Sandwich ELISA, Indirect ELISA,
Cytometric bead array

Species Specificity:
human, mouse

Product Information

60247-1-PBS targets Cytokeratin 15 as part of a matched antibody pair:

MP50002-1: 60247-1-PBS capture and 60247-2-PBS detection (validated in Sandwich ELISA)

Unconjugated mouse monoclonal antibody pair in PBS only (BSA and azide free) storage buffer at a concentration of 1 mg/mL, ready for conjugation.

This conjugation ready format makes antibodies ideal for use in many applications including: ELISAs, multiplex assays requiring matched pairs, mass cytometry, and multiplex imaging applications. Antibody use should be optimized by the end user for each application and assay.

Background Information

Keratins are a large family of proteins that form the intermediate filament cytoskeleton of epithelial cells. Keratin expression is highly regulated, tissue specific, and varies according to cell-state. Type I keratins consist of acidic, low molecular weight proteins with MW ranging from 40 kDa (KRT19) to 64 kDa (KRT9). Type 2 keratins consist of basic or neutral, high molecular weight proteins with MW from 52 kDa (KRT8) to 67 kDa (KRT18). Keratin 15 is a type I cytokeratin. It is found in some progenitor basal cells within complex epithelia.

Storage

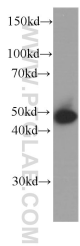
Storage:
Store at -80°C.

Storage Buffer:
100% PBS pH 7.3

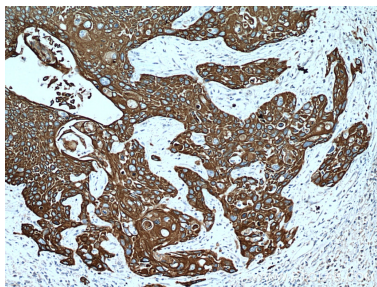
For technical support and original validation data for this product please contact:
T: 1 (888) 4PTGLAB (1-888-478-4522) (toll free in USA), or 1(312) 455-8498 (outside USA)
E: proteintech@ptglab.com
W: ptglab.com

This product is exclusively available under Proteintech Group brand and is not available to purchase from any other manufacturer.

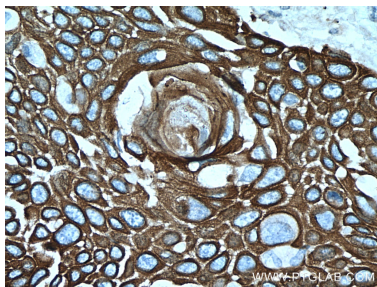
Selected Validation Data



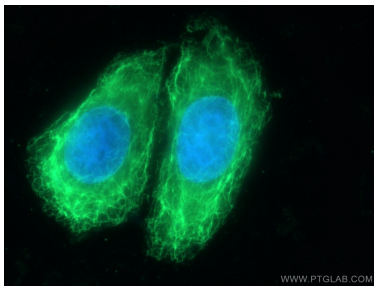
A431 cells were subjected to SDS PAGE followed by western blot with 60247-1-Ig (Cytokeratin 15 antibody) at dilution of 1:1000 incubated at room temperature for 1.5 hours. This data was developed using the same antibody clone with 60247-1-PBS in a different storage buffer formulation.



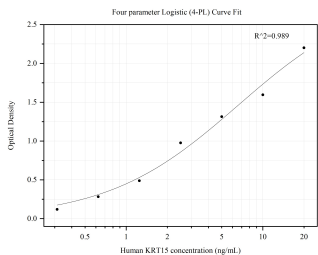
Immunohistochemical analysis of paraffin-embedded human oesophagus cancer tissue slide using 60247-1-Ig (Cytokeratin 15 antibody at dilution of 1:500 (under 10x lens). This data was developed using the same antibody clone with 60247-1-PBS in a different storage buffer formulation.



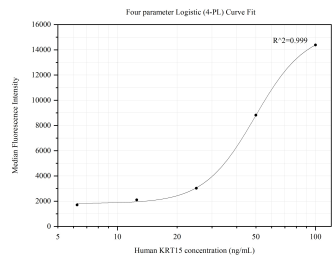
Immunohistochemical analysis of paraffin-embedded human oesophagus cancer tissue slide using 60247-1-Ig (Cytokeratin 15 antibody at dilution of 1:500 (under 40x lens). This data was developed using the same antibody clone with 60247-1-PBS in a different storage buffer formulation.



Immunofluorescent analysis of (-20°C Ethanol) fixed HeLa cells using Cytokeratin 15 antibody (60247-1-Ig, Clone: 6B4F8) at dilution of 1:25 and CoraLite488-Conjugated AffiniPure Goat Anti-Mouse IgG(H+L). This data was developed using the same antibody clone with 60247-1-PBS in a different storage buffer formulation.



Sandwich ELISA standard curve ofMP50002-1, KRT15 Monoclonal Matched Antibody Pair, PBS Only. Capture antibody: 60247-1-PBS. Detection antibody: HRP-conjugated 60247-2-PBS. Standard: Ag0185. Range: 0.313-20 ng/mL



Cytometric bead array standard curve ofMP50002-1, KRT15 Monoclonal Matched Antibody Pair, PBS Only. Capture antibody: 60247-1-PBS. Detection antibody: 60247-2-PBS. Standard: Ag0185. Range: 1.563-100 ng/mL