

For Research Use Only

HADHA Monoclonal antibody, PBS Only (Capture)

Catalog Number: 60250-1-PBS

Featured Product



Basic Information

Catalog Number:

60250-1-PBS

Size:

100ug, Concentration: 1mg/ml by Nanodrop;

Source:

Mouse

Isotype:

IgG1

Immunogen Catalog Number:

AG1211

GenBank Accession Number:

BC009235

GeneID (NCBI):

3030

UNIPROT ID:

P40939

Full Name:

hydroxyacyl-Coenzyme A dehydrogenase/3-ketoacyl-Coenzyme A thiolase/enoyl-Coenzyme A hydratase (trifunctional protein), alpha subunit

Calculated MW:

83 kDa

Observed MW:

79 kDa

Purification Method:

Protein G purification

CloneNo.:

3E9B1

Applications

Tested Applications:

WB, IHC, IF/ICC, Cytometric bead array, Indirect ELISA

Species Specificity:

human, mouse, rat

Product Information

60250-1-PBS targets HADHA as part of a matched antibody pair:

MP50412-1: 60250-1-PBS capture and 60250-2-PBS detection (validated in Cytometric bead array)

Unconjugated mouse monoclonal antibody pair in PBS only (BSA and azide free) storage buffer at a concentration of 1 mg/mL, ready for conjugation.

This conjugation ready format makes antibodies ideal for use in many applications including: ELISAs, multiplex assays requiring matched pairs, mass cytometry, and multiplex imaging applications. Antibody use should be optimized by the end user for each application and assay.

Background Information

HADHA (Trifunctional enzyme subunit alpha, mitochondrial) is also named as HADH, 78 kDa gastrin-binding protein. It belongs to the enoyl-CoA hydratase/isomerase family in the N-terminal section and the 3-hydroxyacyl-CoA dehydrogenase family in the central section. It harbors the 3-hydroxyacyl-CoA dehydrogenase and enoyl-CoA hydratase activities. Defects in HADHA are a cause of trifunctional protein deficiency (TFP deficiency) and long-chain 3-hydroxyacyl-CoA dehydrogenase deficiency (LCHAD deficiency) and maternal acute fatty liver of pregnancy (AFLP).

Storage

Storage:

Store at -80°C.

Storage Buffer:

PBS Only

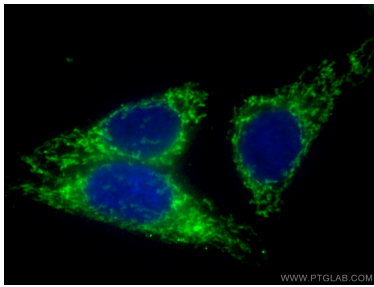
For technical support and original validation data for this product please contact:

T: 1 (888) 4PTGLAB (1-888-478-4522) (toll free in USA), or 1(312) 455-8498 (outside USA)

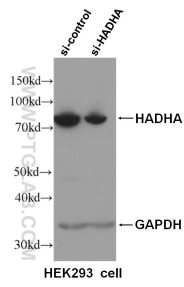
E: proteintech@ptglab.com
W: ptglab.com

This product is exclusively available under Proteintech Group brand and is not available to purchase from any other manufacturer.

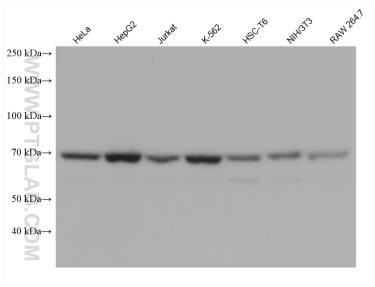
Selected Validation Data



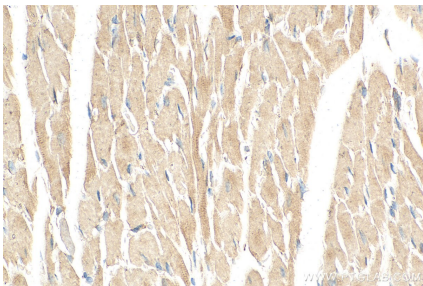
Immunofluorescent analysis of (4% PFA) fixed HepG2 cells using 60250-1-Ig (HADHA antibody) at dilution of 1:100 and CoraLite488-Conjugated AffiniPure Goat Anti-Mouse IgG(H+L). This data was developed using the same antibody clone with 60250-1-PBS in a different storage buffer formulation.



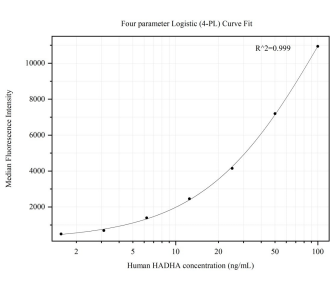
WB result of HADHA specific antibody (60250-1-Ig, 1:4000) with si-control and si-HADHA transfected HEK293 cells. This data was developed using the same antibody clone with 60250-1-PBS in a different storage buffer formulation.



Various lysates were subjected to SDS PAGE followed by western blot with 60250-1-Ig (HADHA antibody) at dilution of 1:10000 incubated at room temperature for 1.5 hours. This data was developed using the same antibody clone with 60250-1-PBS in a different storage buffer formulation.



Immunohistochemical analysis of paraffin-embedded mouse heart tissue slide using 60250-1-Ig (HADHA antibody) at dilution of 1:500 (under 40x lens). Heat mediated antigen retrieval with Tris-EDTA buffer (pH 9.0). This data was developed using the same antibody clone with 60250-1-PBS in a different storage buffer formulation.



Cytometric bead array standard curve of MP50412-1, HADHA Monoclonal Matched Antibody Pair, PBS Only. Capture antibody: 60250-1-PBS. Detection antibody: 60250-2-PBS. Standard:Ag1211. Range: 1.563-100 ng/mL.