

For Research Use Only

# MAPK13 Monoclonal antibody

Catalog Number: 60252-1-Ig **Featured Product**



## Basic Information

<b>Catalog Number:</b> 60252-1-Ig	<b>GenBank Accession Number:</b> BC000433	<b>Purification Method:</b> Protein G purification
<b>Size:</b> 150ul , Concentration: 1300 µg/ml by Nanodrop and 1000 µg/ml by Bradford method using BSA as the standard;	<b>GeneID (NCBI):</b> 5603	<b>CloneNo.:</b> 1B12A6
<b>Source:</b> Mouse	<b>Full Name:</b> mitogen-activated protein kinase 13	<b>Recommended Dilutions:</b> WB 1:1000-1:6000 IHC 1:150-1:600
<b>Isotype:</b> IgG1	<b>Calculated MW:</b> 38 kDa	
<b>Immunogen Catalog Number:</b> AG21240	<b>Observed MW:</b> 38-42 kDa	

## Applications

<b>Tested Applications:</b> IHC, WB, ELISA	<b>Positive Controls:</b>
<b>Species Specificity:</b> human	<b>WB :</b> Ramos cells, HepG2 cells, Daudi cells, HEK-293 cells
<b>Note-IHC: suggested antigen retrieval with TE buffer pH 9.0; (*) Alternatively, antigen retrieval may be performed with citrate buffer pH 6.0</b>	<b>IHC :</b> human pancreas cancer tissue,

## Background Information

MAPK13 (Mitogen-activated protein kinase 13) is also named as PRKM13, SAPK4 and belongs to the protein kinase superfamily. MAPK13 is one of the four p38 MAPKs which play an important role in the cascades of cellular responses evoked by extracellular stimuli such as proinflammatory cytokines or physical stress leading to direct activation of transcription factors such as ELK1 and ATF2.

## Storage

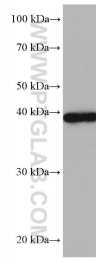
**Storage:**  
Store at -20°C. Stable for one year after shipment.  
**Storage Buffer:**  
PBS with 0.02% sodium azide and 50% glycerol pH 7.3.  
Aliquoting is unnecessary for -20°C storage

\*\*\* 20ul sizes contain 0.1% BSA

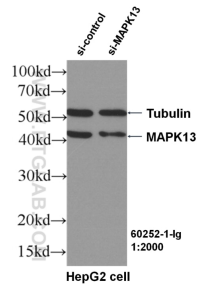
For technical support and original validation data for this product please contact:  
T: 1 (888) 4PTGLAB (1-888-478-4522) (toll free in USA), or 1(312) 455-8498 (outside USA)  
E: proteintech@ptglab.com  
W: ptglab.com

This product is exclusively available under Proteintech Group brand and is not available to purchase from any other manufacturer.

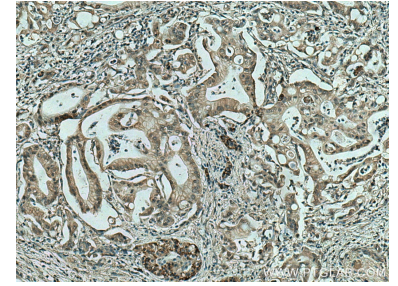
## Selected Validation Data



Ramos cells were subjected to SDS PAGE followed by western blot with 60252-1-Ig (MAPK13 antibody) at dilution of 1:3000 incubated at room temperature for 1.5 hours.



WB result of MAPK13 antibody (60252-1-Ig, 1:2000) with si-Control and si-MAPK13 transfected HepG2 cells.



Immunohistochemical analysis of paraffin-embedded human pancreas cancer tissue slide using 60252-1-Ig (MAPK13 antibody) at dilution of 1:300 (under 10x lens). Heat mediated antigen retrieval with Tris-EDTA buffer (pH 9.0).