

For Research Use Only

CD14 Monoclonal antibody, PBS Only (Capture)

Catalog Number: 60253-1-PBS



Basic Information

Catalog Number: 60253-1-PBS	GenBank Accession Number: BC010507	Purification Method: Protein G purification
Size: 100ug , Concentration: 1mg/ml by Nanodrop;	GeneID (NCBI): 929	CloneNo.: 2C1D9
Source: Mouse	ENSEMBL Gene ID: ENSG00000170458	
Isotype: IgG1	UNIPROT ID: P08571	
Immunogen Catalog Number: AG10693	Full Name: CD14 molecule	
	Calculated MW: 375 aa, 40 kDa	
	Observed MW: 45-55 kDa	

Applications

Tested Applications:
WB, IHC, IF/ICC, IF-P, Cytometric bead array, Indirect ELISA

Species Specificity:
human, mouse

Product Information

60253-1-PBS targets CD14 as part of a matched antibody pair:

MP50282-2: 60253-1-PBS capture and 60253-2-PBS detection (validated in Cytometric bead array)

Unconjugated mouse monoclonal antibody pair in PBS only (BSA and azide free) storage buffer at a concentration of 1 mg/mL, ready for conjugation.

This conjugation ready format makes antibodies ideal for use in many applications including: ELISAs, multiplex assays requiring matched pairs, mass cytometry, and multiplex imaging applications. Antibody use should be optimized by the end user for each application and assay.

Background Information

CD14 is a 50-55 kDa glycosylphosphatidylinositol-anchored glycoprotein preferentially expressed on monocytes and macrophages, and at lower levels on granulocytes (PMID: 3385210; 2462937; 7685797). CD14 can also exist as a soluble protein. CD14 acts as a co-receptor for bacterial liposaccharides (LPS) (PMID: 1698311). It plays a major role in the inflammatory response of monocytes to LPS.

Storage

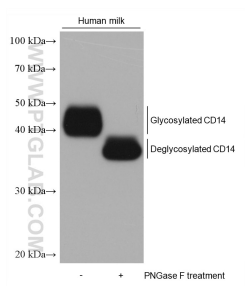
Storage:
Store at -80°C.

Storage Buffer:
PBS Only

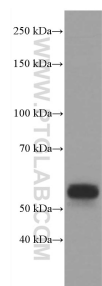
For technical support and original validation data for this product please contact:
T: 1 (888) 4PTGLAB (1-888-478-4522) (toll free in USA), or 1(312) 455-8498 (outside USA)
E: proteintech@ptglab.com
W: ptglab.com

This product is exclusively available under Proteintech Group brand and is not available to purchase from any other manufacturer.

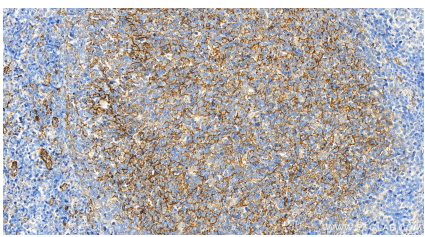
Selected Validation Data



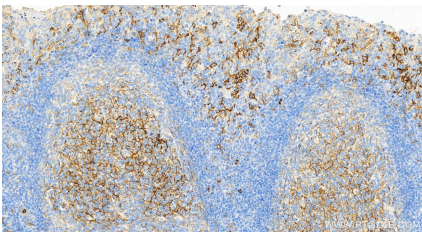
Untreated and PNGase F-treated lysates of human milk were subjected to SDS PAGE followed by western blot with 60253-1-Ig (CD14 antibody) at dilution of 1:10000 incubated at room temperature for 1.5 hours. This data was developed using the same antibody clone with 60253-1-PBS in a different storage buffer formulation.



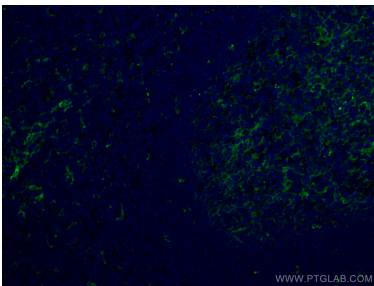
THP-1 cells were subjected to SDS PAGE followed by western blot with 60253-1-Ig (CD14 antibody) at dilution of 1:2000 incubated at room temperature for 1.5 hours. This data was developed using the same antibody clone with 60253-1-PBS in a different storage buffer formulation.



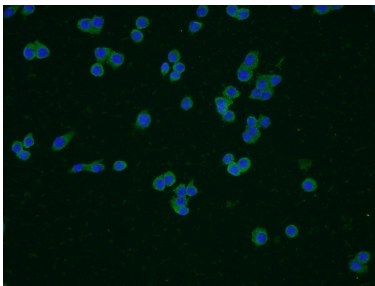
Immunohistochemical analysis of paraffin-embedded human tonsillitis tissue slide using 60253-1-Ig (CD14 antibody) at dilution of 1:2000 (under 20x lens). Heat mediated antigen retrieval with Tris-EDTA buffer (pH 9.0). This data was developed using the same antibody clone with 60253-1-PBS in a different storage buffer formulation.



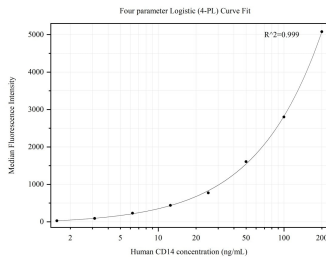
Immunohistochemical analysis of paraffin-embedded human tonsillitis tissue slide using 60253-1-Ig (CD14 antibody) at dilution of 1:2000 (under 20x lens). Heat mediated antigen retrieval with Tris-EDTA buffer (pH 9.0). This data was developed using the same antibody clone with 60253-1-PBS in a different storage buffer formulation.



Immunofluorescent analysis of (4% PFA) fixed human tonsillitis tissue using CD14 antibody (60253-1-Ig, Clone: 2C1D9) at dilution of 1:200 and CoraLite® 488-Conjugated AffiniPure Goat Anti-Mouse IgG(H+L). This data was developed using the same antibody clone with 60253-1-PBS in a different storage buffer formulation.



Immunofluorescent analysis of RAW 264.7 cells using 60253-1-Ig (CD14 antibody) at dilution of 1:50 and Alexa Fluor 488-conjugated AffiniPure Goat Anti-Mouse IgG(H+L). This data was developed using the same antibody clone with 60253-1-PBS in a different storage buffer formulation.



Cytometric bead array standard curve of MP50282-2, CD14 Monoclonal Matched Antibody Pair, PBS Only. Capture antibody: 60253-1-PBS. Detection antibody: 60253-2-PBS. Standard:Ag10693. Range: 1.563-200 ng/mL.