

For Research Use Only

# IGBP1 Monoclonal antibody

Catalog Number: 60256-1-Ig



## Basic Information

<b>Catalog Number:</b> 60256-1-Ig	<b>GenBank Accession Number:</b> BC004137	<b>Purification Method:</b> Protein G purification
<b>Size:</b> 150ul , Concentration: 1800 µg/ml by Nanodrop and 1100 µg/ml by Bradford method using BSA as the standard;	<b>GeneID (NCBI):</b> 3476	<b>CloneNo.:</b> 2D11A8
<b>Source:</b> Mouse	<b>Full Name:</b> immunoglobulin (CD79A) binding protein 1	<b>Recommended Dilutions:</b> WB 1:500-1:2000 IHC 1:50-1:500
<b>Isotype:</b> IgG1	<b>Calculated MW:</b> 39 kDa	
<b>Immunogen Catalog Number:</b> AG6782	<b>Observed MW:</b> 40 kDa	

## Applications

### Tested Applications:

IHC, WB, ELISA

### Species Specificity:

human, mouse

**Note-IHC: suggested antigen retrieval with  
TE buffer pH 9.0; (\*) Alternatively, antigen  
retrieval may be performed with citrate  
buffer pH 6.0**

### Positive Controls:

WB : K-562 cells,

IHC : human heart tissue, human skeletal muscle  
tissue

## Background Information

Immunoglobulin-binding protein 1 (IGBP1), also known as ALPHA-4, was originally identified as a signal transduction molecule coprecipitating with MB1 (CD79a) protein of the B-cell antigen receptor (BCR) complex. IGBP1 has been characterized as an essential regulator of the catalytic activity of protein phosphatase 2A (PP2A), which is a ubiquitous phosphatase with broad substrate specificity and diverse cellular functions.

## Storage

### Storage:

Store at -20°C. Stable for one year after shipment.

### Storage Buffer:

PBS with 0.02% sodium azide and 50% glycerol pH 7.3.

Aliquoting is unnecessary for -20°C storage

\*\*\* 20ul sizes contain 0.1% BSA

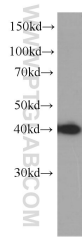
For technical support and original validation data for this product please contact:

T: 1 (888) 4PTGLAB (1-888-478-4522) (toll free  
in USA), or 1(312) 455-8498 (outside USA)

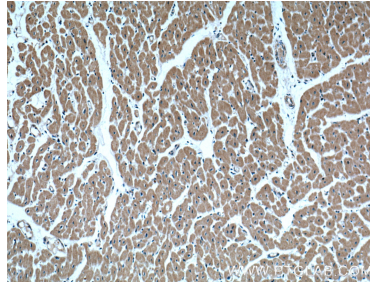
E: proteintech@ptglab.com  
W: ptglab.com

This product is exclusively available under Proteintech  
Group brand and is not available to purchase from any  
other manufacturer.

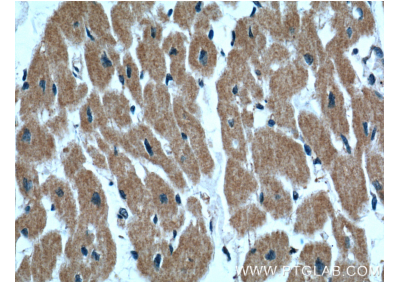
## Selected Validation Data



K-562 cells were subjected to SDS PAGE followed by western blot with 60256-1-Ig (IGBP1 antibody) at dilution of 1:1000 incubated at room temperature for 1.5 hours.



Immunohistochemical analysis of paraffin-embedded human heart tissue slide using 60256-1-Ig (IGBP1 Antibody) at dilution of 1:200 (under 10x lens).



Immunohistochemical analysis of paraffin-embedded human heart tissue slide using 60256-1-Ig (IGBP1 Antibody) at dilution of 1:200 (under 40x lens).