

For Research Use Only

IGBP1 Monoclonal antibody, PBS Only



Catalog Number: 60256-1-PBS

Basic Information

Catalog Number: 60256-1-PBS	GenBank Accession Number: BC004137	Purification Method: Protein G purification
Size: 100ug , Concentration: 1 mg/ml by Nanodrop;	GeneID (NCBI): 3476	CloneNo.: 2D11A8
Source: Mouse	UNIPROT ID: P78318	
Isotype: IgG1	Full Name: immunoglobulin (CD79A) binding protein 1	
Immunogen Catalog Number: AG6782	Calculated MW: 39 kDa	
	Observed MW: 40 kDa	

Applications

Tested Applications:
WB, IHC, Indirect ELISA

Species Specificity:
human, mouse

Background Information

Immunoglobulin-binding protein 1 (IGBP1), also known as ALPHA-4, was originally identified as a signal transduction molecule coprecipitating with MB1 (CD79a) protein of the B-cell antigen receptor (BCR) complex. IGBP1 has been characterized as an essential regulator of the catalytic activity of protein phosphatase 2A (PP2A), which is a ubiquitous phosphatase with broad substrate specificity and diverse cellular functions.

Storage

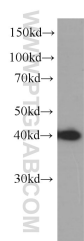
Storage:
Store at -80°C.

Storage Buffer:
PBS Only

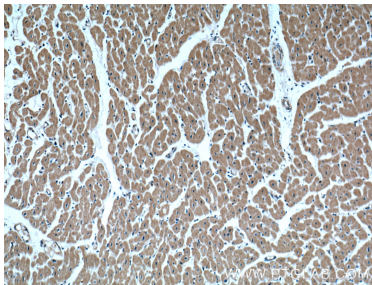
For technical support and original validation data for this product please contact:
T: 1 (888) 4PTGLAB (1-888-478-4522) (toll free in USA), or 1(312) 455-8498 (outside USA)
E: proteintech@ptglab.com
W: ptglab.com

This product is exclusively available under Proteintech Group brand and is not available to purchase from any other manufacturer.

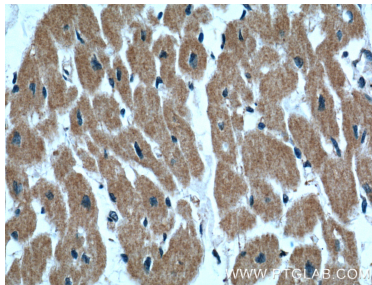
Selected Validation Data



K-562 cells were subjected to SDS PAGE followed by western blot with 60256-1-Ig (IGBP1 antibody) at dilution of 1:1000 incubated at room temperature for 1.5 hours. This data was developed using the same antibody clone with 60256-1-PBS in a different storage buffer formulation.



Immunohistochemical analysis of paraffin-embedded human heart tissue slide using 60256-1-Ig (IGBP1 Antibody) at dilution of 1:200 (under 10x lens). This data was developed using the same antibody clone with 60256-1-PBS in a different storage buffer formulation.



Immunohistochemical analysis of paraffin-embedded human heart tissue slide using 60256-1-Ig (IGBP1 Antibody) at dilution of 1:200 (under 40x lens). This data was developed using the same antibody clone with 60256-1-PBS in a different storage buffer formulation.