

For Research Use Only

Napsin A Monoclonal antibody

Catalog Number: 60259-2-Ig **2 Publications**



Basic Information

Catalog Number: 60259-2-Ig	GenBank Accession Number: BC017842	Purification Method: Protein A purification
Size: 150ul , Concentration: 1400 ug/ml by Nanodrop and 1000 ug/ml by Bradford method using BSA as the standard;	GeneID (NCBI): 9476	CloneNo.: 1H7F2
Source: Mouse	UNIPROT ID: O96009	Recommended Dilutions: IHC 1:10000-1:60000 IF/ICC 1:200-1:800
Isotype: IgG1	Full Name: napsin A aspartic peptidase	
Immunogen Catalog Number: AG9721	Calculated MW: 420 aa, 45 kDa	

Applications

Tested Applications: IHC, IF/ICC, FC (Intra), ELISA	Positive Controls: IHC : human lung cancer tissue, human kidney tissue, human renal cell carcinoma tissue IF/ICC : HUVEC cells,
Cited Applications: IHC, IF	
Species Specificity: human	
Cited Species: human	
Note-IHC: suggested antigen retrieval with TE buffer pH 9.0; (*) Alternatively, antigen retrieval may be performed with citrate buffer pH 6.0	

Background Information

Napsin is found in two isoforms, napsin A and B, with highly homologous nucleotide sequences (91.2%). Napsin A appears to be a functional proteinase, predominantly expressed in lung and kidney. Napsin B is transcribed exclusively in cells related to the immune system and lacks an in-frame stop codon and is believed to be a pseudogene.(PMID:12698189). Napsin A is superior to TTF-1 in distinguishing primary lung ACA from other carcinomas (except kidney), particularly primary lung small cell carcinoma, and primary thyroid carcinoma. (PMID:22288963).

Notable Publications

Author	Pubmed ID	Journal	Application
Yanyun Du	35017553	Nat Commun	IHC
Yan Li	38970088	Respir Res	IF

Storage

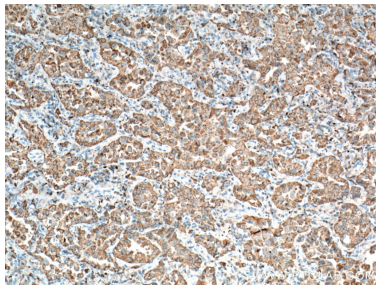
Storage:
Store at -20°C. Stable for one year after shipment.
Storage Buffer:
PBS with 0.02% sodium azide and 50% glycerol pH 7.3.
Aliquoting is unnecessary for -20°C storage

*** 20ul sizes contain 0.1% BSA

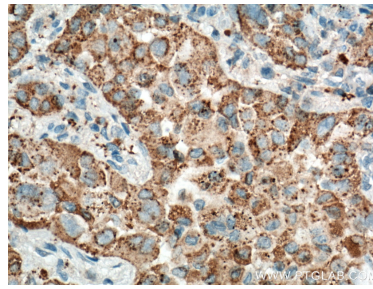
For technical support and original validation data for this product please contact:
T: 1 (888) 4PTGLAB (1-888-478-4522) (toll free in USA), or 1(312) 455-8498 (outside USA)
E: proteintech@ptglab.com
W: ptglab.com

This product is exclusively available under Proteintech Group brand and is not available to purchase from any other manufacturer.

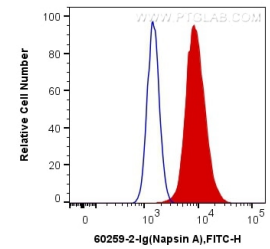
Selected Validation Data



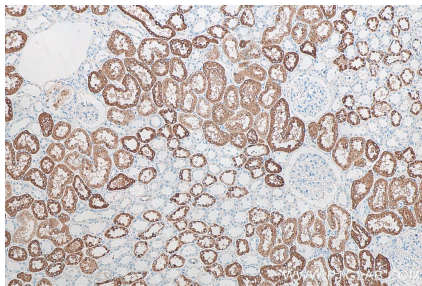
Immunohistochemical analysis of paraffin-embedded human lung cancer tissue slide using 60259-2-Ig (NAPSA antibody) at dilution of 1:4000 (under 10x lens. Heat mediated antigen retrieval with Tris-EDTA buffer (pH 9.0).



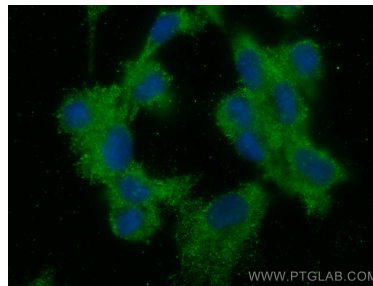
Immunohistochemical analysis of paraffin-embedded human lung cancer tissue slide using 60259-2-Ig (NAPSA antibody) at dilution of 1:4000 (under 40x lens. Heat mediated antigen retrieval with Tris-EDTA buffer (pH 9.0).



1X10⁶ A549 cells were intracellularly stained with 0.2 ug Anti-Human Napsin A (60259-2-Ig, Clone:1H7F2) and CoraLite®488-Conjugated AffiniPure Goat Anti-Mouse IgG(H+L) at dilution 1:1000 (red), or 0.2 ug Control Antibody. Cells were fixed with 4% PFA and permeabilized with Flow Cytometry Perm Buffer (PF00011-C).



Immunohistochemical analysis of paraffin-embedded human kidney tissue slide using 60259-2-Ig (Napsin A antibody) at dilution of 1:10000 (under 10x lens). Heat mediated antigen retrieval with Tris-EDTA buffer (pH 9.0).



Immunofluorescent analysis of (-20°C Methanol) fixed HUVEC cells using Napsin A antibody (60259-2-Ig, Clone: 1H7F2) at dilution of 1:400 and CoraLite®488-Conjugated AffiniPure Goat Anti-Mouse IgG(H+L).