

For Research Use Only

# IL-1R2 Monoclonal antibody

Catalog Number: 60262-1-Ig **2 Publications**



## Basic Information

<b>Catalog Number:</b> 60262-1-Ig	<b>GenBank Accession Number:</b> BC039031	<b>Purification Method:</b> Protein A purification
<b>Size:</b> 150ul , Concentration: 3200 µg/ml by Nanodrop and 2000 µg/ml by Bradford method using BSA as the standard;	<b>GeneID (NCBI):</b> 7850	<b>CloneNo.:</b> 3H4H4
<b>Source:</b> Mouse	<b>Full Name:</b> interleukin 1 receptor, type II	<b>Recommended Dilutions:</b> WB 1:500-1:2000 IF 1:20-1:200
<b>Isotype:</b> IgG2a	<b>Calculated MW:</b> 398 aa, 45 kDa	
<b>Immunogen Catalog Number:</b> AG4495	<b>Observed MW:</b> 45 kDa	

## Applications

<b>Tested Applications:</b> IF, WB, ELISA	<b>Positive Controls:</b> WB : HeLa cells,
<b>Cited Applications:</b> IF, WB	IF : HeLa cells,
<b>Species Specificity:</b> human, mouse	
<b>Cited Species:</b> rat, mouse	

## Background Information

Interleukin-1 receptor type 2 (IL1R2, also known as CD121b) is a cytokine receptor that belongs to the interleukin 1 receptor family. It exists in both a membrane bound and soluble form. IL1R2 binds interleukin alpha (IL1A), interleukin beta (IL1B), and interleukin 1 receptor, type I (IL1R1/IL1RA), and acts as a decoy receptor that inhibits the activity of its ligands. IL1R2 serves as a negative regulator of IL-1 signaling, thereby suppressing inflammatory response.

## Notable Publications

Author	Pubmed ID	Journal	Application
Jingzhe Wang	37273799	Mater Today Bio	WB
Meng-Bing Chen	36806583	Biochem Pharmacol	IF, WB

## Storage

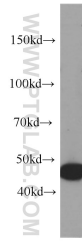
**Storage:**  
Store at -20°C. Stable for one year after shipment.  
**Storage Buffer:**  
PBS with 0.02% sodium azide and 50% glycerol pH 7.3.  
Aliquoting is unnecessary for -20°C storage

\*\*\* 20ul sizes contain 0.1% BSA

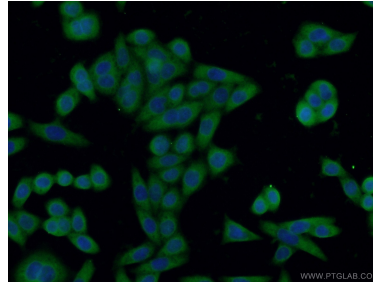
For technical support and original validation data for this product please contact:  
T: 1 (888) 4PTGLAB (1-888-478-4522) (toll free in USA), or 1(312) 455-8498 (outside USA)  
E: proteintech@ptglab.com  
W: ptglab.com

This product is exclusively available under Proteintech Group brand and is not available to purchase from any other manufacturer.

## Selected Validation Data



HeLa cells were subjected to SDS PAGE followed by western blot with 60262-1-Ig (IL1R2 antibody) at dilution of 1:1000 incubated at room temperature for 1.5 hours.



Immunofluorescent analysis of HeLa cells using 60262-1-Ig (IL1R2 antibody) at dilution of 1:50 and Alexa Fluor 488-conjugated AffiniPure Goat Anti-Mouse IgG (H+L).