

For Research Use Only

# MEST Monoclonal antibody

Catalog Number: 60263-1-Ig



## Basic Information

<b>Catalog Number:</b> 60263-1-Ig	<b>GenBank Accession Number:</b> BC011908	<b>Purification Method:</b> Protein A purification
<b>Size:</b> 150ul , Concentration: 3000 µg/ml by Nanodrop and 2000 µg/ml by Bradford method using BSA as the standard;	<b>GeneID (NCBI):</b> 4232	<b>CloneNo.:</b> 1A4A1
<b>Source:</b> Mouse	<b>Full Name:</b> mesoderm specific transcript homolog (mouse)	<b>Recommended Dilutions:</b> WB 1:500-1:2000 IHC 1:50-1:500 IF 1:50-1:500
<b>Isotype:</b> IgG2a	<b>Calculated MW:</b> 38 kDa	
<b>Immunogen Catalog Number:</b> AG11929	<b>Observed MW:</b> 34 kDa	

## Applications

<b>Tested Applications:</b> IF, IHC, WB, ELISA	<b>Positive Controls:</b>
<b>Species Specificity:</b> human, mouse	<b>WB :</b> PC-3 cells,
<b>Note-IHC: suggested antigen retrieval with TE buffer pH 9.0; (*) Alternatively, antigen retrieval may be performed with citrate buffer pH 6.0</b>	<b>IHC :</b> human prostate cancer tissue,
	<b>IF :</b> BxPC-3 cells,

## Background Information

MEST (Mesoderm-specific transcript homolog protein) is also named as PEG1 and belongs to the AB hydrolase superfamily. The gene is a imprinting gene, which is associated with growth of mesodermal origin cells (PMID:20339302) and plays important roles in embryo development (PMID:21375506). It is also a novel regulator of Wnt/CTNNB signalling during adipogenic differentiation (PMID:21375506). It has 3 isoforms produced by alternative splicing and the full length protein has a glycosylation site.

## Storage

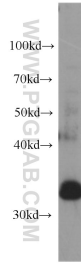
**Storage:**  
Store at -20°C. Stable for one year after shipment.  
**Storage Buffer:**  
PBS with 0.02% sodium azide and 50% glycerol pH 7.3.  
Aliquoting is unnecessary for -20°C storage

\*\*\* 20ul sizes contain 0.1% BSA

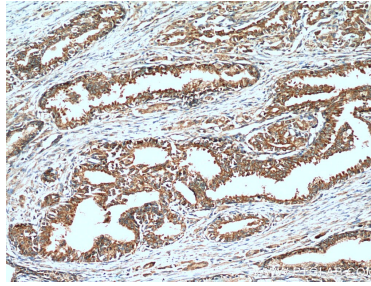
For technical support and original validation data for this product please contact:  
T: 1 (888) 4PTGLAB (1-888-478-4522) (toll free in USA), or 1(312) 455-8498 (outside USA)  
E: proteintech@ptglab.com  
W: ptglab.com

This product is exclusively available under Proteintech Group brand and is not available to purchase from any other manufacturer.

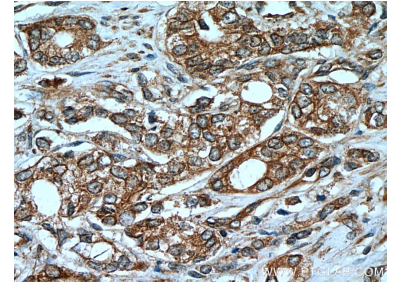
## Selected Validation Data



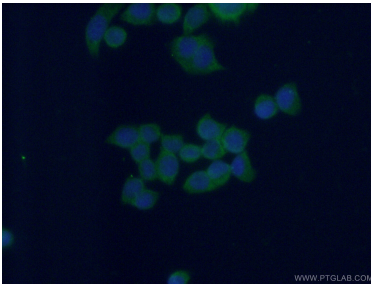
PC-3 cells were subjected to SDS PAGE followed by western blot with 60263-1-Ig (MEST antibody) at dilution of 1:1000 incubated at room temperature for 1.5 hours.



Immunohistochemical analysis of paraffin-embedded human prostate cancer tissue slide using 60263-1-Ig (MEST Antibody) at dilution of 1:400 (under 10x lens).



Immunohistochemical analysis of paraffin-embedded human prostate cancer tissue slide using 60263-1-Ig (MEST Antibody) at dilution of 1:400 (under 40x lens).



Immunofluorescent analysis of (-20°C Ethanol) fixed BxPC-3 cells using 60263-1-Ig(MEST antibody) at dilution of 1:100 and Alexa Fluor 488-conjugated AffiniPure Goat Anti-Mouse IgG(H+L).