

For Research Use Only

MEST Monoclonal antibody, PBS Only

Catalog Number: 60263-1-PBS



Basic Information

Catalog Number:

60263-1-PBS

Size:

100ug , Concentration: 1mg/ml by Nanodrop;

Source:

Mouse

Isotype:

IgG2a

Immunogen Catalog Number:

AG11929

GenBank Accession Number:

BC011908

GeneID (NCBI):

4232

UNIPROT ID:

Q5EB52

Full Name:

mesoderm specific transcript homolog (mouse)

Calculated MW:

38 kDa

Observed MW:

34 kDa

Purification Method:

Protein A purification

CloneNo.:

1A4A1

Applications

Tested Applications:

WB, IHC, IF/ICC, Indirect ELISA

Species Specificity:

human

Background Information

MEST(Mesoderm-specific transcript homolog protein) is also named as PEG1 and belongs to the AB hydrolase superfamily. The gene is a imprinting gene, which is associated with growth of mesodermal origin cells(PMID:20339302) and plays important roles in embryo development(PMID:21375506). It is also a novel regulator of Wnt/CTNNB signalling during adipogenic differentiation(PMID:21375506). It has 3 isoforms produced by alternative splicing and the full length protein has a glycosylation site.

Storage

Storage:

Store at -80°C.

Storage Buffer:

PBS Only

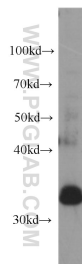
For technical support and original validation data for this product please contact:

T: 1 (888) 4PTGLAB (1-888-478-4522) (toll free in USA), or 1(312) 455-8498 (outside USA)

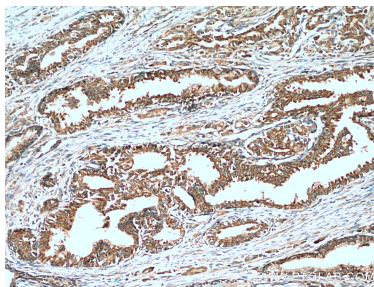
E: proteintech@ptglab.com
W: ptglab.com

This product is exclusively available under Proteintech Group brand and is not available to purchase from any other manufacturer.

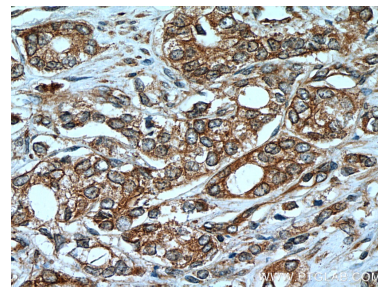
Selected Validation Data



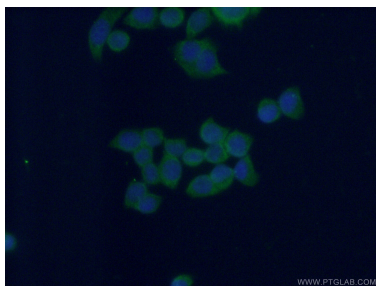
PC-3 cells were subjected to SDS PAGE followed by western blot with 60263-1-Ig (MEST antibody) at dilution of 1:1000 incubated at room temperature for 1.5 hours. This data was developed using the same antibody clone with 60263-1-PBS in a different storage buffer formulation.



Immunohistochemical analysis of paraffin-embedded human prostate cancer tissue slide using 60263-1-Ig (MEST Antibody) at dilution of 1:400 (under 10x lens). This data was developed using the same antibody clone with 60263-1-PBS in a different storage buffer formulation.



Immunohistochemical analysis of paraffin-embedded human prostate cancer tissue slide using 60263-1-Ig (MEST Antibody) at dilution of 1:400 (under 40x lens). This data was developed using the same antibody clone with 60263-1-PBS in a different storage buffer formulation.



Immunofluorescent analysis of (-20°C Ethanol) fixed BxPC-3 cells using 60263-1-Ig(MEST antibody) at dilution of 1:100 and Alexa Fluor 488-conjugated AffiniPure Goat Anti-Mouse IgG(H+L). This data was developed using the same antibody clone with 60263-1-PBS in a different storage buffer formulation.