

For Research Use Only

CCT3 Monoclonal antibody

Catalog Number: 60264-1-Ig **1 Publications**



Basic Information

Catalog Number: 60264-1-Ig	GenBank Accession Number: BC006501	Purification Method: Protein A purification
Size: 150ul , Concentration: 1800 µg/ml by Nanodrop and 847 µg/ml by Bradford method using BSA as the standard;	GeneID (NCBI): 7203	CloneNo.: 5F5A6
Source: Mouse	Full Name: chaperonin containing TCP1, subunit 3 (gamma)	Recommended Dilutions: WB 1:500-1:2000 IF 1:20-1:200
Isotype: IgG2b	Calculated MW: 60 kDa	
Immunogen Catalog Number: AG0843	Observed MW: 56-60 kDa	

Applications

Tested Applications: FC, IF, WB, ELISA	Positive Controls:
Cited Applications: CoIP, IF, WB	WB : COLO 320 cells,
Species Specificity: human, mouse	IF : HepG2 cells,
Cited Species: human, mouse	

Background Information

Notable Publications

Author	Pubmed ID	Journal	Application
Joshua Linnert	37427378	Front Cell Dev Biol	WB,IF,CoIP

Storage

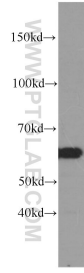
Storage:
Store at -20°C. Stable for one year after shipment.
Storage Buffer:
PBS with 0.02% sodium azide and 50% glycerol pH 7.3.
Aliquoting is unnecessary for -20°C storage

***** 20ul sizes contain 0.1% BSA**

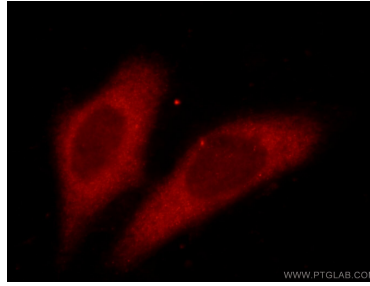
For technical support and original validation data for this product please contact:
T: 1 (888) 4PTGLAB (1-888-478-4522) (toll free in USA), or 1(312) 455-8498 (outside USA)
E: proteintech@ptglab.com
W: ptglab.com

This product is exclusively available under Proteintech Group brand and is not available to purchase from any other manufacturer.

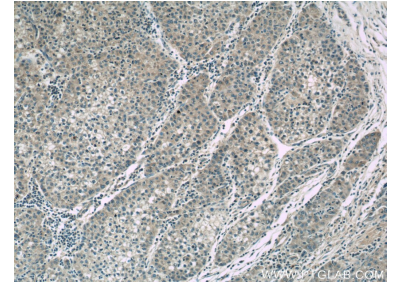
Selected Validation Data



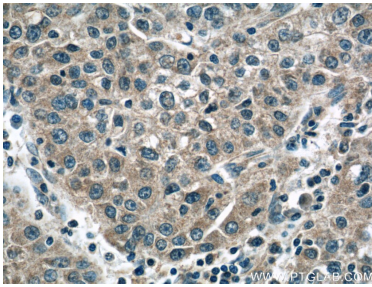
COLO 320 cells were subjected to SDS PAGE followed by western blot with 60264-1-Ig (CCT3 antibody) at dilution of 1:1000 incubated at room temperature for 1.5 hours.



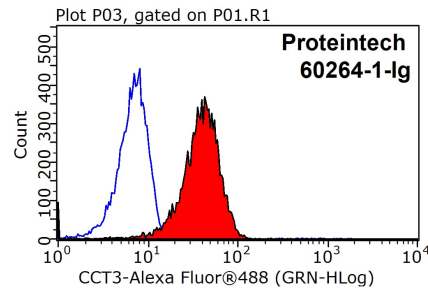
Immunofluorescent analysis of HepG2 cells using 60264-1-Ig (CCT3 Antibody) at dilution of 1:50 and Rhodamine-labeled goat anti-mouse IgG (red).



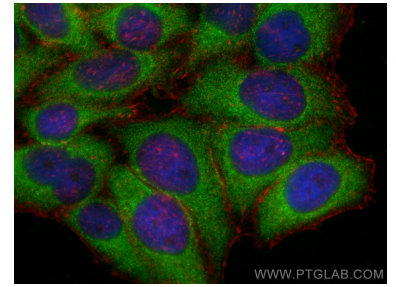
Immunohistochemical analysis of paraffin-embedded human liver cancer tissue slide using 60264-1-Ig (CCT3 Antibody) at dilution of 1:50.



Immunohistochemical analysis of paraffin-embedded human liver cancer tissue slide using 60264-1-Ig (CCT3 Antibody) at dilution of 1:50.



1x10⁶ HepG2 cells were stained with 0.2ug CCT3 antibody (60264-1-Ig, red) and control antibody (blue). Fixed with 90% MeOH blocked with 3% BSA (30 min). Alexa Fluor 488-conjugated AffiniPure Goat Anti-Mouse IgG(H+L) with dilution 1:1000.



Immunofluorescent analysis of (-20°C Ethanol) fixed HepG2 cells using CCT3 antibody (60264-1-Ig, Clone: 5F5A6) at dilution of 1:800 and CoraLite@488-Conjugated AffiniPure Goat Anti-Mouse IgG(H+L), CL594-Phalloidin (red).