

For Research Use Only

CCT3 Monoclonal antibody, PBS Only

Catalog Number: 60264-1-PBS



Basic Information

Catalog Number:

60264-1-PBS

Size:

100ug , Concentration: 1mg/ml by Nanodrop;

Source:

Mouse

Isotype:

IgG2b

Immunogen Catalog Number:

AG0843

GenBank Accession Number:

BC006501

GeneID (NCBI):

7203

UNIPROT ID:

P49368

Full Name:

chaperonin containing TCP1, subunit 3 (gamma)

Calculated MW:

60 kDa

Observed MW:

56-60 kDa

Purification Method:

Protein A purification

CloneNo.:

5F5A6

Applications

Tested Applications:

WB, IF, Indirect ELISA

Species Specificity:

human, mouse

Storage

Storage:

Store at -80°C.

Storage Buffer:

PBS Only

For technical support and original validation data for this product please contact:

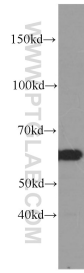
T: 1 (888) 4PTGLAB (1-888-478-4522) (toll free in USA), or 1(312) 455-8498 (outside USA)

E: proteintech@ptglab.com

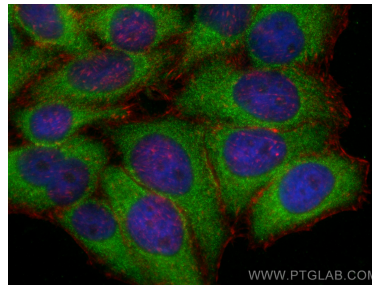
W: ptglab.com

This product is exclusively available under Proteintech Group brand and is not available to purchase from any other manufacturer.

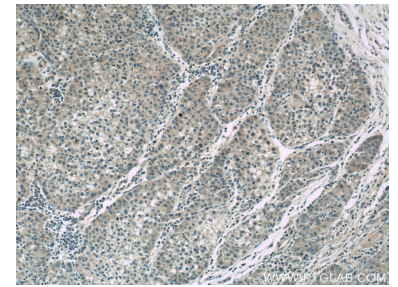
Selected Validation Data



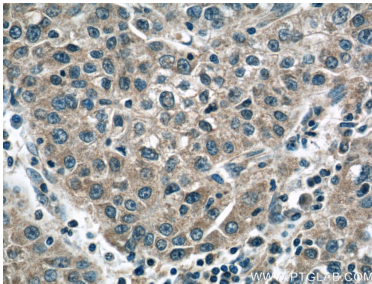
COLO 320 cells were subjected to SDS PAGE followed by western blot with 60264-1-Ig (CCT3 antibody) at dilution of 1:1000 incubated at room temperature for 1.5 hours. This data was developed using the same antibody clone with 60264-1-PBS in a different storage buffer formulation.



Immunofluorescent analysis of (-20°C Ethanol) fixed HepG2 cells using CCT3 antibody (60264-1-Ig, Clone: 5F5A6) at dilution of 1:800 and CoraLite®488-Conjugated AffiniPure Goat Anti-Mouse IgG(H+L), CL594-Phalloidin (red). This data was developed using the same antibody clone with 60264-1-PBS in a different storage buffer formulation.



Immunohistochemical analysis of paraffin-embedded human liver cancer tissue slide using 60264-1-Ig (CCT3 Antibody) at dilution of 1:50. This data was developed using the same antibody clone with 60264-1-PBS in a different storage buffer formulation.



Immunohistochemical analysis of paraffin-embedded human liver cancer tissue slide using 60264-1-Ig (CCT3 Antibody) at dilution of 1:50. This data was developed using the same antibody clone with 60264-1-PBS in a different storage buffer formulation.