

For Research Use Only

# CD20 Monoclonal antibody

Catalog Number: 60271-1-Ig **32 Publications**



## Basic Information

<b>Catalog Number:</b> 60271-1-Ig	<b>GenBank Accession Number:</b> BC002807	<b>Purification Method:</b> Protein A purification
<b>Size:</b> 150ul , Concentration: 1000 ug/ml by Nanodrop;	<b>GeneID (NCBI):</b> 931	<b>CloneNo.:</b> 4A7G3
<b>Source:</b> Mouse	<b>UNIPROT ID:</b> P11836	<b>Recommended Dilutions:</b> WB: 1:5000-1:50000 IHC: 1:1000-1:15000 IF-P: 1:200-1:800 IF/ICC: 1:400-1:1600
<b>Isotype:</b> IgG2b	<b>Full Name:</b> membrane-spanning 4-domains, subfamily A, member 1	
<b>Immunogen Catalog Number:</b> AG17309	<b>Calculated MW:</b> 297 aa, 33 kDa	
	<b>Observed MW:</b> 35 kDa	

## Applications

<b>Tested Applications:</b> WB, IHC, IF/ICC, IF-P, ELISA	<b>Positive Controls:</b> WB : Raji cells, Daudi cells, Ramos cells IHC : human tonsillitis tissue, human appendicitis tissue IF-P : human tonsillitis tissue, IF/ICC : Raji cells,
<b>Cited Applications:</b> WB, IHC, IF	
<b>Species Specificity:</b> human	
<b>Cited Species:</b> human	
<b>Note-IHC: suggested antigen retrieval with TE buffer pH 9.0; (*) Alternatively, antigen retrieval may be performed with citrate buffer pH 6.0</b>	

## Background Information

CD20 is a 33-37 kDa transmembrane phosphoprotein. CD20 is a B-lymphocyte surface molecule that is widely expressed during B-cell ontogeny, from early pre-B-cell developmental stages until final differentiation into plasma cells. CD20 functions as calcium-permeable cation channel. It is involved in the regulation of B-cell activation and proliferation. CD20 serves as a useful target for antibody-mediated therapeutic depletion of B-cells.

## Notable Publications

Author	Pubmed ID	Journal	Application
Ye Nie	36190431	FASEB J	IHC
Wenxing Yue	30911896	Virol Sin	IF
Zhixiu Xia	34127021	World J Surg Oncol	IHC

## Storage

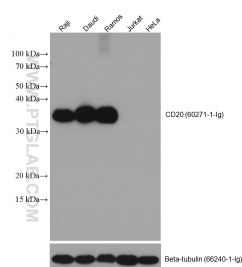
**Storage:**  
Store at -20°C. Stable for one year after shipment.  
**Storage Buffer:**  
PBS with 0.02% sodium azide and 50% glycerol, pH7.3  
Aliquoting is unnecessary for -20°C storage

\*\*\* 20ul sizes contain 0.1% BSA

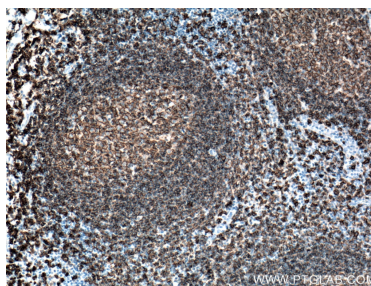
For technical support and original validation data for this product please contact:  
T: 1 (888) 4PTGLAB (1-888-478-4522) (toll free in USA), or 1(312) 455-8498 (outside USA)  
E: proteintech@ptglab.com  
W: ptglab.com

This product is exclusively available under Proteintech Group brand and is not available to purchase from any other manufacturer.

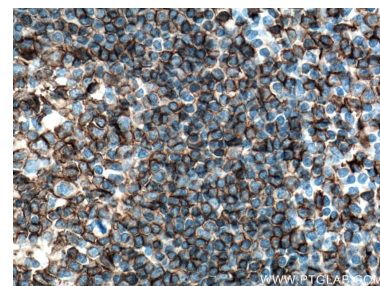
## Selected Validation Data



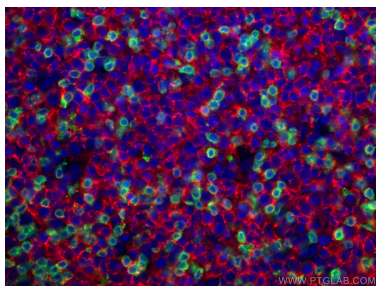
Raji cells (CD20+), Daudi cells (CD20+), Ramos cells (CD20+), Jurkat cells (CD20-), and HeLa cells (CD20-) were subjected to SDS PAGE followed by western blot with 60271-1-Ig (CD20 antibody) at dilution of 1:20000 incubated at room temperature for 1.5 hours.



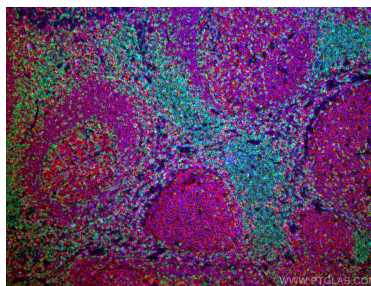
Immunohistochemical analysis of paraffin-embedded human tonsillitis tissue slide using 60271-1-Ig (CD20 antibody) at dilution of 1:12800 (under 10x lens). Heat mediated antigen retrieval with Tris-EDTA buffer (pH 9.0).



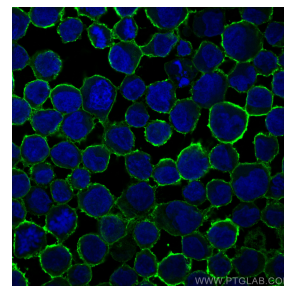
Immunohistochemical analysis of paraffin-embedded human tonsillitis tissue slide using 60271-1-Ig (CD20 antibody) at dilution of 1:12800 (under 40x lens). Heat mediated antigen retrieval with Tris-EDTA buffer (pH 9.0).



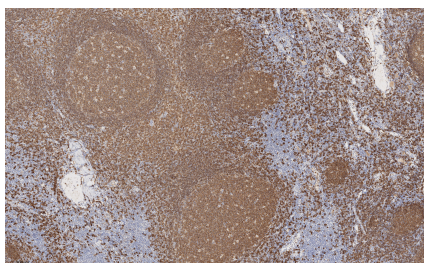
Immunofluorescent analysis of (4% PFA) fixed human tonsillitis tissue using CD20 antibody (60271-1-Ig, Clone: 4A7G3) at dilution of 1:400 and CoraLite®594-Conjugated AffiniPure Goat Anti-Mouse IgG(H+L), CD3 antibody (17617-1-AP, green).



Immunofluorescent analysis of (4% PFA) fixed human tonsillitis tissue using CD20 antibody (60271-1-Ig, Clone: 4A7G3) at dilution of 1:400 and CoraLite®594-Conjugated AffiniPure Goat Anti-Mouse IgG(H+L), CD3 antibody (17617-1-AP, green).



Immunofluorescent analysis of (4% PFA) fixed Raji cells using CD20 antibody (60271-1-Ig, Clone: 4A7G3) at dilution of 1:800 and CoraLite®488-Conjugated AffiniPure Goat Anti-Mouse IgG(H+L) (SA00013-1).



Immunohistochemical analysis of paraffin-embedded human tonsillitis tissue slide using 60271-1-Ig (CD20 antibody) at dilution of 1:20000 (under 10x lens). Heat mediated antigen retrieval with Tris-EDTA buffer (pH 9.0).