

For Research Use Only

CD20 Monoclonal antibody

Catalog Number: 60271-1-Ig **30 Publications**



Basic Information

Catalog Number: 60271-1-Ig	GenBank Accession Number: BC002807	Purification Method: Protein A purification
Size: 150ul, Concentration: 1000 ug/ml by Nanodrop;	GeneID (NCBI): 931	CloneNo.: 4A7G3
Source: Mouse	UNIPROT ID: P11836	Recommended Dilutions: WB 1:5000-1:50000 IHC 1:1000-1:15000 IF-P 1:200-1:800 IF/ICC 1:400-1:1600
Isotype: IgG2b	Full Name: membrane-spanning 4-domains, subfamily A, member 1	
Immunogen Catalog Number: AG17309	Calculated MW: 297 aa, 33 kDa	
	Observed MW: 35 kDa	

Applications

Tested Applications: WB, IHC, IF/ICC, IF-P, ELISA	Positive Controls: WB: Raji cells, Daudi cells, Ramos cells IHC: human tonsillitis tissue, human appendicitis tissue IF-P: human tonsillitis tissue, IF/ICC: Raji cells,
Cited Applications: IHC, IF	
Species Specificity: human	
Cited Species: human, pig	

Note-IHC: suggested antigen retrieval with TE buffer pH 9.0; (*) Alternatively, antigen retrieval may be performed with citrate buffer pH 6.0

Background Information

CD20 is a 33-37 kDa transmembrane phosphoprotein. CD20 is a B-lymphocyte surface molecule that is widely expressed during B-cell ontogeny, from early pre-B-cell developmental stages until final differentiation into plasma cells. CD20 functions as calcium-permeable cation channel. It is involved in the regulation of B-cell activation and proliferation. CD20 serves as a useful target for antibody-mediated therapeutic depletion of B-cells.

Notable Publications

Author	Pubmed ID	Journal	Application
Ye Nie	36190431	FASEBJ	IHC
Wenxing Yue	30911896	Viol Sin	IF
Zhixiu Xia	34127021	World J Surg Oncol	IHC

Storage

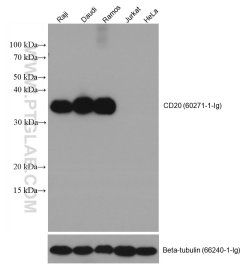
Storage:
Store at -20°C. Stable for one year after shipment.
Storage Buffer:
PBS with 0.02% sodium azide and 50% glycerol, pH7.3
Aliquoting is unnecessary for -20°C storage

*** 20ul sizes contain 0.1% BSA

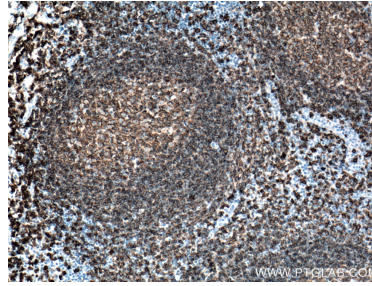
For technical support and original validation data for this product please contact:
T: 1 (888) 4PTGLAB (1-888-478-4522) (toll free in USA), or 1(312) 455-8498 (outside USA)
E: proteintech@ptglab.com
W: ptglab.com

This product is exclusively available under Proteintech Group brand and is not available to purchase from any other manufacturer.

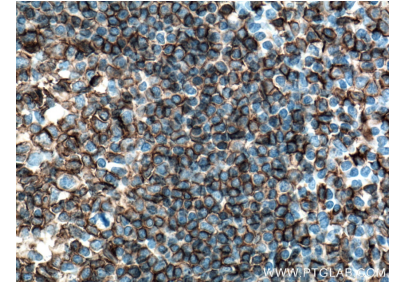
Selected Validation Data



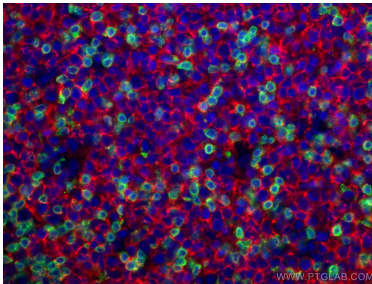
Raji cells (CD20+), Daudi cells (CD20+), Ramos cells (CD20+), Jurkat cells (CD20-), and HeLa cells (CD20-) were subjected to SDS PAGE followed by western blot with 60271-1-Ig (CD20 antibody) at dilution of 1:20000 incubated at room temperature for 1.5 hours.



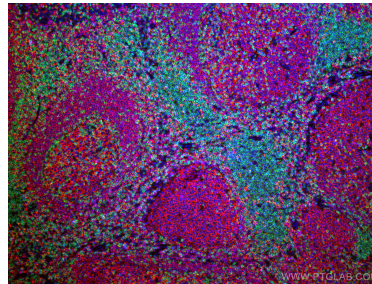
Immunohistochemical analysis of paraffin-embedded human tonsillitis tissue slide using 60271-1-Ig (CD20 antibody) at dilution of 1:12800 (under 10x lens). Heat mediated antigen retrieval with Tris-EDTA buffer (pH 9.0).



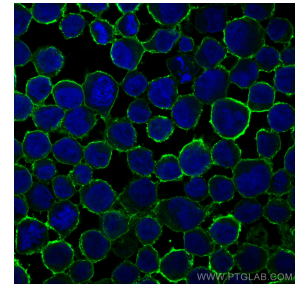
Immunohistochemical analysis of paraffin-embedded human tonsillitis tissue slide using 60271-1-Ig (CD20 antibody) at dilution of 1:12800 (under 40x lens). Heat mediated antigen retrieval with Tris-EDTA buffer (pH 9.0).



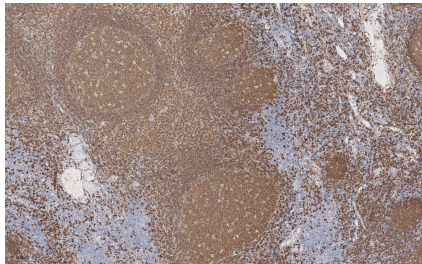
Immunofluorescent analysis of (4% PFA) fixed human tonsillitis tissue using CD20 antibody (60271-1-Ig, Clone: 4A7G3) at dilution of 1:400 and CoraLite@594-Conjugated AffiniPure Goat Anti-Mouse IgG(H+L), CD3 antibody (17617-1-AP, green).



Immunofluorescent analysis of (4% PFA) fixed human tonsillitis tissue using CD20 antibody (60271-1-Ig, Clone: 4A7G3) at dilution of 1:400 and CoraLite@594-Conjugated AffiniPure Goat Anti-Mouse IgG(H+L), CD3 antibody (17617-1-AP, green).



Immunofluorescent analysis of (4% PFA) fixed Raji cells using CD20 antibody (60271-1-Ig, Clone: 4A7G3) at dilution of 1:800 and CoraLite@488-Conjugated AffiniPure Goat Anti-Mouse IgG(H+L) (SA00013-1).



Immunohistochemical analysis of paraffin-embedded human tonsillitis tissue slide using 60271-1-Ig (CD20 antibody) at dilution of 1:20000 (under 10x lens). Heat mediated antigen retrieval with Tris-EDTA buffer (pH 9.0).