

For Research Use Only

CRYBB1 Monoclonal antibody, PBS Only



Catalog Number: 60273-1-PBS

Basic Information

Catalog Number: 60273-1-PBS	GenBank Accession Number: BC036790	Purification Method: Protein A purification
Size: 100ug , Concentration: 1 mg/ml by Nanodrop;	GeneID (NCBI): 1414	CloneNo.: 6F12B12
Source: Mouse	UNIPROT ID: P53674	
Isotype: IgG1	Full Name: crystallin, beta B1	
Immunogen Catalog Number: AG4722	Calculated MW: 252 aa, 28 kDa	
	Observed MW: 30 kDa	

Applications

Tested Applications:
WB, IF, Indirect ELISA

Species Specificity:
human, mouse, rat

Background Information

Mutation in CRYBB1 is associated with congenital Cataract-Microcornea Syndrome.

Storage

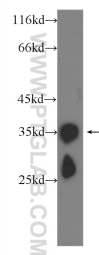
Storage:
Store at -80°C.

Storage Buffer:
PBS Only

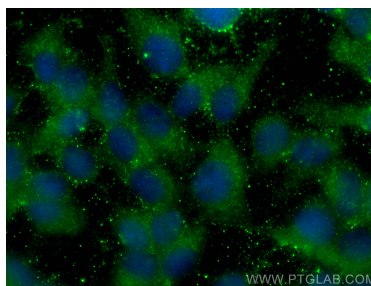
For technical support and original validation data for this product please contact:
T: 1 (888) 4PTGLAB (1-888-478-4522) (toll free in USA), or 1(312) 455-8498 (outside USA)
E: proteintech@ptglab.com
W: ptglab.com

This product is exclusively available under Proteintech Group brand and is not available to purchase from any other manufacturer.

Selected Validation Data



C6 cells were subjected to SDS PAGE followed by western blot with 60273-1-Ig (CRYBB1 Antibody) at dilution of 1:1000 incubated at room temperature for 1.5 hours. This data was developed using the same antibody clone with 60273-1-PBS in a different storage buffer formulation.



Immunofluorescent analysis of (-20°C Methanol) fixed hTERT-RPE1 cells using CRYBB1 antibody (60273-1-Ig, Clone: 6F12B12) at dilution of 1:600 and CoraLite®488-Conjugated AffiniPure Goat Anti-Mouse IgG(H+L). This data was developed using the same antibody clone with 60273-1-PBS in a different storage buffer formulation.