

For Research Use Only

Chk1 Monoclonal antibody

Catalog Number: 60277-1-Ig **8 Publications**



Basic Information

Catalog Number: 60277-1-Ig	GenBank Accession Number: BC004202	Purification Method: Protein A purification
Size: 150ul , Concentration: 2100 ug/ml by Nanodrop and 1200 ug/ml by Bradford method using BSA as the standard;	GeneID (NCBI): 1111	CloneNo.: 3A3A5
Source: Mouse	UNIPROT ID: O14757	Recommended Dilutions: WB 1:1000-1:3000 IHC 1:250-1:1000
Isotype: IgG2b	Full Name: CHK1 checkpoint homolog (S. pombe)	
Immunogen Catalog Number: AG0409	Calculated MW: 54 kDa	
	Observed MW: 50 kDa	

Applications

Tested Applications: WB, IHC, ELISA	Positive Controls: WB : HeLa cells, NIH/3T3 cells, HEK-293 cells, Jurkat cells, K-562 cells IHC : human breast cancer tissue,
Cited Applications: WB	
Species Specificity: human, mouse, rat	
Cited Species: human, mouse	
Note-IHC: suggested antigen retrieval with TE buffer pH 9.0; (*) Alternatively, antigen retrieval may be performed with citrate buffer pH 6.0	

Background Information

CHEK1(Checkpoint kinase-1) is also named as CHK1 and belongs to the protein kinase superfamily. It is implicated in a circuit in which it activates checkpoints, DNA repair and proliferating cell nuclear antigen and FANCD2 monoubiquitylation(PMID:21389083). CHEK1 protects vertebrate cells against spontaneous chromosome missegregation and is required to sustain anaphase delay when spindle function is disrupted by taxol(PMID:17276342). It has 3 isoforms produced by alternative splicing with the molecular mass of 54 kDa, 44 kDa and 50 kDa.

Notable Publications

Author	Pubmed ID	Journal	Application
Ping Li	34285189	Cell Death Discov	WB
Xinxin Zuo	33398173	Nat Struct Mol Biol	WB
Yoh Asahi	39326133	Phytomedicine	WB

Storage

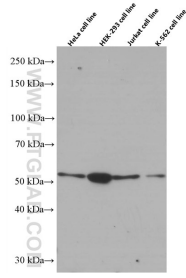
Storage:
Store at -20°C. Stable for one year after shipment.
Storage Buffer:
PBS with 0.02% sodium azide and 50% glycerol pH 7.3.
Aliquoting is unnecessary for -20°C storage

*** 20ul sizes contain 0.1% BSA

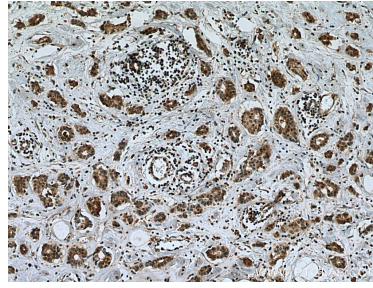
For technical support and original validation data for this product please contact:
T: 1 (888) 4PTGLAB (1-888-478-4522) (toll free in USA), or 1(312) 455-8498 (outside USA)
E: proteintech@ptglab.com
W: ptglab.com

This product is exclusively available under Proteintech Group brand and is not available to purchase from any other manufacturer.

Selected Validation Data



Various lysates were subjected to SDS PAGE followed by western blot with 60277-1-Ig (Chk1 antibody) at dilution of 1:3000 incubated at room temperature for 1.5 hours.



Immunohistochemical analysis of paraffin-embedded human breast cancer tissue slide using 60277-1-Ig (Chk1 antibody) at dilution of 1:500 (under 10x lens). Heat mediated antigen retrieval with Tris-EDTA buffer (pH 9.0).