

For Research Use Only

SECTM1 Monoclonal antibody

Catalog Number: 60281-1-Ig **1 Publications**



Basic Information

Catalog Number: 60281-1-Ig	GenBank Accession Number: BC017716	Purification Method: Thiophilic affinity chromatograph
Size: 150ul , Concentration: 1000 ug/ml by Nanodrop and 1000 ug/ml by Bradford method using BSA as the standard;	GeneID (NCBI): 6398	CloneNo.: 1C11B4
Source: Mouse	UNIPROT ID: Q8WVN6	Recommended Dilutions: WB 1:1000-1:4000 IHC 1:50-1:500
Isotype: IgM	Full Name: secreted and transmembrane 1	
Immunogen Catalog Number: AG14645	Calculated MW: 248 aa, 27 kDa	
	Observed MW: 27 kDa	

Applications

Tested Applications: WB, IHC, ELISA	Positive Controls: WB : HaCaT cells, JAR cells, NCCIT cells, PC-3 cells, LNCaP cells, HeLa cells, K-562 cells
Cited Applications: WB, IHC	IHC : human breast cancer tissue, human colon cancer tissue
Species Specificity: human	
Cited Species: human	

Note-IHC: suggested antigen retrieval with TE buffer pH 9.0; (*) Alternatively, antigen retrieval may be performed with citrate buffer pH 6.0

Background Information

SECTM1, also named as protein K12, is originally identified by its location just upstream of the CD7 locus. It has been proposed as a ligand for CD7. SECTM1 is involved in thymocyte signaling. This antibody is specific to SECTM1.

Notable Publications

Author	Pubmed ID	Journal	Application
Jie Mei	36818292	iScience	WB,IHC

Storage

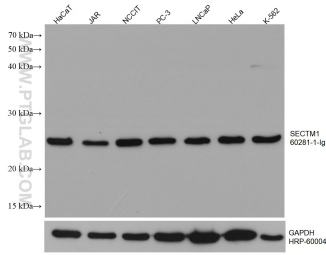
Storage:
Store at -20°C. Stable for one year after shipment.
Storage Buffer:
PBS with 0.02% sodium azide and 50% glycerol, pH7.3
Aliquoting is unnecessary for -20°C storage

*** 20ul sizes contain 0.1% BSA

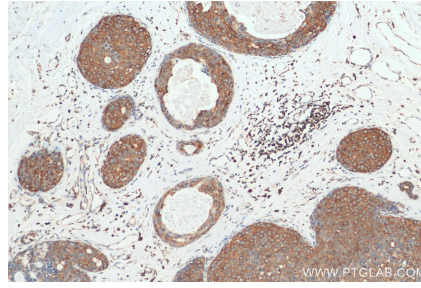
For technical support and original validation data for this product please contact:
T: 1 (888) 4PTGLAB (1-888-478-4522) (toll free in USA), or 1(312) 455-8498 (outside USA)
E: proteintech@ptglab.com
W: ptglab.com

This product is exclusively available under Proteintech Group brand and is not available to purchase from any other manufacturer.

Selected Validation Data



Various lysates were subjected to SDS PAGE followed by western blot with 60281-1-Ig (SECTM1 antibody) at dilution of 1:2000 incubated at room temperature for 1.5 hours. The membrane was stripped and reblotted with HRP-conjugated GAPDH Monoclonal antibody (HRP-60004) as loading control.



Immunohistochemical analysis of paraffin-embedded human breast cancer tissue slide using 60281-1-Ig (SECTM1 antibody) at dilution of 1:200 (under 10x lens). Heat mediated antigen retrieval with Tris-EDTA buffer (pH 9.0).