

For Research Use Only

SECTM1 Monoclonal antibody, PBS Only



Catalog Number: 60281-1-PBS

Basic Information

Catalog Number:

60281-1-PBS

Size:

100ug, Concentration: 1 mg/ml by Nanodrop;

Source:

Mouse

Isotype:

IgM

Immunogen Catalog Number:

AG14645

GenBank Accession Number:

BC017716

GeneID (NCBI):

6398

UNIPROT ID:

Q8WVN6

Full Name:

secreted and transmembrane 1

Calculated MW:

248 aa, 27 kDa

Observed MW:

27 kDa

Purification Method:

Thiophilic affinity chromatograph

CloneNo.:

1C11B4

Applications

Tested Applications:

WB, FC, IHC, Indirect ELISA

Species Specificity:

human

Background Information

SECTM1, also named as protein K12, is originally identified by its location just upstream of the CD7 locus. It has been proposed as a ligand for CD7. SECTM1 is involved in thymocyte signaling. This antibody is specific to SECTM1.

Storage

Storage:

Store at -80°C.

Storage Buffer:

PBS Only

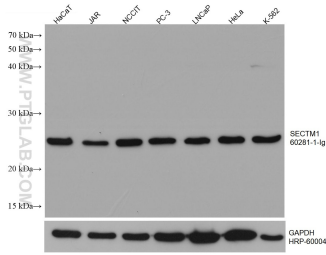
For technical support and original validation data for this product please contact:

T: 1 (888) 4PTGLAB (1-888-478-4522) (toll free in USA), or 1(312) 455-8498 (outside USA)

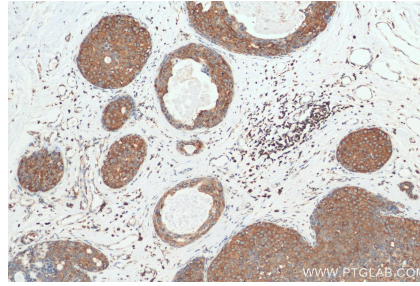
E: proteintech@ptglab.com
W: ptglab.com

This product is exclusively available under Proteintech Group brand and is not available to purchase from any other manufacturer.

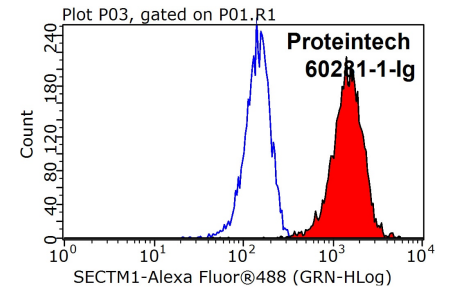
Selected Validation Data



Various lysates were subjected to SDS PAGE followed by western blot with 60281-1-Ig (SECTM1 antibody) at dilution of 1:2000 incubated at room temperature for 1.5 hours. The membrane was stripped and reblotted with HRP-conjugated GAPDH Monoclonal antibody (HRP-60004) as loading control. This data was developed using the same antibody clone with 60281-1-PBS in a different storage buffer formulation.



Immunohistochemical analysis of paraffin-embedded human breast cancer tissue slide using 60281-1-Ig (SECTM1 antibody) at dilution of 1:200 (under 10x lens). Heat mediated antigen retrieval with Tris-EDTA buffer (pH 9.0). This data was developed using the same antibody clone with 60281-1-PBS in a different storage buffer formulation.



1×10^6 K-562 cells were stained with 0.2ug SECTM1 antibody (60281-1-Ig, red) and control antibody (blue). Fixed with 90% MeOH blocked with 3% BSA (30 min). Alexa Fluor 488-conjugated AffiniPure Goat Anti-Mouse IgG(H+L) with dilution 1:1000. This data was developed using the same antibody clone with 60281-1-PBS in a different storage buffer formulation.