

For Research Use Only

CD45 Monoclonal antibody, PBS Only (Capture)

Catalog Number: 60287-1-PBS



Basic Information

Catalog Number: 60287-1-PBS	GenBank Accession Number: BC014239	Purification Method: Protein A purification
Size: 100ug , Concentration: 1mg/ml by Nanodrop;	GeneID (NCBI): 5788	CloneNo.: 4E9B2
Source: Mouse	ENSEMBL Gene ID: ENSG00000081237	
Isotype: IgG2a	UNIPROT ID: P08575	
Immunogen Catalog Number: AG13712	Full Name: protein tyrosine phosphatase, receptor type, C	
	Calculated MW: 1304 aa, 147 kDa	
	Observed MW: 220 kDa	

Applications

Tested Applications:
WB, IHC, IF/ICC, IF-P, IF-Fro, Cytometric bead array, Indirect ELISA

Species Specificity:
human, mouse, rat, pig

Product Information

60287-1-PBS targets CD45 as part of a matched antibody pair:

MP50221-4: 60287-1-PBS capture and 60287-5-PBS detection (validated in Cytometric bead array)

Unconjugated mouse monoclonal antibody pair in PBS only (BSA and azide free) storage buffer at a concentration of 1 mg/mL, ready for conjugation.

This conjugation ready format makes antibodies ideal for use in many applications including: ELISAs, multiplex assays requiring matched pairs, mass cytometry, and multiplex imaging applications. Antibody use should be optimized by the end user for each application and assay.

Background Information

CD45, also known as leukocyte common antigen (LCA), B220, and T200, is a 180-240 kD single-chain type I membrane glycoprotein. It is a tyrosine phosphatase expressed on the plasma membrane of all hematopoietic cells, except erythrocytes and platelets. CD45 is a signaling molecule that regulates a variety of cellular processes including cell growth, differentiation, cell cycle, and oncogenic transformation. CD45 is one of the best negative selection markers for characterizing and/or isolating human mesenchymal stem cells from bone marrow and other sources. Along with the positive selection markers (such as CD29, CD44, CD90, CD105 and CD166), negative selection markers (such as CD34 and CD45) are used for MSC identification.

Storage

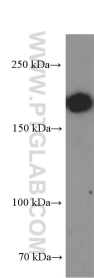
Storage:
Store at -80°C.

Storage Buffer:
PBS only, pH7.3

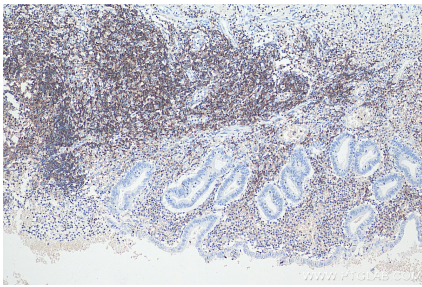
For technical support and original validation data for this product please contact:
T: 1 (888) 4PTGLAB (1-888-478-4522) (toll free in USA), or 1(312) 455-8498 (outside USA)
E: proteintech@ptglab.com
W: ptglab.com

This product is exclusively available under Proteintech Group brand and is not available to purchase from any other manufacturer.

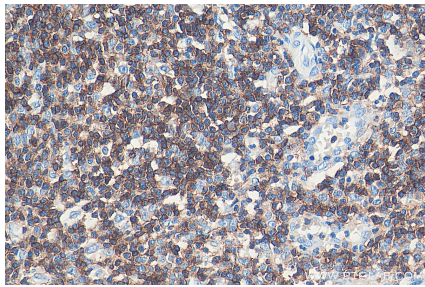
Selected Validation Data



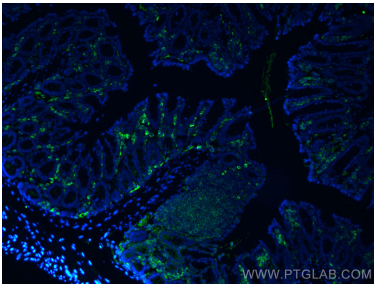
pig spleen tissue were subjected to SDS PAGE followed by western blot with 60287-1-Ig (CD45 Antibody) at dilution of 1:2000 incubated at room temperature for 1.5 hours. This data was developed using the same antibody clone with 60287-1-PBS in a different storage buffer formulation.



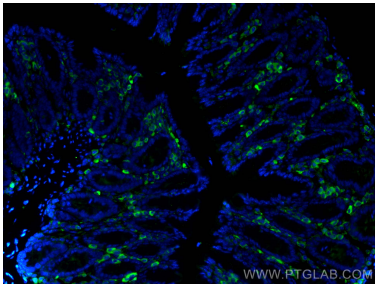
Immunohistochemical analysis of paraffin-embedded human appendicitis tissue slide using 60287-1-Ig (CD45 antibody) at dilution of 1:8000 (under 0x lens). Heat mediated antigen retrieval with Tris-EDTA buffer (pH 9.0). This data was developed using the same antibody clone with 60287-1-PBS in a different storage buffer formulation.



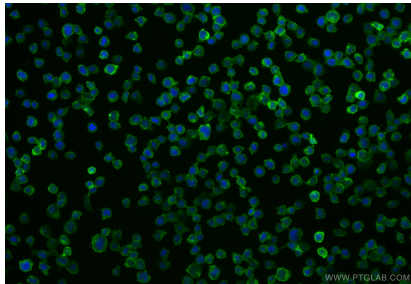
Immunohistochemical analysis of paraffin-embedded human appendicitis tissue slide using 60287-1-Ig (CD45 antibody) at dilution of 1:8000 (under 40x lens). Heat mediated antigen retrieval with Tris-EDTA buffer (pH 9.0). This data was developed using the same antibody clone with 60287-1-PBS in a different storage buffer formulation.



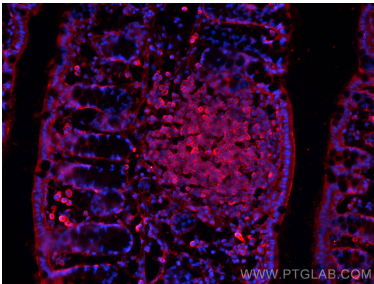
Immunofluorescent analysis of (4% PFA) fixed mouse colon tissue using CD45 antibody (60287-1-Ig, Clone: 4E9B2) at dilution of 1:1000 and CoraLite@488-Conjugated AffiniPure Goat Anti-Mouse IgG(H+L). This data was developed using the same antibody clone with 60287-1-PBS in a different storage buffer formulation.



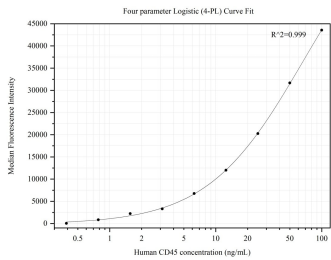
Immunofluorescent analysis of (4% PFA) fixed mouse colon tissue using CD45 antibody (60287-1-Ig, Clone: 4E9B2) at dilution of 1:1000 and CoraLite@488-Conjugated AffiniPure Goat Anti-Mouse IgG(H+L). This data was developed using the same antibody clone with 60287-1-PBS in a different storage buffer formulation.



Immunofluorescent analysis of (4% PFA) fixed Jurkat cells using CD45 antibody (60287-1-Ig, Clone: 4E9B2) at dilution of 1:400 and CoraLite@488-Conjugated Goat Anti-Mouse IgG(H+L) (SA00013-1). This data was developed using the same antibody clone with 60287-1-PBS in a different storage buffer formulation.



Immunofluorescent analysis of (4% PFA) fixed frozen OCT-embedded mouse colon tissue using 60287-1-Ig (CD45 antibody) at dilution of 1:800 and CoraLite@594-Conjugated AffiniPure Goat Anti-Mouse IgG(H+L). This data was developed using the same antibody clone with 60287-1-PBS in a different storage buffer formulation.



Cytometric bead array standard curve of MP50221-4, CD45 Monoclonal Matched Antibody Pair, PBS Only. Capture antibody: 60287-1-PBS. Detection antibody: 60287-5-PBS. Standard:Ag13712. Range: 0.391-100 ng/mL.