

For Research Use Only

# RBM4 Monoclonal antibody

Catalog Number: 60292-1-Ig

Featured Product



## Basic Information

Catalog Number:

60292-1-Ig

GenBank Accession Number:

BC021120

Purification Method:

Protein A purification

Size:

150ul, Concentration: 2300 ug/ml by 5936  
Nanodrop and 1453 ug/ml by Bradford  
method using BSA as the standard;

GeneID (NCBI):

5936

CloneNo.:

3H3F12

UNIPROT ID:

Q9BWF3

Recommended Dilutions:

WB 1:5000-1:50000

Source:

Mouse

Full Name:

RNA binding motif protein 4

IHC 1:20-1:200

IF/ICC 1:50-1:500

Isotype:

IgG2a

Calculated MW:

40 kDa

Immunogen Catalog Number:

AG2190

Observed MW:

40 kDa

## Applications

Tested Applications:

WB, IHC, IF/ICC, ELISA

Species Specificity:

human

**Note-IHC: suggested antigen retrieval with  
TE buffer pH 9.0; (\*) Alternatively, antigen  
retrieval may be performed with citrate  
buffer pH 6.0**

Positive Controls:

WB : MCF-7 cells, fetal human brain tissue, HeLa cells,  
HepG2 cells, Jurkat cells, K-562 cells

IHC : human cervical cancer tissue, human stomach  
tissue

IF/ICC : HeLa cells,

## Background Information

RBM4, RNA-binding motif protein4, contains 2 RRM-type RNA-binding motif and a retroviral-type(RT) zinc finger. RNA-binding factor participates in number of aspects of cellular processes such as alternative splicing of pre-mRNA and translation regulation. RBM4 recruits eIF4A1 to stimulate IRES-dependent translation in responds to cellular stress. Once assembled at the rHRE, the HIF2A-RBM4-eIF4E2 complex captures the 5-prime cap and targets mRNAs to polysomes for active translation, thereby evading hypoxia-induced repression of protein synthesis.

## Storage

Storage:

Store at -20°C. Stable for one year after shipment.

Storage Buffer:

PBS with 0.02% sodium azide and 50% glycerol pH 7.3.

Aliquoting is unnecessary for -20°C storage

\*\*\* 20ul sizes contain 0.1% BSA

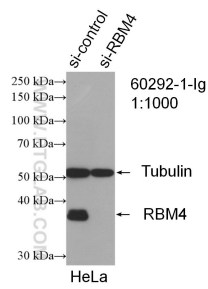
For technical support and original validation data for this product please contact:

T: 1 (888) 4PTGLAB (1-888-478-4522) (toll free  
in USA), or 1(312) 455-8498 (outside USA)

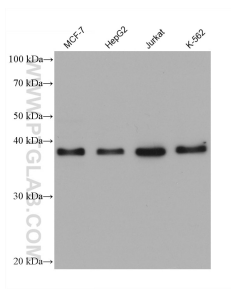
E: [proteintech@ptglab.com](mailto:proteintech@ptglab.com)  
W: [ptglab.com](http://ptglab.com)

This product is exclusively available under Proteintech Group brand and is not available to purchase from any other manufacturer.

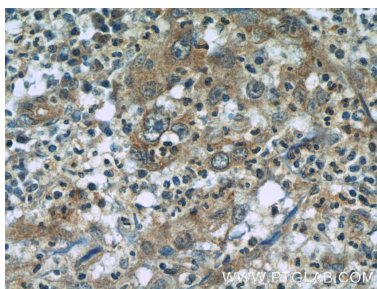
Selected Validation Data



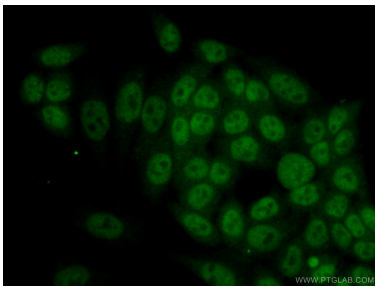
WB result of RBM4 antibody (60292-1-Ig; 1:1000; incubated at room temperature for 1.5 hours) with sh-Control and sh-RBM4 transfected HeLa cells.



Various lysates were subjected to SDS PAGE followed by western blot with 60292-1-Ig (RBM4 antibody) at dilution of 1:20000 incubated at room temperature for 1.5 hours.



Immunohistochemical analysis of paraffin-embedded human cervical cancer tissue slide using 60292-1-Ig (RBM4 Antibody) at dilution of 1:50 (under 40x lens).



Immunofluorescent analysis of (10% Formaldehyde ) fixed HeLa cells using 60292-1-Ig(RBM4 antibody) at dilution of 1:100 and Alexa Fluor 488-conjugated Goat Anti-Mouse IgG(H+L).