

For Research Use Only

# RBM4 Monoclonal antibody, PBS Only



Catalog Number: 60292-1-PBS

Featured Product

## Basic Information

Catalog Number:

60292-1-PBS

Size:

100ug , Concentration: 1 mg/ml by Nanodrop;

Source:

Mouse

Isotype:

IgG2a

Immunogen Catalog Number:

AG2190

GenBank Accession Number:

BC021120

GeneID (NCBI):

5936

UNIPROT ID:

Q9BWF3

Full Name:

RNA binding motif protein 4

Calculated MW:

40 kDa

Observed MW:

40 kDa

Purification Method:

Protein A purification

CloneNo.:

3H3F 12

## Applications

Tested Applications:

WB, IF, IHC, Indirect ELISA

Species Specificity:

human

## Background Information

RBM4, RNA-binding motif protein4, contains 2 RRM-type RNA-binding motif and a retroviral-type(RT) zinc finger. RNA-binding factor participates in number of aspects of cellular processes such as alternative splicing of pre-mRNA and translation regulation. RBM4 recruits eIF4A1 to stimulate IRES-dependent translation in responds to cellular stress. Once assembled at the rHRE, the HIF2A-RBM4-eIF4E2 complex captures the 5-prime cap and targets mRNAs to polysomes for active translation, thereby evading hypoxia-induced repression of protein synthesis.

## Storage

Storage:

Store at -80°C.

Storage Buffer:

PBS Only

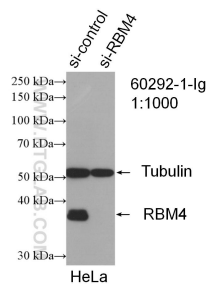
For technical support and original validation data for this product please contact:

T: 1 (888) 4PTGLAB (1-888-478-4522) (toll free in USA), or 1(312) 455-8498 (outside USA)

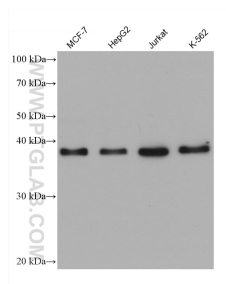
E: [proteintech@ptglab.com](mailto:proteintech@ptglab.com)  
W: [ptglab.com](http://ptglab.com)

This product is exclusively available under Proteintech Group brand and is not available to purchase from any other manufacturer.

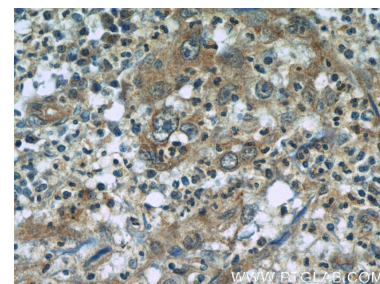
## Selected Validation Data



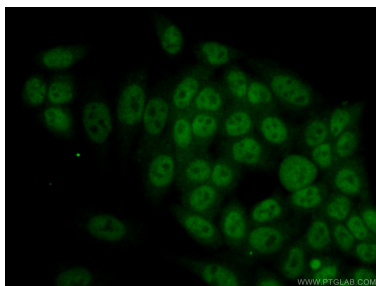
WB result of RBM4 antibody (60292-1-Ig; 1:1000; incubated at room temperature for 1.5 hours) with sh-Control and sh-RBM4 transfected HeLa cells. This data was developed using the same antibody clone with 60292-1-PBS in a different storage buffer formulation.



Various lysates were subjected to SDS PAGE followed by western blot with 60292-1-Ig (RBM4 antibody) at dilution of 1:20000 incubated at room temperature for 1.5 hours. This data was developed using the same antibody clone with 60292-1-PBS in a different storage buffer formulation.



Immunohistochemical analysis of paraffin-embedded human cervical cancer tissue slide using 60292-1-Ig (RBM4 Antibody) at dilution of 1:50 (under 40x lens). This data was developed using the same antibody clone with 60292-1-PBS in a different storage buffer formulation.



Immunofluorescent analysis of (10% Formaldehyde) fixed HeLa cells using 60292-1-Ig (RBM4 antibody) at dilution of 1:100 and Alexa Fluor 488-conjugated AffiniPure Goat Anti-Mouse IgG(H+L). This data was developed using the same antibody clone with 60292-1-PBS in a different storage buffer formulation.