

For Research Use Only

SCGF Monoclonal antibody, PBS Only

Catalog Number: 60295-1-PBS



Basic Information

Catalog Number: 60295-1-PBS	GenBank Accession Number: BC005810	Purification Method: Protein A purification
Size: 100ug , Concentration: 1mg/ml by Nanodrop;	GeneID (NCBI): 6320	CloneNo.: 4H11E4
Source: Mouse	UNIPROT ID: Q9Y240	
Isotype: IgG2b	Full Name: C-type lectin domain family 11, member A	
Immunogen Catalog Number: AG21365	Calculated MW: 36 kDa	
	Observed MW: 36 kDa	

Applications

Tested Applications:
WB, IHC, IF/ICC, IF-P, Indirect ELISA

Species Specificity:
human

Background Information

CLEC11A, also named as CLECSF3, LSLCL, SCGF and p47, stimulates the proliferation and differentiation of hematopoietic precursor cells from various lineages, including erythrocytes, lymphocytes, granulocytes and macrophages. CLEC11A acts synergistically with other cytokines, including IL-3, GCSF, GMCSF and FLT3 ligand. It suppresses SCF-stimulated erythrocyte proliferation.

Storage

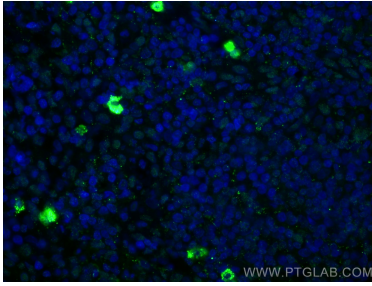
Storage:
Store at -80°C.

Storage Buffer:
PBS Only

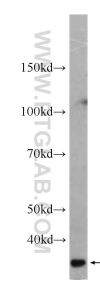
For technical support and original validation data for this product please contact:
T: 1 (888) 4PTGLAB (1-888-478-4522) (toll free in USA), or 1(312) 455-8498 (outside USA)
E: proteintech@ptglab.com
W: ptglab.com

This product is exclusively available under Proteintech Group brand and is not available to purchase from any other manufacturer.

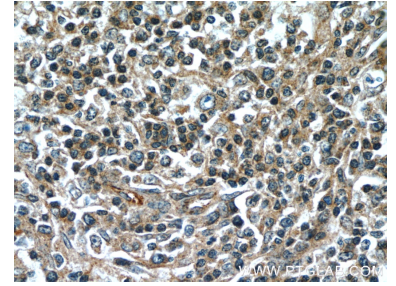
Selected Validation Data



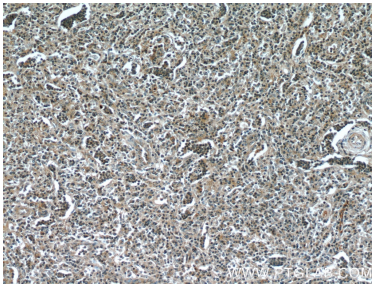
Immunofluorescent analysis of (4% PFA) fixed human lymphoma tissue using SCGF antibody (60295-1-Ig, Clone: 4H11E4) at dilution of 1:400 and CoraLite®488-Conjugated AffiniPure Goat Anti-Mouse IgG(H+L). This data was developed using the same antibody clone with 60295-1-PBS in a different storage buffer formulation.



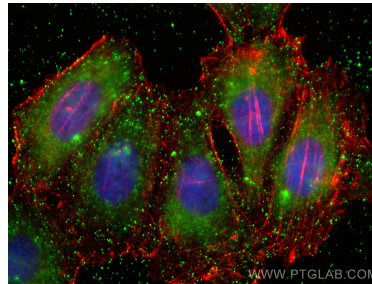
human heart tissue were subjected to SDS PAGE followed by western blot with 60295-1-Ig (CLEC11A Antibody) at dilution of 1:1000 incubated at room temperature for 1.5 hours. This data was developed using the same antibody clone with 60295-1-PBS in a different storage buffer formulation.



Immunohistochemical analysis of paraffin-embedded human lymphoma tissue slide using 60295-1-Ig (CLEC11A antibody) at dilution of 1:50 (under 40x lens). This data was developed using the same antibody clone with 60295-1-PBS in a different storage buffer formulation.



Immunohistochemical analysis of paraffin-embedded human lymphoma tissue slide using 60295-1-Ig (CLEC11A antibody) at dilution of 1:50 (under 10x lens). This data was developed using the same antibody clone with 60295-1-PBS in a different storage buffer formulation.



Immunofluorescent analysis of (-20°C Ethanol) fixed HepG2 cells using SCGF antibody (60295-1-Ig, Clone: 4H11E4) at dilution of 1:800 and CoraLite®488-Conjugated AffiniPure Goat Anti-Mouse IgG(H+L), CL594-phalloidin (red). This data was developed using the same antibody clone with 60295-1-PBS in a different storage buffer formulation.