

For Research Use Only

IL-1F7/IL-37 Monoclonal antibody

Catalog Number: 60296-1-Ig

Featured Product

7 Publications



Basic Information

Catalog Number:

60296-1-Ig

GenBank Accession Number:

BC020637

Purification Method:

Protein G purification

Size:

150ul, Concentration: 1000 µg/ml by Nanodrop and 767 µg/ml by Bradford method using BSA as the standard;

GeneID (NCBI):

27178

CloneNo.:

7F1A1

Source:

Mouse

UNIPROT ID:

Q9NZH6

Recommended Dilutions:

IHC 1:50-1:500

Isotype:

IgG2a

Full Name:

interleukin 1 family, member 7 (zeta)

Calculated MW:

218 aa, 24 kDa

Immunogen Catalog Number:

AG2441

Applications

Tested Applications:

IHC, ELISA

Positive Controls:

IHC : human colon tissue, human breast cancer tissue

Cited Applications:

IHC, WB

Species Specificity:

human

Cited Species:

human, mouse

Note-IHC: suggested antigen retrieval with TE buffer pH 9.0; (*) Alternatively, antigen retrieval may be performed with citrate buffer pH 6.0

Notable Publications

Author	Pubmed ID	Journal	Application
Nan Ma	36166295	JCI Insight	IHC
Jingjing Yan	27665946	Cell Mol Immunol	WB
Lin Lin	27225603	Sci Rep	WB

Storage

Storage:

Store at -20°C. Stable for one year after shipment.

Storage Buffer:

PBS with 0.02% sodium azide and 50% glycerol pH 7.3.

Aliquoting is unnecessary for -20°C storage

*** 20ul sizes contain 0.1% BSA

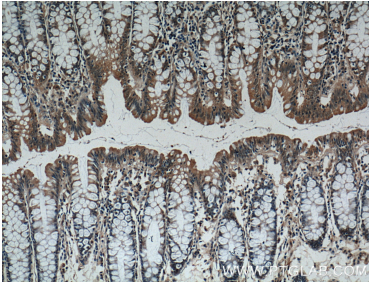
For technical support and original validation data for this product please contact:

T: 1 (888) 4PTGLAB (1-888-478-4522) (toll free in USA), or 1(312) 455-8498 (outside USA)

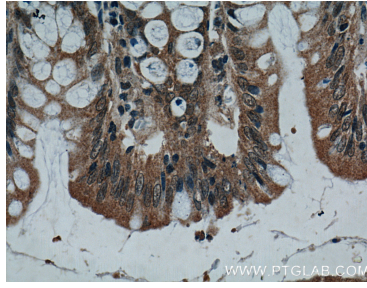
E: proteintech@ptglab.com
W: ptglab.com

This product is exclusively available under Proteintech Group brand and is not available to purchase from any other manufacturer.

Selected Validation Data



Immunohistochemical analysis of paraffin-embedded human colon tissue slide using 60296-1-Ig (IL37 antibody at dilution of 1:200 (under 10x lens).



Immunohistochemical analysis of paraffin-embedded human colon tissue slide using 60296-1-Ig (IL37 antibody at dilution of 1:200 (under 40x lens).