

For Research Use Only

# PTEN Monoclonal antibody, PBS Only (Detector)

Catalog Number: 60300-3-PBS



## Basic Information

<b>Catalog Number:</b> 60300-3-PBS	<b>GenBank Accession Number:</b> BC005821	<b>Purification Method:</b> Protein A purification
<b>Size:</b> 100ug , Concentration: 1 mg/ml by Nanodrop;	<b>GeneID (NCBI):</b> 5728	<b>CloneNo.:</b> 4D8G9
<b>Source:</b> Mouse	<b>UNIPROT ID:</b> P60484	
<b>Isotype:</b> IgG2b	<b>Full Name:</b> phosphatase and tensin homolog	
<b>Immunogen Catalog Number:</b> AG17274	<b>Calculated MW:</b> 47 kDa	
	<b>Observed MW:</b> 55 kDa	

## Applications

**Tested Applications:**  
WB, Cytometric bead array, Indirect ELISA

**Species Specificity:**  
human, mouse

## Product Information

60300-3-PBS targets PTEN as part of a matched antibody pair:

MP50170-1: 60300-2-PBS capture and 60300-3-PBS detection (validated in Cytometric bead array)

Unconjugated mouse monoclonal antibody pair in PBS only (BSA and azide free) storage buffer at a concentration of 1 mg/mL, ready for conjugation.

This conjugation ready format makes antibodies ideal for use in many applications including: ELISAs, multiplex assays requiring matched pairs, mass cytometry, and multiplex imaging applications. Antibody use should be optimized by the end user for each application and assay.

## Background Information

PTEN (also designated MMAC1), products of tumor suppressor genes, are found deleted in most human gliomas. The PTEN genes are also mutated in many other tumors, such as brain, breast, kidney and prostate cancers. PTEN is a protein tyrosine phosphatase that may terminate the signaling transduction pathways mediated by PI 3-kinase/Akt. PTEN has an apparent molecular weight of 55 kDa.

## Storage

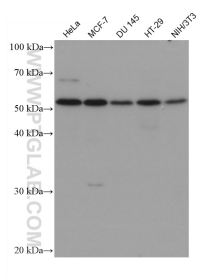
**Storage:**  
Store at -80°C.

**Storage Buffer:**  
PBS only, pH7.3

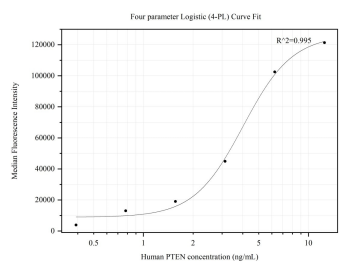
For technical support and original validation data for this product please contact:  
T: 1 (888) 4PTGLAB (1-888-478-4522) (toll free in USA), or 1(312) 455-8498 (outside USA)  
E: [proteintech@ptglab.com](mailto:proteintech@ptglab.com)  
W: [ptglab.com](http://ptglab.com)

This product is exclusively available under Proteintech Group brand and is not available to purchase from any other manufacturer.

## Selected Validation Data



Various lysates were subjected to SDS PAGE followed by western blot with 60300-3-Ig (PTEN antibody) at dilution of 1:5000 incubated at room temperature for 1.5 hours. This data was developed using the same antibody clone with 60300-3-PBS in a different storage buffer formulation.



Cytometric bead array standard curve of MP50170-1, PTEN Monoclonal Matched Antibody Pair, PBS Only. Capture antibody: 60300-2-PBS. Detection antibody: 60300-3-PBS. Standard:Ag17274. Range: 0.391-12.5 ng/mL.