

For Research Use Only

SGTA Monoclonal antibody, PBS Only

Catalog Number: 60305-1-PBS



Basic Information

Catalog Number:

60305-1-PBS

Size:

100ug , Concentration: 1 mg/ml by Nanodrop;

Source:

Mouse

Isotype:

IgG2b

Immunogen Catalog Number:

AG1475

GenBank Accession Number:

BC008885

GeneID (NCBI):

6449

UNIPROT ID:

O43765

Full Name:

small glutamine-rich tetratricopeptide repeat (TPR)-containing, alpha

Calculated MW:

34 kDa

Observed MW:

34-37 kDa

Purification Method:

Protein A purification

CloneNo.:

3B10B11

Applications

Tested Applications:

WB, IF, IHC, Indirect ELISA

Species Specificity:

human, mouse, rat

Background Information

Small glutamine-rich tetratricopeptide repeat-containing protein alpha (SGTA) is a steroid receptor molecular co-chaperone critical in a range of biological processes, including viral infection, cell division, mitosis, and cell cycle checkpoint activation. Overexpression of SGTA has been found in various cancers, including prostate/ovary/testis/liver/lung cancer.

Storage

Storage:

Store at -80°C.

Storage Buffer:

PBS Only

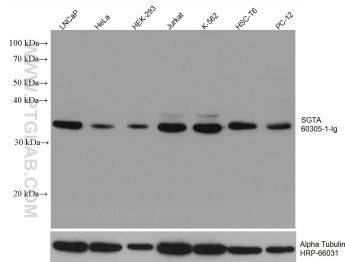
For technical support and original validation data for this product please contact:

T: 1 (888) 4PTGLAB (1-888-478-4522) (toll free in USA), or 1(312) 455-8498 (outside USA)

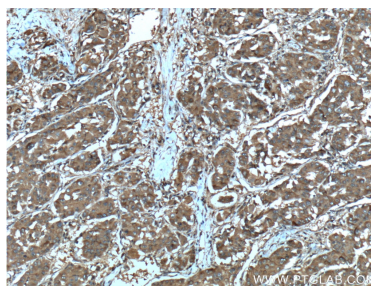
E: proteintech@ptglab.com
W: ptglab.com

This product is exclusively available under Proteintech Group brand and is not available to purchase from any other manufacturer.

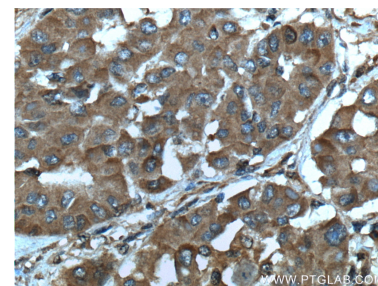
Selected Validation Data



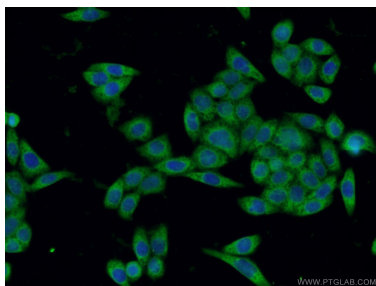
Various lysates were subjected to SDS PAGE followed by western blot with 60305-1-Ig (SGTA antibody) at dilution of 1:40000 incubated at room temperature for 1.5 hours. The membrane was stripped and reblotted with HRP-conjugated Alpha Tubulin Monoclonal antibody (HRP-66031) as loading control. This data was developed using the same antibody clone with 60305-1-PBS in a different storage buffer formulation.



Immunohistochemical analysis of paraffin-embedded human liver cancer tissue slide using 60305-1-Ig (SGTA Antibody) at dilution of 1:200 (under 10x lens). This data was developed using the same antibody clone with 60305-1-PBS in a different storage buffer formulation.



Immunohistochemical analysis of paraffin-embedded human liver cancer tissue slide using 60305-1-Ig (SGTA Antibody) at dilution of 1:200 (under 40x lens). This data was developed using the same antibody clone with 60305-1-PBS in a different storage buffer formulation.



Immunofluorescent analysis of HeLa cells using 60305-1-Ig (SGTA antibody) at dilution of 1:50 and Alexa Fluor 488-conjugated AffiniPure Goat Anti-Mouse IgG (H+L). This data was developed using the same antibody clone with 60305-1-PBS in a different storage buffer formulation.