

For Research Use Only

HER2/ErbB2 Monoclonal antibody, PBS Only



Catalog Number: 60311-1-PBS

Basic Information

Catalog Number: 60311-1-PBS	GenBank Accession Number: BC156755	Purification Method: Protein A purification
Size: 100ug , Concentration: 1 mg/ml by Nanodrop;	GeneID (NCBI): 2064	CloneNo.: 1B12A7
Source: Mouse	UNIPROT ID: P04626	
Isotype: IgG2b	Full Name: v-erb-b2 erythroblastic Leukemia viral oncogene homolog 2, neuro/glioblastoma derived oncogene homolog (avian)	
Immunogen Catalog Number: AG16463	Calculated MW: 1255 aa, 138 kDa	

Applications

Tested Applications:
IF, FC, IHC, ELISA

Species Specificity:
human

Background Information

HER2, also known as ErbB2 and Neu, is a 185-kDa transmembrane glycoprotein that is a member of the epidermal growth factor (EGF) receptor family of receptor tyrosine kinases. It has no ligand binding domain of its own and therefore cannot bind growth factors. However, it does bind tightly to other ligand-bound EGF receptor family members to form a heterodimer, stabilizing ligand binding and enhancing kinase-mediated activation of downstream signalling pathways, such as those involving mitogen-activated protein kinase and phosphatidylinositol-3 kinase. Amplification and/or overexpression of HER2 have been reported in numerous cancers, including breast and ovarian tumors. HER2 is a therapeutic target for the treatment of breast cancer and other carcinomas.

Storage

Storage:
Store at -20°C. Stable for one year after shipment.

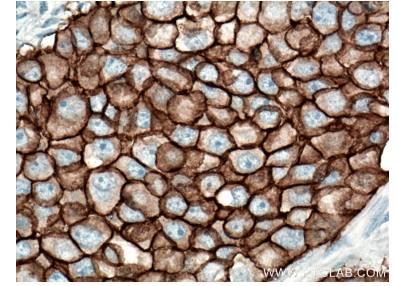
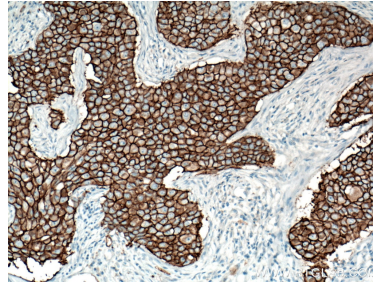
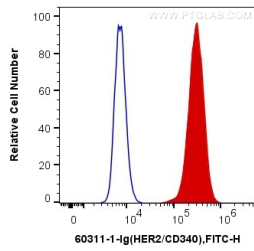
Storage Buffer:
PBS only

Aliquoting is unnecessary for -20°C storage

For technical support and original validation data for this product please contact:
T: 1 (888) 4PTGLAB (1-888-478-4522) (toll free in USA), or 1(312) 455-8498 (outside USA) E: proteintech@ptglab.com
W: ptglab.com

This product is exclusively available under Proteintech Group brand and is not available to purchase from any other manufacturer.

Selected Validation Data

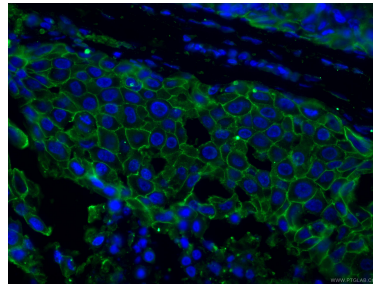
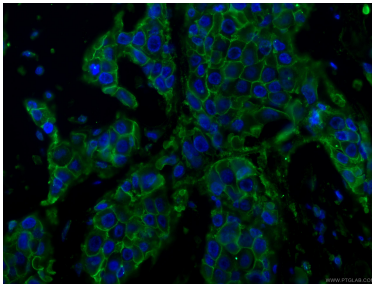


1X10⁶ SK-BR-3 cells were intracellularly stained with 0.4 ug Anti-Human HER2/ErbB2 (60311-1-Ig, Clone:1B12A7) and CoraLite®488-Conjugated AffiniPure Goat Anti-Mouse IgG(H+L) at dilution 1:1000 (red), or 0.4 ug Mouse IgG2b Isotype Control (66360-3-Ig, Clone: K11B8C4B5) (blue). Cells were fixed with 4% PFA and permeabilized with Flow Cytometry Perm Buffer (PF00011-C). This data was developed using the same antibody clone with 60311-1-PBS in a



Immunohistochemical analysis of paraffin-embedded human breast cancer tissue slide using 60311-1-Ig (HER2/ErbB2 antibody) at dilution of 1:1600 (under 10x lens). Heat mediated antigen retrieval with Tris-EDTA buffer (pH 9.0). This data was developed using the same antibody clone with 60311-1-PBS in a different storage buffer formulation.

Immunohistochemical analysis of paraffin-embedded human breast cancer tissue slide using 60311-1-Ig (HER2/ErbB2 antibody) at dilution of 1:1600 (under 40x lens). Heat mediated antigen retrieval with Tris-EDTA buffer (pH 9.0). This data was developed using the same antibody clone with 60311-1-PBS in a different storage buffer formulation.



Immunofluorescent analysis of (4% PFA) fixed human breast cancer tissue using 60311-1-Ig (HER2/ErbB2 antibody), at dilution of 1:200 and CoraLite®488-Conjugated AffiniPure Goat Anti-Mouse IgG(H+L). This data was developed using the same antibody clone with 60311-1-PBS in a different storage buffer formulation.

Immunofluorescent analysis of (4% PFA) fixed human breast cancer tissue using 60311-1-Ig (HER2/ErbB2 antibody), at dilution of 1:200 and CoraLite®488-Conjugated AffiniPure Goat Anti-Mouse IgG(H+L). This data was developed using the same antibody clone with 60311-1-PBS in a different storage buffer formulation.