

For Research Use Only

CDK2 Monoclonal antibody, PBS Only

Catalog Number: 60312-1-PBS



Basic Information

Catalog Number:

60312-1-PBS

Size:

100ug, Concentration: 1 mg/ml by Nanodrop;

Source:

Mouse

Isotype:

IgM

Immunogen Catalog Number:

AG21310

GenBank Accession Number:

BC003065

GeneID (NCBI):

1017

UNIPROT ID:

P24941

Full Name:

cyclin-dependent kinase 2

Calculated MW:

33 kDa

Observed MW:

30 kDa

Purification Method:

Caprylic acid/ammonium sulfate precipitation

CloneNo.:

4E2E10

Applications

Tested Applications:

WB, IHC, IF/ICC, FC (Intra), ELISA

Species Specificity:

human

Background Information

CDK2(Cyclin-dependent kinase 2) is also named as CDKN2 and belongs to the protein kinase superfamily,CMGC Ser/Thr protein kinase family, CDC2/CDKX subfamily.It is involved in the control of the cell cycle; essential for meiosis, but dispensable for mitosis.It has 2 isoforms produced by alternative splicing.

Storage

Storage:

Store at -80°C.

Storage Buffer:

PBS only, pH7.3

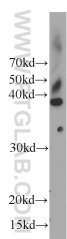
For technical support and original validation data for this product please contact:

T: 1 (888) 4PTGLAB (1-888-478-4522) (toll free in USA), or 1(312) 455-8498 (outside USA)

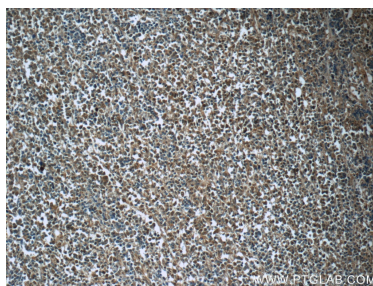
E: proteintech@ptglab.com
W: ptglab.com

This product is exclusively available under Proteintech Group brand and is not available to purchase from any other manufacturer.

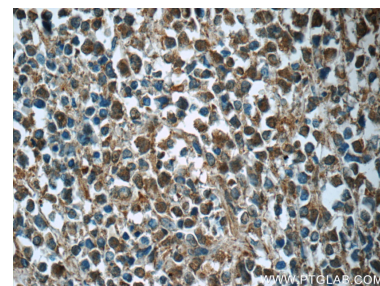
Selected Validation Data



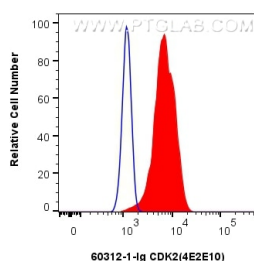
K-562 cells were subjected to SDS PAGE followed by western blot with 60312-1-Ig (CDK2 Antibody) at dilution of 1:1000 incubated at room temperature for 1.5 hours. This data was developed using the same antibody clone with 60312-1-PBS in a different storage buffer formulation.



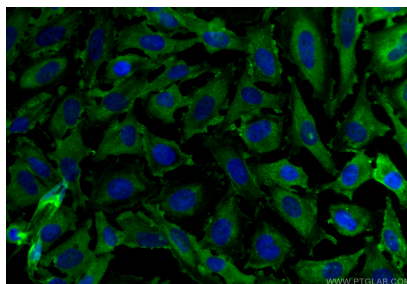
Immunohistochemical analysis of paraffin-embedded human lymphoma tissue slide using 60312-1-Ig (CDK2 Antibody) at dilution of 1:50 (under 10x lens). This data was developed using the same antibody clone with 60312-1-PBS in a different storage buffer formulation.



Immunohistochemical analysis of paraffin-embedded human lymphoma tissue slide using 60312-1-Ig (CDK2 Antibody) at dilution of 1:50 (under 40x lens). This data was developed using the same antibody clone with 60312-1-PBS in a different storage buffer formulation.



1×10^6 HepG2 cells were intracellularly stained with 0.25 μ g CDK2 Monoclonal antibody (60312-1-Ig, Clone:4E2E10) and CoraLite®488-Conjugated Goat Anti-Mouse IgG(H+L) (SA00013-1)(red), or 0.25 μ g Isotype Control (blue). Cells were fixed with 4% PFA and permeabilized with Flow Cytometry Perm Buffer (PF00011-C). This data was developed using the same antibody clone with 60312-1-PBS in a different storage buffer formulation.



Immunofluorescent analysis of (4% PFA) fixed HeLa cells using CDK2 antibody (60312-1-Ig, Clone: 4E2E10) at dilution of 1:800 and CoraLite®488-Conjugated Goat Anti-Mouse IgG(H+L) (SA00013-1). This data was developed using the same antibody clone with 60312-1-PBS in a different storage buffer formulation.