

For Research Use Only

CREST Monoclonal antibody

Catalog Number: 60314-1-Ig



Basic Information

Catalog Number:

60314-1-Ig

GenBank Accession Number:

BC034494

Purification Method:

Protein G purification

Size:

150ul, Concentration: 1500 ug/ml by Nanodrop and 1000 ug/ml by Bradford method using BSA as the standard;

GeneID (NCBI):

26039

CloneNo.:

3D5D10

UNIPROT ID:

O75177

Recommended Dilutions:

WB 1:1000-1:6000

Source:

Mouse

Full Name:

synovial sarcoma translocation gene on chromosome 18-like 1

Isotype:

IgG1

Calculated MW:

396 aa, 43 kDa

Immunogen Catalog Number:

AG3119

Observed MW:

50 kDa

Applications

Tested Applications:

WB, ELISA

Positive Controls:

WB: NIH/3T3 cells, COLO 320 cells, HSC-T6 cells, RAW 264.7 cells, MCF-7 cells

Species Specificity:

human, rat, mouse

Background Information

SS18-like 1 (SS18L1) is a transcriptional activator that is required for calcium-dependent dendritic growth and branching in cortical neurons. It's also a nuclear protein interacts with CREB-binding protein and expressed in the developing brain. It helps regulate neuronal morphogenesis in calcium-dependent manner. The N-terminal domain of SS18L1 is required for suppressing transactivation in the basal state, while the C-terminal domain is required for calcium-induced transactivation. It's part of the CREST-BRG1 complex, a multiprotein complex that regulates promoter activation by orchestrating a calcium-dependent release of a repressor complex and a recruitment of an activator complex. This complex also binds to the NR2B promoter, and activity-dependent induction of NR2B expression involves a release of HDAC1 and recruitment of CREBBP. The calculated molecular weight of CREST is about 43 kDa, but the modified of CREST protein is 55 kDa (PMID: 25888396).

Storage

Storage:

Store at -20°C. Stable for one year after shipment.

Storage Buffer:

PBS with 0.02% sodium azide and 50% glycerol pH 7.3.

Aliquoting is unnecessary for -20°C storage

*** 20ul sizes contain 0.1% BSA

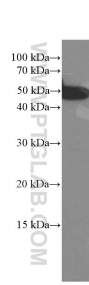
For technical support and original validation data for this product please contact:

T: 1 (888) 4PTGLAB (1-888-478-4522) (toll free in USA), or 1(312) 455-8498 (outside USA)

E: proteintech@ptglab.com
W: ptglab.com

This product is exclusively available under Proteintech Group brand and is not available to purchase from any other manufacturer.

Selected Validation Data



NIH/3T3 cells were subjected to SDS PAGE followed by western blot with 60314-1-Ig (CREST antibody) at dilution of 1:3000 incubated at room temperature for 1.5 hours.