

For Research Use Only

GOT1 Monoclonal antibody

Catalog Number: 60317-1-Ig

Featured Product

4 Publications



Basic Information

Catalog Number:

60317-1-Ig

Size:

150ul, Concentration: 1100 ug/ml by Nanodrop and 500 ug/ml by Bradford method using BSA as the standard;

Source:

Mouse

Isotype:

IgG1

Immunogen Catalog Number:

AG7012

GenBank Accession Number:

BC000498

GeneID (NCBI):

2805

UNIPROT ID:

P17174

Full Name:

glutamic-oxaloacetic transaminase 1, soluble (aspartate aminotransferase 1)

Calculated MW:

46 kDa

Observed MW:

40-46 kDa

Purification Method:

Protein G purification

CloneNo.:

5A12E10

Recommended Dilutions:

WB: 1:2000-1:10000

IHC: 1:20-1:200

IF/ICC: 1:200-1:800

Applications

Tested Applications:

WB, IHC, IF/ICC, ELISA

Cited Applications:

WB, IF, IP

Species Specificity:

human, mouse, rat, chicken

Cited Species:

human, mouse

Note-IHC: suggested antigen retrieval with TE buffer pH 9.0; (*) Alternatively, antigen retrieval may be performed with citrate buffer pH 6.0

Positive Controls:

WB: LNCaP cells, rat brain tissue, rat heart tissue, mouse brain tissue, K-562 cells, chicken brain, chicken heart

IHC: human liver cancer tissue,

IF/ICC: HepG2 cells,

Background Information

Glutamate oxaloacetate transaminase 1 (GOT1) catalyzes the reversible reaction of L-aspartate and alpha-ketoglutarate into oxaloacetate and L-glutamate and plays a key role in carbon and nitrogen metabolism. GOT1 can potentially control the intracellular levels of reactive oxygen species (ROS) through NADPH synthesis and enhances tumor growth. GOT1 expression correlates with the growth of several tumors.

Notable Publications

Author	Pubmed ID	Journal	Application
Wenzhu Li	28544376	J Cell Mol Med	WB
Han Zhang	39892500	Free Radic Biol Med	WB
Jie He	39834177	Antioxid Redox Signal	WB

Storage

Storage:

Store at -20°C. Stable for one year after shipment.

Storage Buffer:

PBS with 0.02% sodium azide and 50% glycerol, pH7.3

Aliquoting is unnecessary for -20°C storage

*** 20ul sizes contain 0.1% BSA

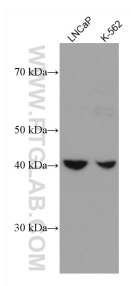
For technical support and original validation data for this product please contact:

T: 1 (888) 4PTGLAB (1-888-478-4522) (toll free in USA), or 1(312) 455-8498 (outside USA)

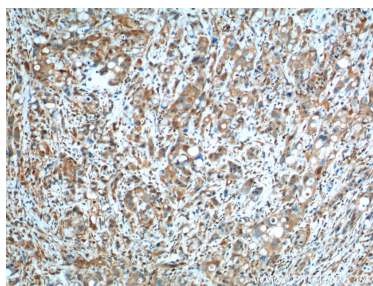
E: proteintech@ptglab.com
W: ptglab.com

This product is exclusively available under Proteintech Group brand and is not available to purchase from any other manufacturer.

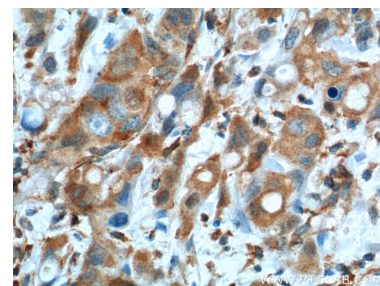
Selected Validation Data



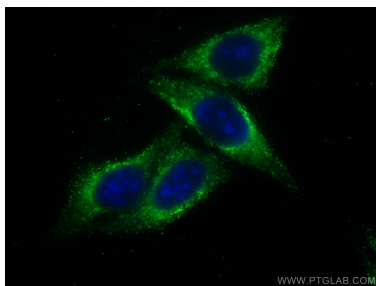
Various lysates were subjected to SDS PAGE followed by western blot with 60317-1-Ig (GOT1 antibody) at dilution of 1:5000 incubated at room temperature for 1.5 hours.



Immunohistochemical analysis of paraffin-embedded human liver cancer tissue slide using 60317-1-Ig (GOT1 Antibody) at dilution of 1:200 (under 10x lens). Heat mediated antigen retrieval with Tris-EDTA buffer (pH 9.0).



Immunohistochemical analysis of paraffin-embedded human liver cancer tissue slide using 60317-1-Ig (GOT1 Antibody) at dilution of 1:200 (under 40x lens). Heat mediated antigen retrieval with Tris-EDTA buffer (pH 9.0).



Immunofluorescent analysis of (-20°C Ethanol) fixed HepG2 cells using GOT1 antibody (60317-1-Ig, Clone: 5A12E10) at dilution of 1:400 and CoraLite®488-Conjugated Goat Anti-Mouse IgG(H+L).