

For Research Use Only

IL-1F10 Monoclonal antibody

Catalog Number: 60319-1-Ig



Basic Information

Catalog Number: 60319-1-Ig	GenBank Accession Number: BC103966	Purification Method: Protein G purification
Size: 150ul , Concentration: 4900 ug/ml by Nanodrop and 2000 ug/ml by Bradford method using BSA as the standard;	GeneID (NCBI): 84639	CloneNo.: 5B2F5
Source: Mouse	UNIPROT ID: Q8WWZ1	Recommended Dilutions: WB 1:500-1:2000
Isotype: IgG1	Full Name: interleukin 1 family, member 10 (theta)	
Immunogen Catalog Number: AG17250	Calculated MW: 152 aa, 17 kDa	

Applications

Tested Applications: WB, FC (Intra), ELISA	Positive Controls:
Species Specificity: human	WB : Recombinant protein, FC (Intra) : U-937 cells,

Background Information

IL1F10 is a member of the interleukin 1 cytokine family. This cytokine is thought to participate in a network of interleukin 1 family members to regulate adapted and innate immune responses.

Storage

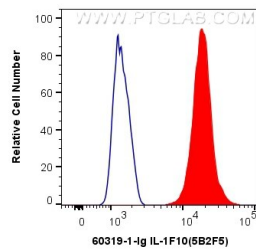
Storage:
Store at -20°C. Stable for one year after shipment.
Storage Buffer:
PBS with 0.02% sodium azide and 50% glycerol, pH7.3
Aliquoting is unnecessary for -20°C storage

*** 20ul sizes contain 0.1% BSA

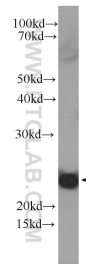
For technical support and original validation data for this product please contact:
T: 1 (888) 4PTGLAB (1-888-478-4522) (toll free in USA), or 1(312) 455-8498 (outside USA)
E: proteintech@ptglab.com
W: ptglab.com

This product is exclusively available under Proteintech Group brand and is not available to purchase from any other manufacturer.

Selected Validation Data



1X10⁶ U-937 cells were intracellularly stained with 0.4 ug Anti-Human IL-1F10 (60319-1-Ig, Clone:5B2F5) and CoraLite®488-Conjugated AffiniPure Goat Anti-Mouse IgG(H+L) at dilution 1:1000 (red), or 0.4 ug Control Antibody. Cells were fixed with 4% PFA and permeabilized with Flow Cytometry Perm Buffer (PF00011-C).



Recombinant protein were subjected to SDS PAGE followed by western blot with 60319-1-Ig (IL1F10 Antibody) at dilution of 1:1000 incubated at room temperature for 1.5 hours.