

For Research Use Only

IL-1F10 Monoclonal antibody, PBS Only



Catalog Number: 60319-1-PBS

Basic Information

Catalog Number: 60319-1-PBS	GenBank Accession Number: BC103966	Purification Method: Protein A purification
Size: 100ug , Concentration: 1mg/ml by Nanodrop;	GeneID (NCBI): 84639	CloneNo.: 5B2F5
Source: Mouse	UNIPROT ID: Q8WWZ1	
Isotype: IgG1	Full Name: interleukin 1 family, member 10 (theta)	
Immunogen Catalog Number: AG17250	Calculated MW: 152 aa, 17 kDa	

Applications

Tested Applications:
WB, Indirect ELISA

Species Specificity:
human

Background Information

IL1F10 is a member of the interleukin 1 cytokine family. This cytokine is thought to participate in a network of interleukin 1 family members to regulate adapted and innate immune responses.

Storage

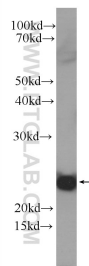
Storage:
Store at -80°C.

Storage Buffer:
PBS Only

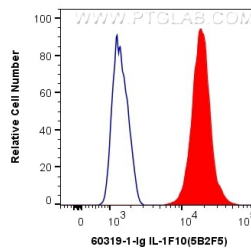
For technical support and original validation data for this product please contact:
T: 1 (888) 4PTGLAB (1-888-478-4522) (toll free in USA), or 1(312) 455-8498 (outside USA)
E: proteintech@ptglab.com
W: ptglab.com

This product is exclusively available under Proteintech Group brand and is not available to purchase from any other manufacturer.

Selected Validation Data



Recombinant protein were subjected to SDS PAGE followed by western blot with 60319-1-Ig (IL1F10 Antibody) at dilution of 1:1000 incubated at room temperature for 1.5 hours. This data was developed using the same antibody clone with 60319-1-PBS in a different storage buffer formulation.



1X10⁶ U-937 cells were intracellularly stained with 0.4 ug Anti-Human IL-1F10 (60319-1-Ig, Clone:5B2F5) and CoraLite®488-Conjugated AffiniPure Goat Anti-Mouse IgG(H+L) at dilution 1:1000 (red), or 0.4 ug Control Antibody. Cells were fixed with 4% PFA and permeabilized with Flow Cytometry Perm Buffer (PF00011-C). This data was developed using the same antibody clone with 60319-1-PBS in a different storage buffer formulation.