

For Research Use Only

CD39/ENTPD1 Monoclonal antibody, PBS Only



Catalog Number: 60323-1-PBS

Basic Information

Catalog Number: 60323-1-PBS	GenBank Accession Number: BC047664	Purification Method: Protein A purification
Size: 100ug , Concentration: 1mg/ml by Nanodrop;	GeneID (NCBI): 953	CloneNo.: 2D2H6
Source: Mouse	UNIPROT ID: P49961	
Isotype: IgG2a	Full Name: ectonucleoside triphosphate diphosphohydrolase 1	
Immunogen Catalog Number: AG6165	Calculated MW: 58 kDa	
	Observed MW: 54 kDa	

Applications

Tested Applications:
WB, IF, IHC, ELISA

Species Specificity:
human

Background Information

ENTPD1(Ectonucleoside triphosphate diphosphohydrolase 1) is also named as CD39, NTPDase 1, Ecto-ATPDase 1 and belongs to the GDA1/CD39 NTPase family. In the nervous system, it can hydrolyze ATP and other nucleotides to regulate purinergic neurotransmission. It is a noncovalent tetrameric protein and that detergent inhibition of enzymatic activity is caused by dissociation of ectoapyrase tetramers into monomers(PMID: 9733785). And it is a 70- to 100-kDa protein that is heavily N-glycosylated(PMID:7930580). This protein has 6 glycosylation sites and 3 isoforms(58 kDa, 59 kDa and 34 kDa) produced by alternative splicing. The soluble isoform of CD39(38-478 amino acid) locates to the extracellular part and 60323-1-Ig can recognize the soluble form of CD39 (38-478aa) molecule.

Storage

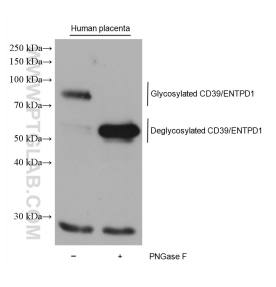
Storage:
Store at -80°C.

Storage Buffer:
PBS Only

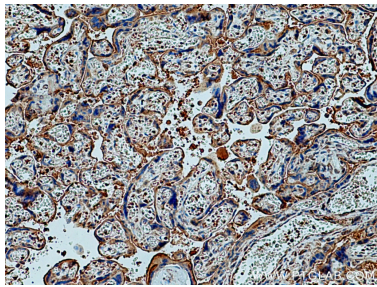
For technical support and original validation data for this product please contact:
T: 1 (888) 4PTGLAB (1-888-478-4522) (toll free in USA), or 1(312) 455-8498 (outside USA)
E: proteintech@ptglab.com
W: ptglab.com

This product is exclusively available under Proteintech Group brand and is not available to purchase from any other manufacturer.

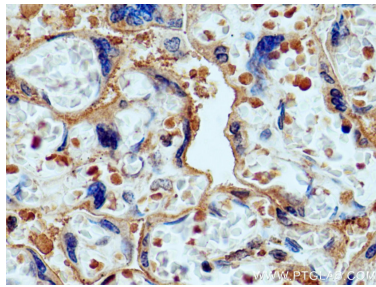
Selected Validation Data



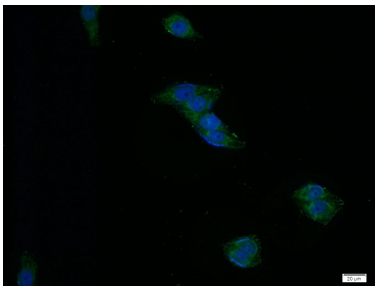
Various lysates were subjected to SDS PAGE followed by western blot with 60323-1-Ig (CD39/ENTPD1 antibody) at dilution of 1:10000 incubated at room temperature for 1.5 hours. This data was developed using the same antibody clone with 60323-1-PBS in a different storage buffer formulation.



Immunohistochemical analysis of paraffin-embedded human placenta tissue slide using 60323-1-Ig (CD39/ENTPD1 antibody) at dilution of 1:100 (under 10x lens). Heat mediated antigen retrieval with Tris-EDTA buffer (pH 9.0). This data was developed using the same antibody clone with 60323-1-PBS in a different storage buffer formulation.



Immunohistochemical analysis of paraffin-embedded human placenta tissue slide using 60323-1-Ig (CD39/ENTPD1 antibody) at dilution of 1:100 (under 40x lens). Heat mediated antigen retrieval with Tris-EDTA buffer (pH 9.0). This data was developed using the same antibody clone with 60323-1-PBS in a different storage buffer formulation.



Immunofluorescent analysis of HeLa cells using 60323-1-Ig (ENTPD1 antibody) at dilution of 1:50 and Alexa Fluor 488-conjugated AffiniPure Goat Anti-Mouse IgG (H+L). This data was developed using the same antibody clone with 60323-1-PBS in a different storage buffer formulation.