

For Research Use Only

# Bestrophin-1 Monoclonal antibody

Catalog Number: 60326-1-Ig **1 Publications**



## Basic Information

<b>Catalog Number:</b> 60326-1-Ig	<b>GenBank Accession Number:</b> BC015220	<b>Purification Method:</b> Protein G purification
<b>Size:</b> 150ul , Concentration: 780 µg/ml by Bradford method using BSA as the standard;	<b>GeneID (NCBI):</b> 7439	<b>CloneNo.:</b> 4D5F1
<b>Source:</b> Mouse	<b>Full Name:</b> bestrophin 1	<b>Recommended Dilutions:</b> WB 1:500-1:2000 IF 1:200-1:800
<b>Isotype:</b> IgG1	<b>Calculated MW:</b> 585 aa, 68 kDa	
<b>Immunogen Catalog Number:</b> AG15129	<b>Observed MW:</b> 68 kDa	

## Applications

<b>Tested Applications:</b> IF, WB, ELISA	<b>Positive Controls:</b> WB : Y79 cells, Transfected HEK-293 cells
<b>Cited Applications:</b> IF	<b>IF :</b> Y79 cells,
<b>Species Specificity:</b> human	
<b>Cited Species:</b> human	

## Background Information

Bestrophin-1 (BEST1) is a 68 kDa transmembrane protein which belongs to the bestrophin family of anion channels. It is predominantly expressed in the basolateral membrane of the retinal pigment epithelium. Studies show that bestrophin 1 functions as a Ca(2+)-dependent Cl(-) channel and modulator of voltage-dependent L-type Ca(2+) channels. It may also contribute to the basolateral cell conductance in airway epithelial cells. This protein is encoded by the VMD2 gene. Mutations in VMD2 can lead to different types of retinal or macular degenerations, including Best vitelliform macular dystrophy (BMD), autosomal recessive bestrophinopathy (ARB), autosomal dominant vitreoretinopathopathy (ADVIRC) and adult-onset vitelliform macular dystrophy (AVMD).

## Notable Publications

Author	Pubmed ID	Journal	Application
Xiaoman Zhu	36096985	Cell Death Dis	IF

## Storage

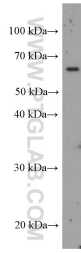
**Storage:**  
Store at -20°C. Stable for one year after shipment.  
**Storage Buffer:**  
PBS with 0.02% sodium azide and 50% glycerol pH 7.3.  
Aliquoting is unnecessary for -20°C storage

\*\*\* 20ul sizes contain 0.1% BSA

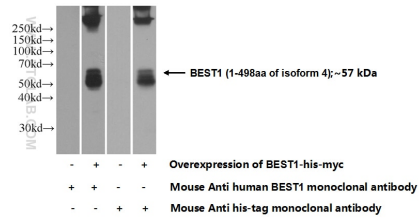
For technical support and original validation data for this product please contact:  
T: 1 (888) 4PTGLAB (1-888-478-4522) (toll free in USA), or 1(312) 455-8498 (outside USA) E: proteintech@ptglab.com W: ptglab.com

This product is exclusively available under Proteintech Group brand and is not available to purchase from any other manufacturer.

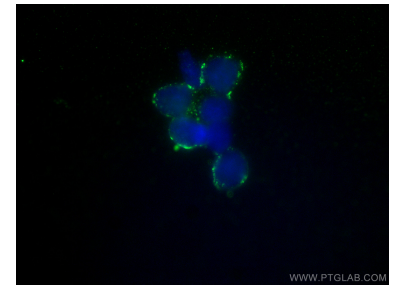
## Selected Validation Data



Y79 cells were subjected to SDS PAGE followed by western blot with 60326-1-Ig (Bestrophin-1 antibody) at dilution of 1:1000 incubated at room temperature for 1.5 hours.



WB result of Bestrophin-1 antibody (60326-1-Ig; 1:1000; room temperature for 1.5 hours) with negative control and Bestrophin-1 overexpressed Transfected HEK-293 cells.



Immunofluorescent analysis of (4% PFA) fixed Y79 cells using Bestrophin-1 antibody (60326-1-Ig, Clone: 4D5F1) at dilution of 1:400 and CoraLite®488-Conjugated AffiniPure Goat Anti-Mouse IgG(H+L).