

For Research Use Only

# Bestrophin-1 Monoclonal antibody, PBS Only



Catalog Number: 60326-1-PBS

## Basic Information

<b>Catalog Number:</b> 60326-1-PBS	<b>GenBank Accession Number:</b> BC015220	<b>Purification Method:</b> Protein G purification
<b>Size:</b> 100ug , Concentration: 1 mg/ml by Nanodrop;	<b>GeneID (NCBI):</b> 7439	<b>CloneNo.:</b> 4D5F1
<b>Source:</b> Mouse	<b>UNIPROT ID:</b> O76090	
<b>Isotype:</b> IgG1	<b>Full Name:</b> bestrophin 1	
<b>Immunogen Catalog Number:</b> AG15129	<b>Calculated MW:</b> 585 aa, 68 kDa	
	<b>Observed MW:</b> 68 kDa	

## Applications

**Tested Applications:**  
WB, IF, Indirect ELISA

**Species Specificity:**  
human

## Background Information

Bestrophin-1 (BEST1) is a 68 kDa transmembrane protein which belongs to the bestrophin family of anion channels. It is predominantly expressed in the basolateral membrane of the retinal pigment epithelium. Studies show that bestrophin 1 functions as a Ca(2+)-dependent Cl(-) channel and modulator of voltage-dependent L-type Ca(2+) channels. It may also contribute to the basolateral cell conductance in airway epithelial cells. This protein is encoded by the VMD2 gene. Mutations in VMD2 can lead to different types of retinal or macular degenerations, including Best vitelliform macular dystrophy (BMD), autosomal recessive bestrophinopathy (ARB), autosomal dominant vitreoretinopathopathy (ADVIRC) and adult-onset vitelliform macular dystrophy (AVMD).

## Storage

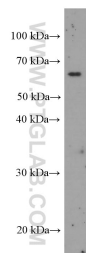
**Storage:**  
Store at -80°C.

**Storage Buffer:**  
PBS Only

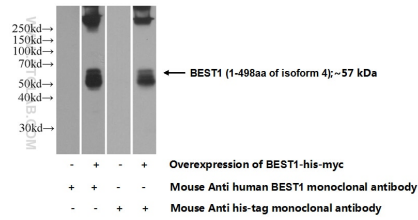
For technical support and original validation data for this product please contact:  
T: 1 (888) 4PTGLAB (1-888-478-4522) (toll free in USA), or 1(312) 455-8498 (outside USA)  
E: [proteintech@ptglab.com](mailto:proteintech@ptglab.com)  
W: [ptglab.com](http://ptglab.com)

This product is exclusively available under Proteintech Group brand and is not available to purchase from any other manufacturer.

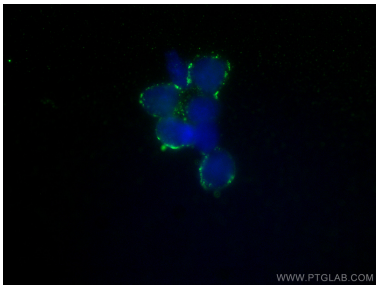
Selected Validation Data



Y79 cells were subjected to SDS PAGE followed by western blot with 60326-1-Ig (Bestrophin-1 antibody) at dilution of 1:1000 incubated at room temperature for 1.5 hours. This data was developed using the same antibody clone with 60326-1-PBS in a different storage buffer formulation.



WB result of Bestrophin-1 antibody (60326-1-Ig; 1:1000; room temperature for 1.5 hours) with negative control and Bestrophin-1 overexpressed Transfected HEK-293 cells. This data was developed using the same antibody clone with 60326-1-PBS in a different storage buffer formulation.



Immunofluorescent analysis of (4% PFA) fixed Y79 cells using Bestrophin-1 antibody (60326-1-Ig, Clone: 4D5F1 ) at dilution of 1:400 and CoraLite®488-Conjugated AffiniPure Goat Anti-Mouse IgG(H+L). This data was developed using the same antibody clone with 60326-1-PBS in a different storage buffer formulation.