

For Research Use Only

# EEF1B2 Monoclonal antibody

Catalog Number: 60329-1-Ig

Featured Product



## Basic Information

Catalog Number:

60329-1-Ig

Size:

150ul, Concentration: 1000 ug/ml by Nanodrop and 1000 ug/ml by Bradford method using BSA as the standard;

Source:

Mouse

Isotype:

IgG1

Immunogen Catalog Number:

AG0135

GenBank Accession Number:

BC000211

GeneID (NCBI):

1933

UNIPROT ID:

P24534

Full Name:

eukaryotic translation elongation factor 1 beta 2

Calculated MW:

25 kDa

Observed MW:

30-34 kDa

Purification Method:

Protein G purification

CloneNo.:

3E1C11

Recommended Dilutions:

WB 1:2000-1:10000

IHC 1:50-1:500

IF/ICC 1:50-1:500

## Applications

Tested Applications:

WB, IHC, IF/ICC, ELISA

Species Specificity:

human, mouse, rat, pig, rabbit

**Note-IHC: suggested antigen retrieval with TE buffer pH 9.0; (\*) Alternatively, antigen retrieval may be performed with citrate buffer pH 6.0**

Positive Controls:

**WB**: HeLa cells, HEK-293 cells, rabbit brain tissue, HepG2 cells, Jurkat cells, pig brain tissue, K-562 cells, HSC-T6 cells, PC-12 cells, NIH/3T3 cells, RAW 264.7 cells

**IHC**: human colon tissue,

**IF/ICC**: HeLa cells,

## Background Information

In eukaryotes, the translation elongation factor eEF1A responsible for transporting amino-acylated tRNA to the ribosome forms a higher-order complex, eEF1H, with its guanine-nucleotide-exchange factor eEF1B. eEF1B consists of three subunits: eEF1B alpha, eEF1B beta and eEF1B gamma. The eEF1B2 possess the nucleotide-exchange activity. Although several models on the basis of in vitro experiments have been proposed for the macromolecular organization of the eEF1H complex, these models differ in various aspects. The human eukaryote elongation factor 1 beta 2 (eEF1B2) migrated as a 30-34 kDa protein in SDS-PAGE.

## Storage

Storage:

Store at -20°C. Stable for one year after shipment.

Storage Buffer:

PBS with 0.02% sodium azide and 50% glycerol, pH7.3

Aliquoting is unnecessary for -20°C storage

\*\*\* 20ul sizes contain 0.1% BSA

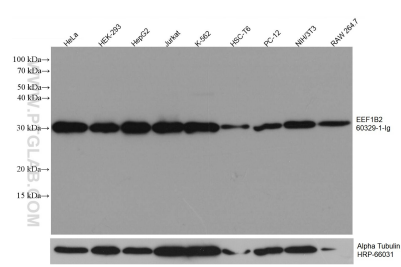
For technical support and original validation data for this product please contact:

T: 1 (888) 4PTGLAB (1-888-478-4522) (toll free in USA), or 1(312) 455-8498 (outside USA)

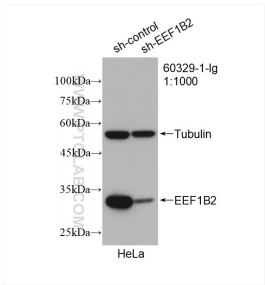
E: [proteintech@ptglab.com](mailto:proteintech@ptglab.com)  
W: [ptglab.com](http://ptglab.com)

This product is exclusively available under Proteintech Group brand and is not available to purchase from any other manufacturer.

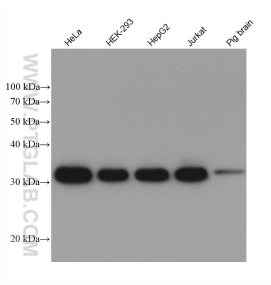
Selected Validation Data



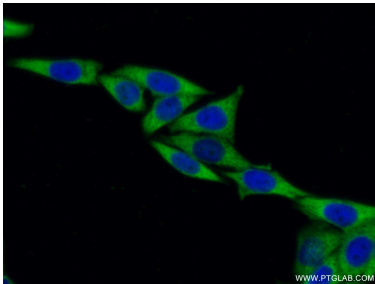
Various lysates were subjected to SDS PAGE followed by western blot with 60329-1-Ig (EEF1B2 antibody) at dilution of 1:2900 incubated at room temperature for 1.5 hours.



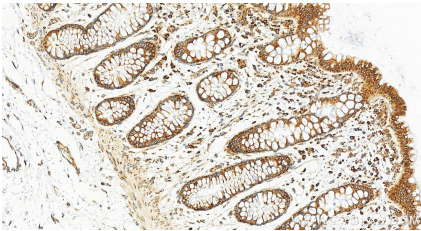
WB result of EEF1B2 antibody (60329-1-Ig; 1:1000; incubated at room temperature for 1.5 hours) with sh-Control and sh-EEF1B2 transfected HeLa cells.



Various lysates were subjected to SDS PAGE followed by western blot with 60329-1-Ig (EEF1B2 antibody) at dilution of 1:10000 incubated at room temperature for 1.5 hours.



Immunofluorescent analysis of (-20°C Ethanol ) fixed HeLa cells using 60329-1-Ig(EEF1B2 antibody) at dilution of 1:100 and Alexa Fluor 488-conjugated AffiniPure Goat Anti-Mouse IgG(H+L).



Immunohistochemical analysis of paraffin-embedded human colon tissue slide using 60329-1-Ig (EEF1B2 antibody) at dilution of 1:200 (under 20x lens). Heat mediated antigen retrieval with Tris-EDTA buffer (pH 9.0).