

For Research Use Only

# Vimentin Monoclonal antibody, PBS Only (Detector)



Catalog Number: 60330-1-PBS

Featured Product

## Basic Information

<b>Catalog Number:</b> 60330-1-PBS	<b>GenBank Accession Number:</b> BC000163	<b>Purification Method:</b> Protein A purification
<b>Size:</b> 100ug , Concentration: 1mg/ml by Nanodrop;	<b>GeneID (NCBI):</b> 7431	<b>CloneNo.:</b> 3H9D1
<b>Source:</b> Mouse	<b>ENSEMBL Gene ID:</b> ENSG00000026025	
<b>Isotype:</b> IgG1	<b>UNIPROT ID:</b> P08670	
<b>Immunogen Catalog Number:</b> AG0489	<b>Full Name:</b> vimentin	
	<b>Calculated MW:</b> 466 aa, 54 kDa	
	<b>Observed MW:</b> 55-60 kDa	

## Applications

**Tested Applications:**  
WB, IF, FC, IHC, Indirect ELISA, Cytometric bead array

**Species Specificity:**  
human, mouse, rat

## Product Information

60330-1-PBS targets Vimentin as part of a matched antibody pair:

MP50158-1: 60330-2-PBS capture and 60330-1-PBS detection (validated in Cytometric bead array, Sandwich ELISA)

Unconjugated mouse monoclonal antibody pair in PBS only (BSA and azide free) storage buffer at a concentration of 1 mg/mL, ready for conjugation.

This conjugation ready format makes antibodies ideal for use in many applications including: ELISAs, multiplex assays requiring matched pairs, mass cytometry, and multiplex imaging applications. Antibody use should be optimized by the end user for each application and assay.

## Background Information

Vimentin, also named as VIM, belongs to the intermediate filament family. Vimentin is class-III intermediate filaments found in various non-epithelial cells, especially mesenchymal cells. Vimentin is important for stabilizing the architecture of the cytoplasm. Monocyte-derived macrophages secrete vimentin into the extracellular space in vitro. Secretion of vimentin was enhanced by the proinflammatory cytokine tumor necrosis factor-alpha (TNFA; 191160) and inhibited by the antiinflammatory cytokine IL10 (124092), suggesting that vimentin is involved in the immune response. Vimentin has specialized functions that contribute to specific dynamic cellular processes. As a phosphoprotein, 55-60 kDa of vimentin proteins can be observed due to the different phosphorylation level.

## Storage

**Storage:**  
Store at -20°C. Stable for one year after shipment.

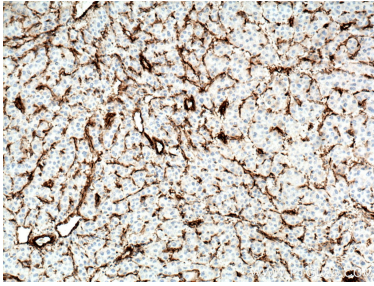
**Storage Buffer:**  
PBS only

Aliquoting is unnecessary for -20°C storage

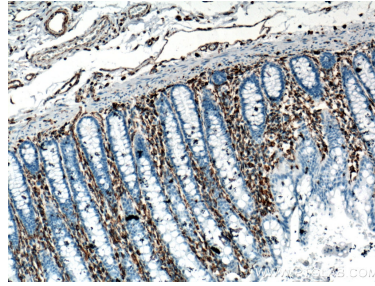
For technical support and original validation data for this product please contact:  
T: 1 (888) 4PTGLAB (1-888-478-4522) (toll free in USA), or 1(312) 455-8498 (outside USA)  
E: proteintech@ptglab.com  
W: ptglab.com

This product is exclusively available under Proteintech Group brand and is not available to purchase from any other manufacturer.

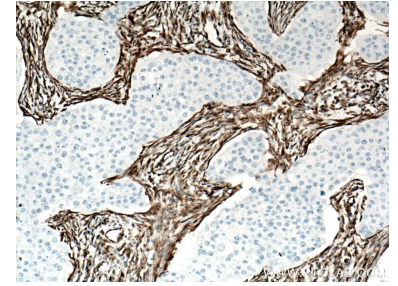
## Selected Validation Data



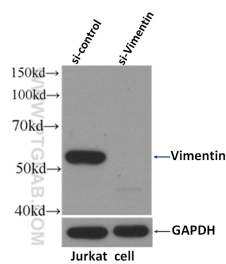
Immunohistochemical analysis of paraffin-embedded human liver cancer tissue slide using 60330-1-Ig (Vimentin antibody) at dilution of 1:6400 (under 10x lens. Heat mediated antigen retrieval with Tris-EDTA buffer (pH 9.0). This data was developed using the same antibody clone with 60330-1-PBS in a different storage buffer formulation.



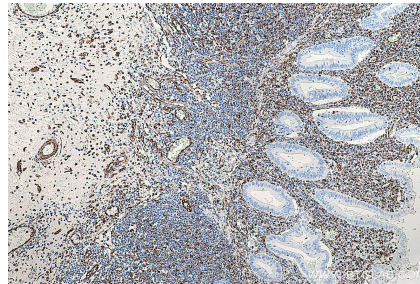
Immunohistochemical analysis of paraffin-embedded human colon tissue slide using 60330-1-Ig (Vimentin antibody) at dilution of 1:102400 (under 10x lens. Heat mediated antigen retrieval with Tris-EDTA buffer (pH 9.0). This data was developed using the same antibody clone with 60330-1-PBS in a different storage buffer formulation.



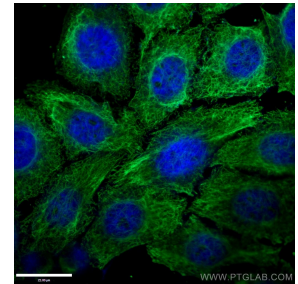
Immunohistochemical analysis of paraffin-embedded human breast cancer tissue slide using 60330-1-Ig (Vimentin antibody) at dilution of 1:8000 (under 10x lens. Heat mediated antigen retrieval with Tris-EDTA buffer (pH 9.0). This data was developed using the same antibody clone with 60330-1-PBS in a different storage buffer formulation.



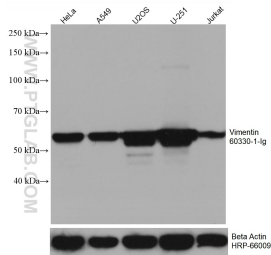
WB result of Vimentin antibody (60330-1-Ig, 1:4000) with si-Control and si-Vimentin transfected Jurkat cells. This data was developed using the same antibody clone with 60330-1-PBS in a different storage buffer formulation.



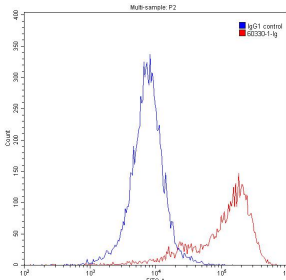
Immunohistochemical analysis of paraffin-embedded human appendicitis tissue slide using 60330-1-Ig (Vimentin antibody) at dilution of 1:8000 (under 10x lens). Heat mediated antigen retrieval with Tris-EDTA buffer (pH 9.0). This data was developed using the same antibody clone with 60330-1-PBS in a different storage buffer formulation.



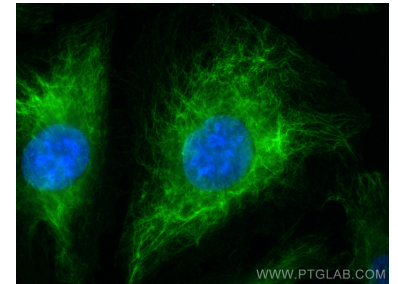
Immunofluorescent analysis of (-20°C Ethanol) fixed HepG2 cells using 60330-1-Ig (Vimentin antibody) at dilution of 1:100 and Alexa Fluor 488-Conjugated AffiniPure Goat Anti-Mouse IgG(H+L). This data was developed using the same antibody clone with 60330-1-PBS in a different storage buffer formulation.



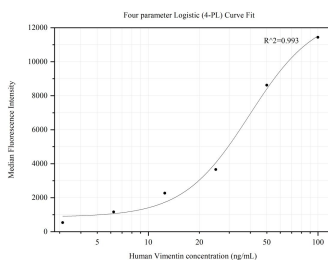
Various lysates were subjected to SDS PAGE followed by western blot with 60330-1-Ig (Vimentin antibody) at dilution of 1:50000 incubated at room temperature for 1.5 hours. The membrane was stripped and reblotted with HRP-conjugated Beta Actin Monoclonal antibody (HRP-66009) as loading control. This data was developed using the same antibody clone with 60330-1-PBS in a different storage buffer formulation.



1X10<sup>6</sup> Jurkat cells were stained with 0.2 ug Anti-Human Vimentin (60330-1-Ig, Clone:3H9D1) and CoraLite488-Conjugated AffiniPure Goat Anti-Mouse IgG(H+L) at dilution 1:1500 (red), or stained with 0.2 ug isotype control and CoraLite488-Conjugated AffiniPure Goat Anti-Mouse IgG(H+L) at dilution 1:1500 (blue). Cells were fixed with 90% MeOH. This data was developed using the same antibody clone with 60330-1-PBS in a different storage buffer formulation.



Immunofluorescent analysis of (-20°C Methanol) fixed HUVEC cells using Vimentin antibody (60330-1-Ig, Clone: 3H9D1) at dilution of 1:1000 and CoraLite@488-Conjugated AffiniPure Goat Anti-Mouse IgG(H+L). This data was developed using the same antibody clone with 60330-1-PBS in a different storage buffer formulation.



Cytometric bead array standard curve of MP50158-1, Vimentin Monoclonal Matched Antibody Pair, PBS Only. Capture antibody: 60330-2-PBS. Detection antibody: 60330-1-PBS. Standard: ag0489. Range: 3.125-100 ng/mL