

For Research Use Only

TMEM106B Monoclonal antibody, PBS Only (Capture)

Catalog Number: 60333-2-PBS



Basic Information

Catalog Number: 60333-2-PBS	GenBank Accession Number: BC033901	Purification Method: Protein A purification
Size: 100ug , Concentration: 1 mg/ml by Nanodrop;	GeneID (NCBI): 54664	CloneNo.: 4F3E9
Source: Mouse	UNIPROT ID: Q9NUM4	
Isotype: IgG1	Full Name: transmembrane protein 106B	
Immunogen Catalog Number: AG21448	Calculated MW: 31 kDa	

Applications

Tested Applications:
Cytometric bead array, Sandwich ELISA, Indirect ELISA, Sample test

Species Specificity:
human

Product Information

60333-2-PBS targets TMEM106B as part of a matched antibody pair:

MP50326-1: 60333-2-PBS capture and 60333-3-PBS detection (validated in Cytometric bead array, Sandwich ELISA)

MP50326-3: 60333-2-PBS capture and 60333-6-PBS detection (validated in Cytometric bead array)

Unconjugated mouse monoclonal antibody pair in PBS only (BSA and azide free) storage buffer at a concentration of 1 mg/mL, ready for conjugation.

This conjugation ready format makes antibodies ideal for use in many applications including: ELISAs, multiplex assays requiring matched pairs, mass cytometry, and multiplex imaging applications. Antibody use should be optimized by the end user for each application and assay.

Storage

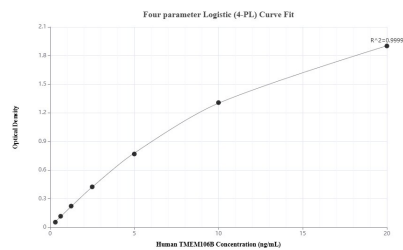
Storage:
Store at -80°C.

Storage Buffer:
PBS Only

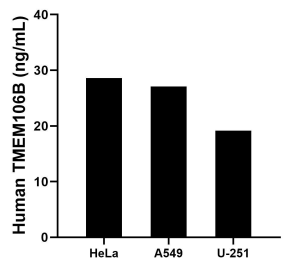
For technical support and original validation data for this product please contact:
T: 1 (888) 4PTGLAB (1-888-478-4522) (toll free in USA), or 1(312) 455-8498 (outside USA)
E: proteintech@ptglab.com
W: ptglab.com

This product is exclusively available under Proteintech Group brand and is not available to purchase from any other manufacturer.

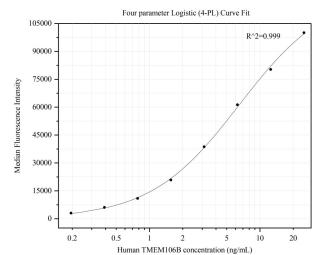
Selected Validation Data



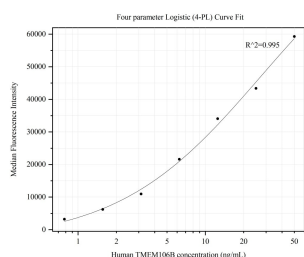
Sandwich ELISA standard curve of MP50326-1, Human TMEM106B Monoclonal Matched Antibody Pair - PBS only. 60333-2-PBS was coated to a plate as the capture antibody and incubated with serial dilutions of standard Ag21448. 60333-3-PBS was HRP conjugated as the detection antibody. Range: 0.313-20 ng/mL



The mean TMEM106B concentration was determined to be 28.61 ng/mL in HeLa cell extract based on a 2.1 mg/mL extract load, 27.06 ng/mL in A549 cell extract based on a 1.5 mg/mL extract load and 19.17 ng/mL in U-251 cell extract based on a 1.4 mg/mL extract load.



Cytometric bead array standard curve of MP50326-1, TMEM106B Monoclonal Matched Antibody Pair, PBS Only. Capture antibody: 60333-2-PBS. Detection antibody: 60333-3-PBS. Standard:Ag21448. Range: 0.195-25 ng/mL



Cytometric bead array standard curve of MP50326-3, TMEM106B Monoclonal Matched Antibody Pair, PBS Only. Capture antibody: 60333-2-PBS. Detection antibody: 60333-6-PBS. Standard:Ag21448. Range: 0.781-50 ng/mL