

For Research Use Only

# E-cadherin Monoclonal antibody

Catalog Number: 60335-1-Ig

Featured Product

159 Publications



## Basic Information

<b>Catalog Number:</b> 60335-1-Ig	<b>GenBank Accession Number:</b> BC141838	<b>Purification Method:</b> Protein A purification
<b>Size:</b> 150ul, Concentration: 1700 µg/ml by 999 Nanodrop and 1000 µg/ml by Bradford method using BSA as the standard;	<b>GeneID (NCBI):</b> UNIPROT ID: P12830	<b>CloneNo.:</b> 6B11F11
<b>Source:</b> Mouse	<b>Full Name:</b> cadherin 1, type 1, E-cadherin (epithelial)	<b>Recommended Dilutions:</b> WB 1:2000-1:8000 IHC 1:1000-1:4000 IF 1:200-1:800
<b>Isotype:</b> IgG2b	<b>Calculated MW:</b> 882 aa, 97 kDa	
<b>Immunogen Catalog Number:</b> AG15085	<b>Observed MW:</b> 120 kDa	

## Applications

**Tested Applications:**  
WB, IF, FC, IHC, ELISA

**Cited Applications:**  
WB, IF, FC, IHC

**Species Specificity:**  
human, pig, rat

**Cited Species:**  
human, rat, monkey, pig

**Note-IHC: suggested antigen retrieval with TE buffer pH 9.0; (\*) Alternatively, antigen retrieval may be performed with citrate buffer pH 6.0**

**Positive Controls:**

**WB:** PC-3 cells, A431 cells, MCF-7 cells, pig brain tissue, MKN-45 cells, SGC-7901 cells

**IHC:** human breast cancer tissue, rat stomach tissue, human colon tissue, rat colon tissue

**IF:** human breast cancer tissue, human kidney tissue, MCF-7 cells

## Background Information

Cadherins are a family of transmembrane glycoproteins that mediate calcium-dependent cell-cell adhesion and play an important role in the maintenance of normal tissue architecture. E-cadherin (epithelial cadherin), also known as CDH1 (cadherin 1) or CAM 120/80, is a classical member of the cadherin superfamily which also include N-, P-, R-, and B-cadherins. It has been regarded as a marker for spermatogonial stem cells in mice (PMID:23509752). E-cadherin is expressed on the cell surface in most epithelial tissues. The extracellular region of E-cadherin establishes calcium-dependent homophilic trans binding, providing specific interaction with adjacent cells, while the cytoplasmic domain is connected to the actin cytoskeleton through the interaction with p120-,  $\alpha$ -,  $\beta$ -, and  $\gamma$ -catenin (plakoglobin). E-cadherin is important in the maintenance of the epithelial integrity, and is involved in mechanisms regulating proliferation, differentiation, and survival of epithelial cell. E-cadherin may also play a role in tumorigenesis. It is considered to be an invasion suppressor protein and its loss is an indicator of high tumor aggressiveness.

## Notable Publications

Author	Pubmed ID	Journal	Application
Wenjing Guo	33117682	Front Oncol	WB
Hui-Fang Wang	28970011	Eur J Pharmacol	WB,IF
Wei Li	34603446	J Oncol	WB

## Storage

**Storage:**

Store at -20°C. Stable for one year after shipment.

**Storage Buffer:**

PBS with 0.02% sodium azide and 50% glycerol pH 7.3.

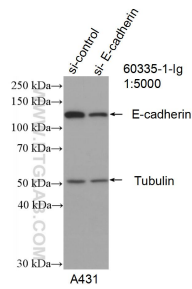
Aliquoting is unnecessary for -20°C storage

\*\*\* 20ul sizes contain 0.1% BSA

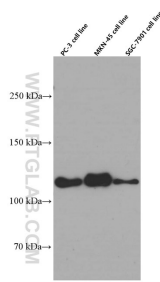
For technical support and original validation data for this product please contact:  
T: 1 (888) 4PTGLAB (1-888-478-4522) (toll free in USA), or 1(312) 455-8498 (outside USA)  
E: proteintech@ptglab.com  
W: ptglab.com

This product is exclusively available under Proteintech Group brand and is not available to purchase from any other manufacturer.

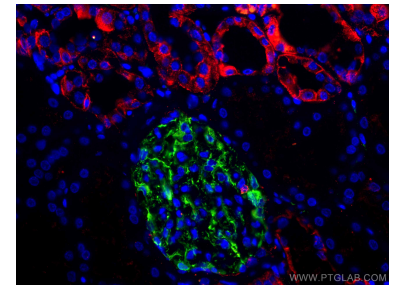
## Selected Validation Data



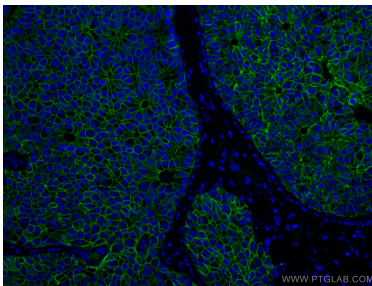
WB result of E-cadherin antibody (60335-1-Ig; 1:5000; incubated at room temperature for 1.5 hours) with sh-Control and sh-E-cadherin transfected A431 cells.



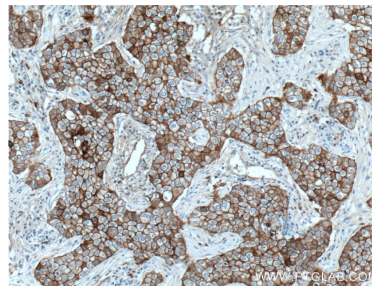
PC-3, MKN-45, SGC-7901 cells were subjected to SDS PAGE followed by western blot with 60335-1-Ig (E-cadherin Antibody) at dilution of 1:4000 incubated at room temperature for 1.5 hours.



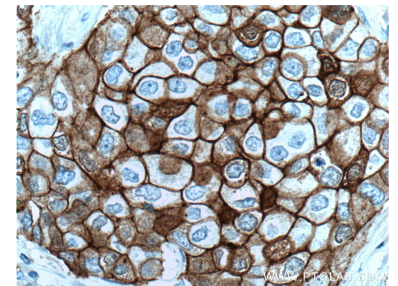
Immunofluorescent analysis of (4% PFA) fixed human kidney tissue using E-cadherin antibody (60335-1-Ig, Clone: 6B11F11) at dilution of 1:300 and CoraLite@594-Conjugated AffiniPure Goat Anti-Mouse IgG(H+L), (18150-1-AP, green). DNA was stained by DAPI (blue).



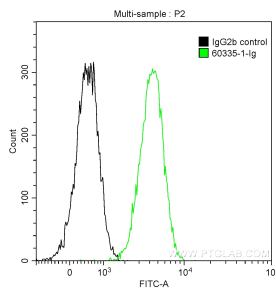
Immunofluorescent analysis of (4% PFA) fixed human breast cancer tissue using E-cadherin antibody (60335-1-Ig, Clone: 6B11F11) at dilution of 1:400 and CoraLite@488-Conjugated AffiniPure Goat Anti-Mouse IgG(H+L).



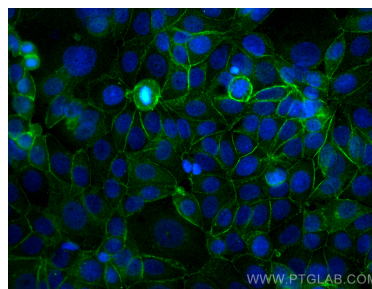
Immunohistochemical analysis of paraffin-embedded human breast cancer tissue slide using 60335-1-Ig (E-cadherin antibody) at dilution of 1:2000 (under 10x lens. Heat mediated antigen retrieval with Tris-EDTA buffer (pH 9.0).



Immunohistochemical analysis of paraffin-embedded human breast cancer tissue slide using 60335-1-Ig (E-cadherin antibody) at dilution of 1:2000 (under 40x lens. Heat mediated antigen retrieval with Tris-EDTA buffer (pH 9.0).



$1 \times 10^6$  A431 cells were stained with 0.2 ug Anti-Human E-cadherin (60335-1-Ig, Clone:6B11F11) and CoraLite@488-Conjugated AffiniPure Goat Anti-Mouse IgG(H+L) at dilution 1:1000 (green), or stained with 0.2 ug isotype control antibody and CoraLite@488-Conjugated AffiniPure Goat Anti-Mouse IgG(H+L) at dilution 1:1000 (black). Cells were fixed with 90% MeOH.



Immunofluorescent analysis of (-20°C Methanol) fixed MCF-7 cells using E-cadherin antibody (60335-1-Ig, Clone: 6B11F11) at dilution of 1:400 and CoraLite@488-Conjugated AffiniPure Goat Anti-Mouse IgG(H+L).