

KLK3/PSA Monoclonal antibody

Catalog Number: 60338-1-Ig **6 Publications**

Basic Information

Catalog Number: 60338-1-Ig	GenBank Accession Number: BC005307	Purification Method: Protein A purification
Size: 150ul , Concentration: 1600 ug/ml by Nanodrop and 860 ug/ml by Bradford method using BSA as the standard;	GeneID (NCBI): 354	CloneNo.: 4A1E2
Source: Mouse	UNIPROT ID: P07288	Recommended Dilutions: WB 1:1000-1:4000 IHC 1:5000-1:20000
Isotype: IgG1	Full Name: kallikrein-related peptidase 3	
Immunogen Catalog Number: AG1060	Calculated MW: 29 kDa	
	Observed MW: 30-34 kDa	

Applications

Tested Applications: WB, IHC, ELISA	Positive Controls:
Cited Applications: WB	WB : LNCaP cells,
Species Specificity: human	IHC : human prostate cancer tissue,
Cited Species: human	
Note-IHC: suggested antigen retrieval with TE buffer pH 9.0; (*) Alternatively, antigen retrieval may be performed with citrate buffer pH 6.0	

Background Information

Kallikreins are a subgroup of serine proteases having diverse physiological functions. Growing evidence suggests that many kallikreins are implicated in carcinogenesis and some have potential as novel cancer and other disease biomarkers. kallikrein-related peptidase 3, which is also called PSA (prostate-specific antigen) in the clinical setting, is useful in the diagnosis and monitoring of prostatic carcinoma. KLK3 has 5 isoforms produced by alternative splicing.

Notable Publications

Author	Pubmed ID	Journal	Application
Rong Wang	35853851	Cell Death Dis	WB
Bingbing Zhao	37408134	ACS Appl Mater Interfaces	WB
Yalcin Erzurumlu	37271348	Cell Signal	WB

Storage

Storage:
Store at -20°C. Stable for one year after shipment.

Storage Buffer:
PBS with 0.02% sodium azide and 50% glycerol pH 7.3.

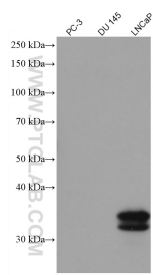
Aliquoting is unnecessary for -20°C storage

*** 20ul sizes contain 0.1% BSA

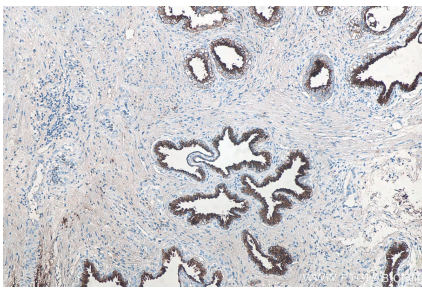
For technical support and original validation data for this product please contact:
 T: 1 (888) 4PTGLAB (1-888-478-4522) (toll free in USA), or 1(312) 455-8498 (outside USA)
 E: proteintech@ptglab.com
 W: ptglab.com

This product is exclusively available under Proteintech Group brand and is not available to purchase from any other manufacturer.

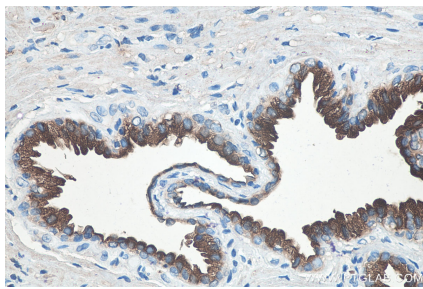
Selected Validation Data



PC-3(PSA-), DU 145(PSA-) and LNCaP (PSA+) cell lysates were subjected to SDS PAGE followed by western blot with 60338-1-Ig (KLK3/PSA antibody) at dilution of 1:1000 incubated at room temperature for 1.5 hours.



Immunohistochemical analysis of paraffin-embedded human prostate cancer tissue slide using 60338-1-Ig (KLK3/PSA antibody) at dilution of 1:10000 (under 10x lens). Heat mediated antigen retrieval with Tris-EDTA buffer (pH 9.0).



Immunohistochemical analysis of paraffin-embedded human prostate cancer tissue slide using 60338-1-Ig (KLK3/PSA antibody) at dilution of 1:10000 (under 40x lens). Heat mediated antigen retrieval with Tris-EDTA buffer (pH 9.0).