

For Research Use Only

Prostein Monoclonal antibody

Catalog Number: 60343-1-Ig



Basic Information

Catalog Number: 60343-1-Ig	GenBank Accession Number: BC050416	Purification Method: Protein A purification
Size: 150ul , Concentration: 2600 ug/ml by Nanodrop and 1467 ug/ml by Bradford method using BSA as the standard;	GeneID (NCBI): 85414	CloneNo.: 5E12E2
Source: Mouse	UNIPROT ID: Q96JT2	Recommended Dilutions: WB 1:1000-1:10000 IHC 1:500-1:2000 IF-P 1:200-1:800
Isotype: IgG2b	Full Name: solute carrier family 45, member 3	
Immunogen Catalog Number: AG5463	Calculated MW: 59 kDa	
	Observed MW: 55-59 kDa	

Applications

Tested Applications: WB, IHC, IF-P, ELISA	Positive Controls:
Species Specificity: human, mouse, rat	WB : rat testis tissue, DU 145 cells, JAR cells, mouse testis tissue
Note-IHC: suggested antigen retrieval with TE buffer pH 9.0; (*) Alternatively, antigen retrieval may be performed with citrate buffer pH 6.0	IHC : human prostate cancer tissue,
	IF-P : human prostate cancer tissue,

Background Information

Prostein is a prostate tissue-specific protein whose expression is highly restricted to normal and cancerous prostate tissues. Anti-prostein is useful for the identification of prostate adenocarcinomas and is a good marker to identify prostatic origin in metastatic cancer.

Storage

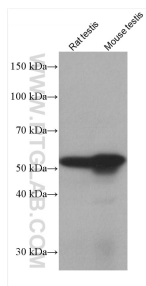
Storage:
Store at -20°C. Stable for one year after shipment.
Storage Buffer:
PBS with 0.02% sodium azide and 50% glycerol pH 7.3.
Aliquoting is unnecessary for -20°C storage

*** 20ul sizes contain 0.1% BSA

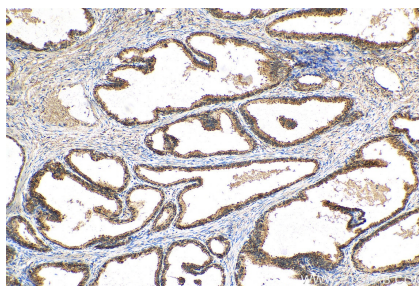
For technical support and original validation data for this product please contact:
T: 1 (888) 4PTGLAB (1-888-478-4522) (toll free in USA), or 1(312) 455-8498 (outside USA)
E: proteintech@ptglab.com
W: ptglab.com

This product is exclusively available under Proteintech Group brand and is not available to purchase from any other manufacturer.

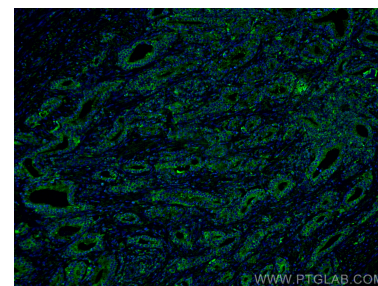
Selected Validation Data



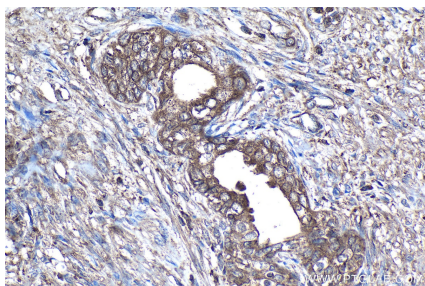
Various lysates were subjected to SDS PAGE followed by western blot with 60343-1-Ig (Prostein antibody) at dilution of 1:10000 incubated at room temperature for 1.5 hours.



Immunohistochemical analysis of paraffin-embedded human prostate cancer tissue slide using 60343-1-Ig (Prostein antibody) at dilution of 1:1000 (under 10x lens). Heat mediated antigen retrieval with Tris-EDTA buffer (pH 9.0).



Immunofluorescent analysis of (4% PFA) fixed human prostate cancer tissue using Prostein antibody (60343-1-Ig, Clone: 5E12E2) at dilution of 1:400 and CoraLite®488-Conjugated AffiniPure Goat Anti-Mouse IgG(H+L).



Immunohistochemical analysis of paraffin-embedded human prostate cancer tissue slide using 60343-1-Ig (Prostein antibody) at dilution of 1:2000 (under 40x lens). Heat mediated antigen retrieval with Tris-EDTA buffer (pH 9.0).