

For Research Use Only

LIN28 Monoclonal antibody, PBS Only



Catalog Number: 60344-1-PBS

Basic Information

Catalog Number: 60344-1-PBS	GenBank Accession Number: BC028566	Purification Method: Protein G purification
Size: 100ug , Concentration: 1 mg/ml by Nanodrop;	GeneID (NCBI): 79727	CloneNo.: 4F5G6
Source: Mouse	UNIPROT ID: Q9H9Z2	
Isotype: IgG1	Full Name: lin-28 homolog (C. elegans)	
Immunogen Catalog Number: AG2312	Calculated MW: 209 aa, 23 kDa	
	Observed MW: 28 kDa	

Applications

Tested Applications:
WB, IF, IHC, Indirect ELISA

Species Specificity:
human

Background Information

LIN28 is one of the four key human factors (OCT4, SOX2, NANOG and LIN28) used to reprogram human fibroblasts to an embryonic stem (ES) cell-like state known as the induced pluripotent stem (Ips) cell. Lin28 is a marker of undifferentiated human embryonic stem cells and a cytoplasmic Mrna-binding protein that binds to and enhances the translation of the IGF2 Mrna. LIN28 has also been shown to bind to the let-7 pre-miRNA and block production of the mature let-7 microRNA in mouse embryonic stem cells. The calculated molecular weight of LIN28 is 23 kDa, but the modified LIN28 is about 28 kDa.

Storage

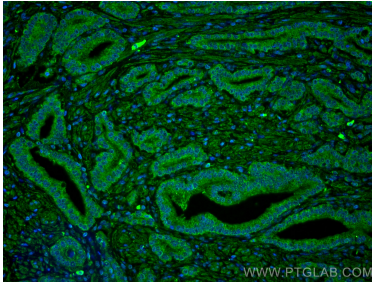
Storage:
Store at -80°C.

Storage Buffer:
PBS Only

For technical support and original validation data for this product please contact:
T: 1 (888) 4PTGLAB (1-888-478-4522) (toll free in USA), or 1(312) 455-8498 (outside USA) E: proteintech@ptglab.com
W: ptglab.com

This product is exclusively available under Proteintech Group brand and is not available to purchase from any other manufacturer.

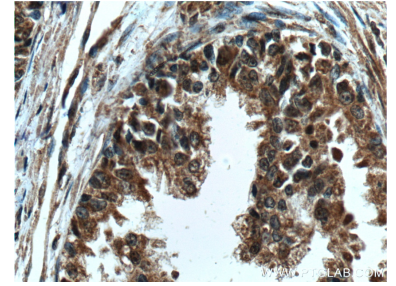
Selected Validation Data



Immunofluorescent analysis of (4% PFA) fixed human prostate cancer tissue using LIN28 antibody (60344-1-Ig, Clone: 4F5G6) at dilution of 1:400 and CoraLite@488-Conjugated AffiniPure Goat Anti-Mouse IgG(H+L). This data was developed using the same antibody clone with 60344-1-PBS in a different storage buffer formulation.



NCCIT cell were subjected to SDS PAGE followed by western blot with 60344-1-Ig (LIN28 antibody) at dilution of 1:1000 incubated at room temperature for 1.5 hours. This data was developed using the same antibody clone with 60344-1-PBS in a different storage buffer formulation.



Immunohistochemical analysis of paraffin-embedded human prostate cancer tissue slide using 60344-1-Ig (LIN28 Antibody) at dilution of 1:200 (under 40x lens). Heat mediated antigen retrieval with Tris-EDTA buffer (pH 9.0). This data was developed using the same antibody clone with 60344-1-PBS in a different storage buffer formulation.