

For Research Use Only

NR1H2 Monoclonal antibody

Catalog Number: 60345-1-Ig

Featured Product

12 Publications



Basic Information

Catalog Number:

60345-1-Ig

Size:

150ul, Concentration: 1100 ug/ml by Nanodrop and 1000 ug/ml by Bradford method using BSA as the standard;

Source:

Mouse

Isotype:

IgG1

Immunogen Catalog Number:

AG5635

GenBank Accession Number:

BC047750

GeneID (NCBI):

7376

UNIPROT ID:

P55055

Full Name:

nuclear receptor subfamily 1, group H, member 2

Calculated MW:

51 kDa

Observed MW:

51 kDa

Purification Method:

Protein G purification

CloneNo.:

1E12B10

Recommended Dilutions:

WB 1:500-1:2000

Applications

Tested Applications:

WB, ELISA

Cited Applications:

WB, IHC, ChIP

Species Specificity:

human, pig

Cited Species:

human, mouse

Positive Controls:

WB : human liver tissue, pig liver tissue

Background Information

NR1H2, also known as LXRB, is a liver X receptors, which form a subfamily of the nuclear receptor superfamily and are key regulators of macrophage function, controlling transcriptional programs involved in lipid homeostasis and inflammation. It preferentially bind to double-stranded oligonucleotide direct repeats, which have the consensus half-site sequence 5'-AGGTCA-3' and 4-nt spacing (DR-4). It involves in the regulation of cholesterol uptake through MYLIP-dependent ubiquitination of LDLR, VLDLR and LRP8.

Notable Publications

Author	Pubmed ID	Journal	Application
Dan Zhao	32963108	J Biol Chem	WB
Fenghua Guo	30224060	Biochem Biophys Res Commun	WB
Ying Liu	30309895	J Lipid Res	WB

Storage

Storage:

Store at -20°C. Stable for one year after shipment.

Storage Buffer:

PBS with 0.02% sodium azide and 50% glycerol, pH7.3

Aliquoting is unnecessary for -20°C storage

*** 20ul sizes contain 0.1% BSA

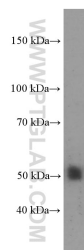
For technical support and original validation data for this product please contact:

T: 1 (888) 4PTGLAB (1-888-478-4522) (toll free in USA), or 1(312) 455-8498 (outside USA)

E: proteintech@ptglab.com
W: ptglab.com

This product is exclusively available under Proteintech Group brand and is not available to purchase from any other manufacturer.

Selected Validation Data



human liver tissue were subjected to SDS PAGE followed by western blot with 60345-1-Ig (NR1H2 Antibody) at dilution of 1:1000 incubated at room temperature for 1.5 hours.