

For Research Use Only

Gastrin Monoclonal antibody

Catalog Number: 60346-1-Ig **2 Publications**



Basic Information

Catalog Number: 60346-1-Ig	GenBank Accession Number: BC069724	Purification Method: Protein A purification
Size: 150ul , Concentration: 1978 ug/ml by 2520 Nanodrop and 1000 ug/ml by Bradford method using BSA as the standard;	GeneID (NCBI): 2520	CloneNo.: 7G9C3
Source: Mouse	UNIPROT ID: P01350	Recommended Dilutions: IHC 1:100-1:500 IF-P 1:200-1:800
Isotype: IgG2a	Full Name: gastrin	
Immunogen Catalog Number: AG12795	Calculated MW: 101 aa, 11 kDa	

Applications

Tested Applications: IHC, IF-P, ELISA	Positive Controls:
Cited Applications: IHC, IF	IHC : human stomach tissue,
Species Specificity: human	IF-P : human stomach cancer tissue,
Cited Species: human	
Note-IHC: suggested antigen retrieval with TE buffer pH 9.0; (*) Alternatively, antigen retrieval may be performed with citrate buffer pH 6.0	

Background Information

Gastrin is a hormone produced primarily by G-cells in the stomach, where it functions to stimulate acid secretion by gastric parietal cells. Gastrin is a promiscuous hormone. Thus, the gastrin gene is expressed in common cancers such as bronchogenic, colorectal, ovarian and pancreatic carcinomas.

Notable Publications

Author	Pubmed ID	Journal	Application
Joep Beumer	32407674	Cell	IF
Hirofumi Rokutan	38922356	Virchows Arch	IHC

Storage

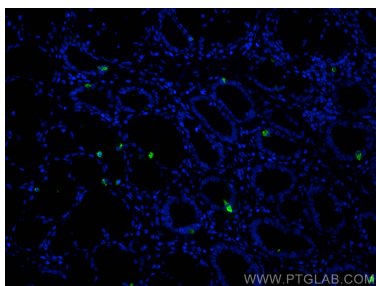
Storage:
Store at -20°C. Stable for one year after shipment.
Storage Buffer:
PBS with 0.02% sodium azide and 50% glycerol pH 7.3.
Aliquoting is unnecessary for -20°C storage

*** 20ul sizes contain 0.1% BSA

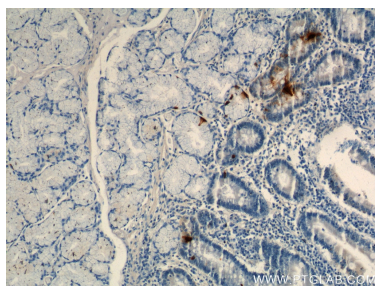
For technical support and original validation data for this product please contact:
T: 1 (888) 4PTGLAB (1-888-478-4522) (toll free in USA), or 1(312) 455-8498 (outside USA)
E: proteintech@ptglab.com
W: ptglab.com

This product is exclusively available under Proteintech Group brand and is not available to purchase from any other manufacturer.

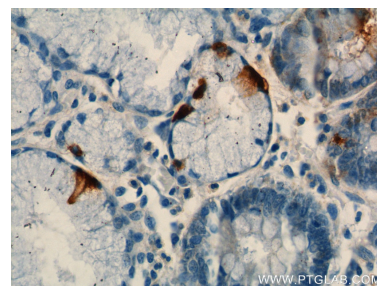
Selected Validation Data



Immunofluorescent analysis of (4% PFA) fixed paraffin-embedded human stomach cancer tissue using Gastrin antibody (60346-1-Ig, Clone: 7G9C3) at dilution of 1:400 and CoraLite®488-Conjugated AffiniPure Goat Anti-Mouse IgG(H+L) (SA00013-1). Heat mediated antigen retrieval with Tris-EDTA buffer (pH 9.0).



Immunohistochemical analysis of paraffin-embedded human stomach tissue slide using 60346-1-Ig (Gastrin antibody) at dilution of 1:350 (under 10x lens).



Immunohistochemical analysis of paraffin-embedded human stomach tissue slide using 60346-1-Ig (Gastrin antibody) at dilution of 1:350 (under 40x lens).