

For Research Use Only

Gastrin Monoclonal antibody, PBS Only (Capture)

Catalog Number: 60346-1-PBS



Basic Information

Catalog Number: 60346-1-PBS	GenBank Accession Number: BC069724	Purification Method: Protein A purification
Size: 100ug , Concentration: 1mg/ml by Nanodrop;	GeneID (NCBI): 2520	CloneNo.: 7G9C3
Source: Mouse	UNIPROT ID: P01350	
Isotype: IgG2a	Full Name: gastrin	
Immunogen Catalog Number: AG12795	Calculated MW: 101 aa, 11 kDa	

Applications

Tested Applications:
IHC, IF-P, Cytometric bead array, Indirect ELISA

Species Specificity:
human

Product Information

60346-1-PBS targets Gastrin as part of a matched antibody pair:

MP51244-1: 60346-1-PBS capture and 60346-2-PBS detection (validated in Cytometric bead array)

Unconjugated mouse monoclonal antibody pair in PBS only (BSA and azide free) storage buffer at a concentration of 1 mg/mL, ready for conjugation.

This conjugation ready format makes antibodies ideal for use in many applications including: ELISAs, multiplex assays requiring matched pairs, mass cytometry, and multiplex imaging applications. Antibody use should be optimized by the end user for each application and assay.

Background Information

Gastrin is a hormone produced primarily by G-cells in the stomach, where it functions to stimulate acid secretion by gastric parietal cells. Gastrin is a promiscuous hormone. Thus, the gastrin gene is expressed in common cancers such as bronchogenic, colorectal, ovarian and pancreatic carcinomas.

Storage

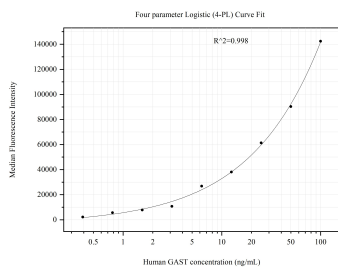
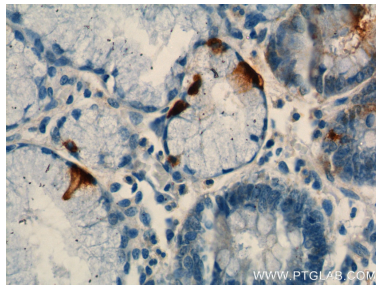
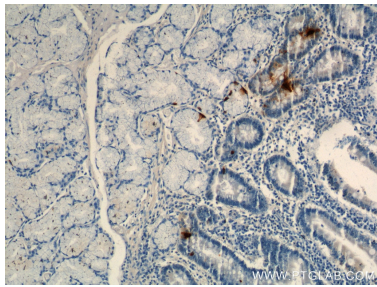
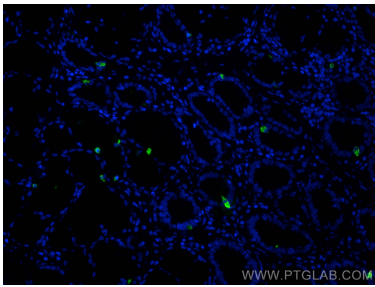
Storage:
Store at -80°C.

Storage Buffer:
PBS Only

For technical support and original validation data for this product please contact:
T: 1 (888) 4PTGLAB (1-888-478-4522) (toll free in USA), or 1(312) 455-8498 (outside USA)
E: proteintech@ptglab.com
W: ptglab.com

This product is exclusively available under Proteintech Group brand and is not available to purchase from any other manufacturer.

Selected Validation Data



Cytometric bead array standard curve of MP51244-1, GAST Monoclonal Matched Antibody Pair, PBS Only. Capture antibody: 60346-1-PBS. Detection antibody: 60346-2-PBS. Standard:Ag12795. Range: 0.391-100 ng/mL.