

# CD41/Integrin alpha 2b Monoclonal antibody, PBS Only

Catalog Number: 60350-1-PBS

## Basic Information

**Catalog Number:**

60350-1-PBS

**Size:**

100ug , Concentration: 1 mg/ml by Nanodrop;

**Source:**

Mouse

**Isotype:**

IgG1

**GenBank Accession Number:**

BC126442

**GeneID (NCBI):**

3674

**UNIPROT ID:**

P08514

**Full Name:**

integrin, alpha 2b (platelet glycoprotein IIb of IIb/IIIa complex, antigen CD41)

**Calculated MW:**

113 kDa

**Observed MW:**

125 kDa

**Purification Method:**

Protein G purification

**CloneNo.:**

6D7C5

## Applications

**Tested Applications:**

WB, Indirect ELISA

**Species Specificity:**

human

## Background Information

The integrins are a superfamily of cell adhesion receptors that bind to extracellular matrix ligands, cell-surface ligands, and soluble ligands (PMID: 17543136). They are transmembrane  $\alpha\beta$  heterodimers and at least 24 distinct integrin heterodimers are formed by the combination of 18  $\alpha$  and eight  $\beta$  known subunits (PMID: 17543136; 20029421). In addition to mediating cell adhesion, integrins also play important roles in modulating signal transduction pathways that control cellular responses including migration, proliferation, differentiation, and apoptosis (PMID:19118207). Integrin alpha-IIb (ITGA2B, CD41) is expressed on platelets, megakaryocytes and some hematopoietic progenitor cells (PMID: 11934866). This protein undergoes post-translational cleavage to yield disulfide linked light (25 kDa) and heavy (125 kDa) chains which join with integrin beta3 (CD61) to form a receptor for fibronectin, fibrinogen, plasminogen, prothrombin, thrombospondin and vitronectin. Integrin alpha-IIb/beta-3 is crucial for platelet aggregation through binding of soluble fibrinogen.

## Storage

**Storage:**

Store at -80°C.

**Storage Buffer:**

PBS Only

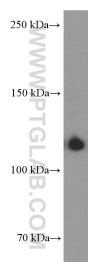
For technical support and original validation data for this product please contact:

T: 1 (888) 4PTGLAB (1-888-478-4522) (toll free in USA), or 1(312) 455-8498 (outside USA)

E: [proteintech@ptglab.com](mailto:proteintech@ptglab.com)  
W: [ptglab.com](http://ptglab.com)

This product is exclusively available under Proteintech Group brand and is not available to purchase from any other manufacturer.

## Selected Validation Data



human spleen tissue were subjected to SDS PAGE followed by western blot with 60350-1-Ig (CD41/Integrin alpha 2b Antibody) at dilution of 1:1600 incubated at room temperature for 1.5 hours. This data was developed using the same antibody clone with 60350-1-PBS in a different storage buffer formulation.